

RS SERIES ROCKER SWITCHES

General purpose rocker switches with secure voltage ratings and high in-rush current options.

- Traditional & round mounting hole options
- Compact & lightweight
- Snap-in design
- Tactile feedback/multi-function
- Illuminated & non-illuminated options

Applications

- Industrial
- Marine, Oil & Gas
- Automotive
- Automation & Controls
- Communications
- Robotics
- IoT
- Security Systems

Key Features

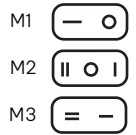
- Non-illuminated & Illuminated switch options.
- High in-rush current and voltage ratings for secure & reliable operation.
- Compact & lightweight design for easy installation.
- .187" and .250" quick connect terminal options.
- Vibration resistant secure snap-in mount design.
- Custom function mark & actuator color availability.
- ROHS & REACH compliant.
- ENEC & CQC certified.



Ordering Data

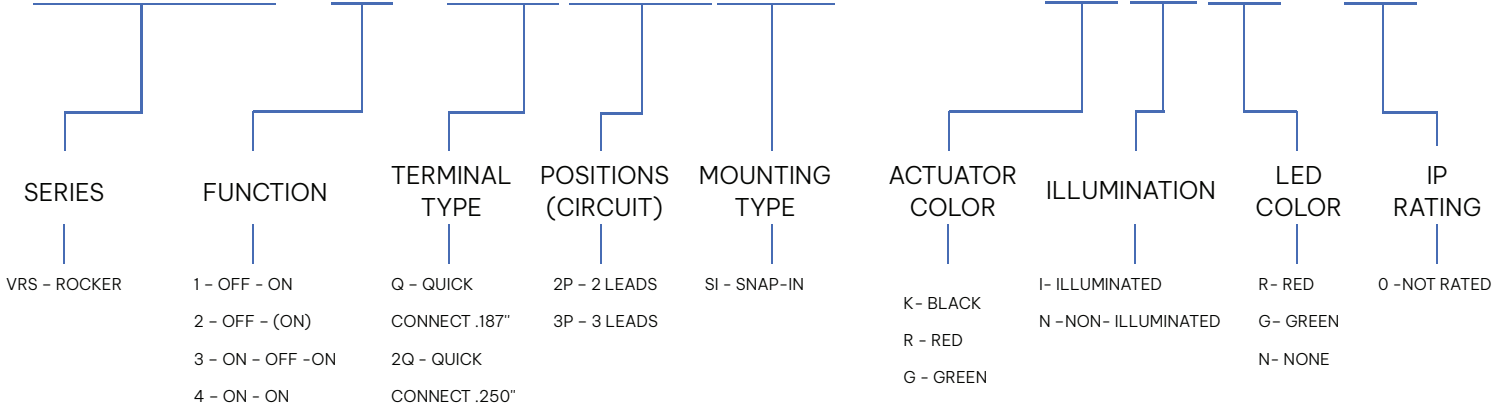
SKU Offering

SOME NUMBERS HAVE EXTRA CHARACTERS TO DENOTE SPECIAL MARKINGS OR COLOR MARKINGS.



APPROX MOUNTING HOLE SIZE

VRS - 1 - Q 2P SI - 19 K NN - 0





Mounting Hole: 12.9x19.2mm

Part Number	Function	Terminal Type	Positions	Mounting Type	Actuator Color	Illuminated	Led Color	IP Rated
VRS-1-Q2PSI-19KNN-0	Off-On	.187" QC	2P SPST	Snap-In	Black	Non-Illuminated	None	None
VRS-4-Q3PSI-19KNN-0	On-On	.187" QC	3P SPDT	Snap-In	Black	Non-Illuminated	None	None
VRS-3-Q3PSI-19KNN-0	On-Off-On	.187" QC	3P SPDT	Snap-In	Black	Non-Illuminated	None	None
VRS-1-Q2PSI-19KNN-0-M1	Off-On	.187" QC	2P SPST	Snap-In	Black	Non-Illuminated	None	None
VRS-3-Q3PSI-19KNN-0-M2	On-Off-On	.187" QC	3P SPDT	Snap-In	Red	Non-Illuminated	None	None
VRS-1-Q2PSI-19RNN-0	Off-On	.187" QC	2P SPST	Snap-In	Red	Non-Illuminated	None	None
VRS-1-Q2PSI-19RNN-0-M1	Off-On	.187" QC	2P SPST	Snap-In	Red	Non-Illuminated	None	None
VRS-3-Q3PSI-19RNN-0-M2	On-Off-On	.187" QC	3P SPDT	Snap-In	Red	Non-Illuminated	None	None
VRS-1-Q3PSI-19GIG-0	Off-On	.187" QC	3P SPST	Snap-In	Green	Illuminated	Green	None
VRS-1-Q3PSI-19RIR-0	Off-On	.187" QC	3P SPST	Snap-In	Red	Illuminated	Red	None

Mounting Hole: 13.9x28.6mm

VRS-1-Q2PSI-28KNN-0	Off-On	.187" QC	2P SPST	Snap-In	Black	Non-Illuminated	None	None
VRS-4-Q3PSI-28KNN-0	On-On	.187" QC	3P SPDT	Snap-In	Black	Non-Illuminated	None	None
VRS-1-Q2PSI-28KNN-0-M1	Off-On	.187" QC	2P SPST	Snap-In	Black	Non-Illuminated	None	None
VRS-1-Q3PSI-28RIR-0	Off-On	.187" QC	3P SPST	Snap-In	Red	Illuminated	Red	None

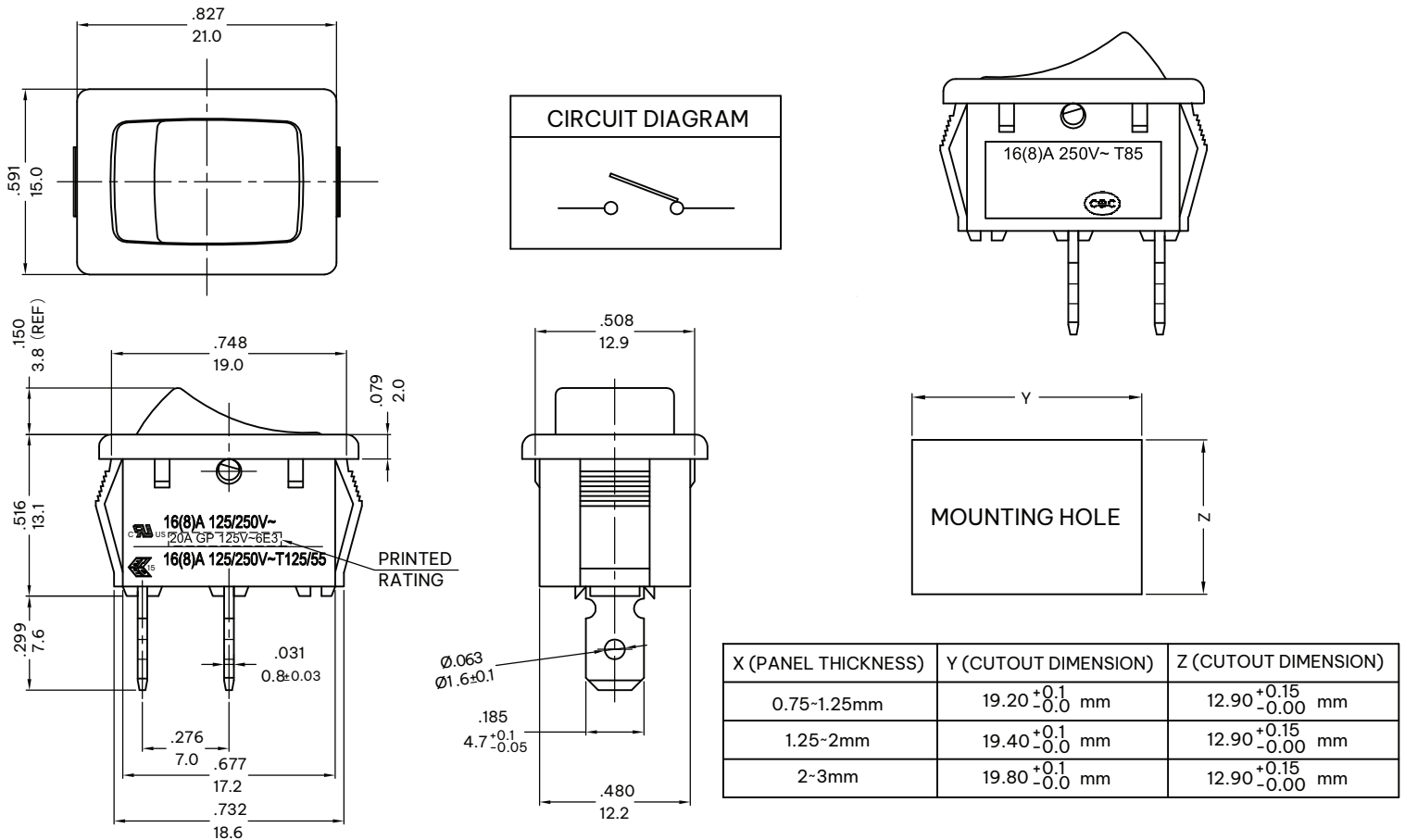
Mounting Hole: 20.2mm

VRS-1-Q2PSI-20KNN-0	Off-On	.187" QC	2P SPST	Snap-In	Black	Non-Illuminated	None	None
VRS-4-Q3PSI-20KNN-0	On-On	.187" QC	3P SPDT	Snap-In	Black	Non-Illuminated	None	None
VRS-1-Q2PSI-20KNN-0-M1	Off-On	.187" QC	2P SPST	Snap-In	Black	Non-Illuminated	None	None
VRS-4-Q3PSI-20KNN-0-M3	On-On	.187" QC	3P SPDT	Snap-In	Black	Non-Illuminated	None	None
VRS-1-2Q3PSI-20RIR-0	Off-On	.250" QC	3P SPST	Snap-In	Red	Illuminated	Red	None
VRS-1-2Q3PSI-20GIG-0	Off-On	.250" QC	3P SPST	Snap-In	Green	Illuminated	Green	None



Product Dimensions

VRS-1-Q2PSI-19KNN-0
 VRS-1-Q2PSI-19RNN-0
 VRS-1-Q2PSI-19KNN-0-M1



Notes:

1. Tolerances unless otherwise specified: $\pm .012/0.3$ (in/mm)
2. VRS-1-Q2PSI-19RNN-0-M1 is similar to VRS-1-Q2PSI-19KNN-0 but with actuator in red. See page 2.
3. VRS-1-Q2PSI-19KNN-0-M1 is similar to VRS-1-Q2PSI-19KNN-0 but with an M1 marking. See page 2.

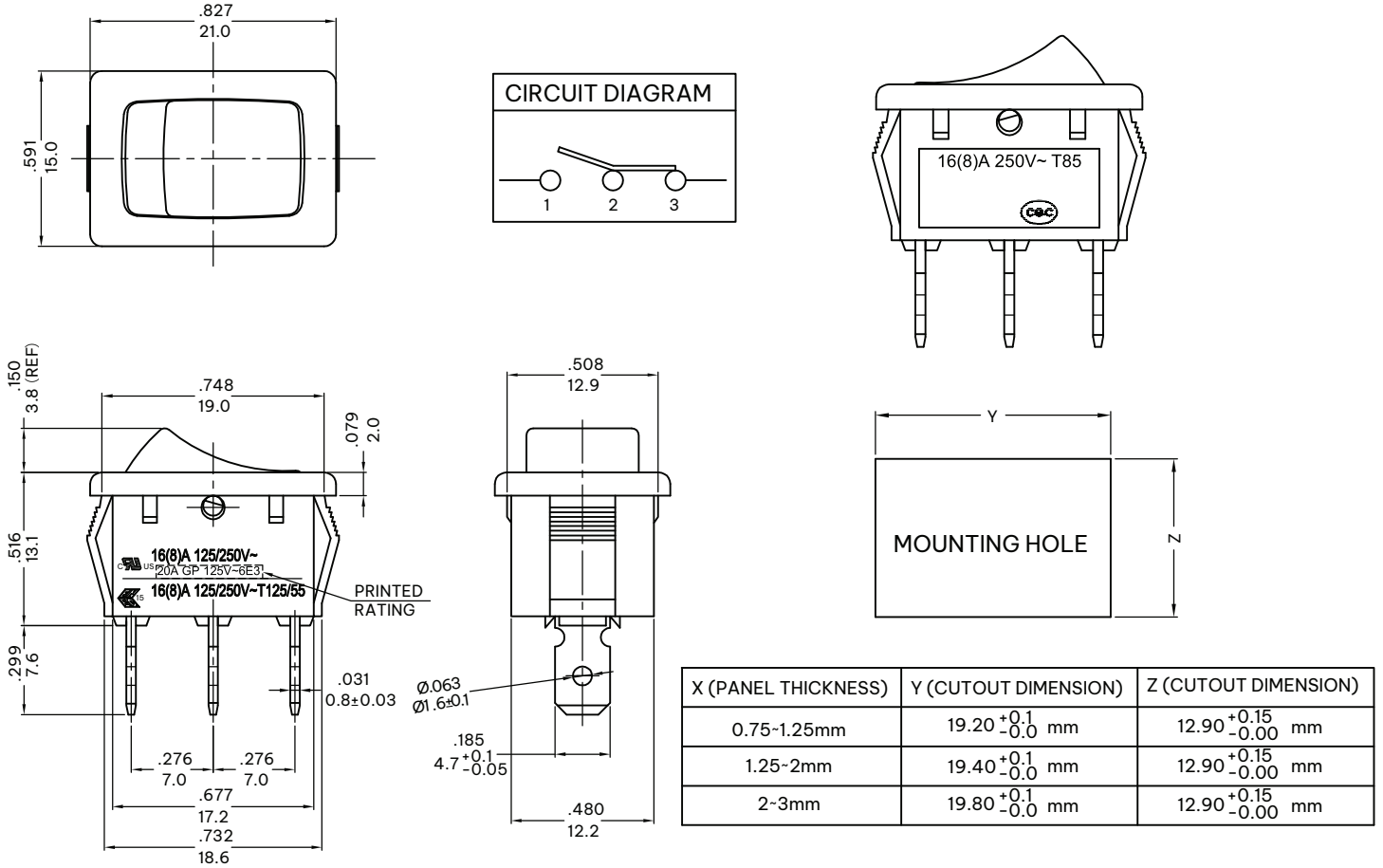
Product Specifications

Rocker Switch Specifications	
Rating:	20A 125VAC UL us
	16 (8)A 125/250V ~T55 UL us
	16 (8)A 125/250V ~T125/55 UL us
	16 (8)A 250V-T85 CBC
Switch Function:	2P OFF-ON





VRS-4-Q3PSI-19KNN-0



Note:

1. Tolerances unless otherwise specified: ± .012/0.3 (in/mm)



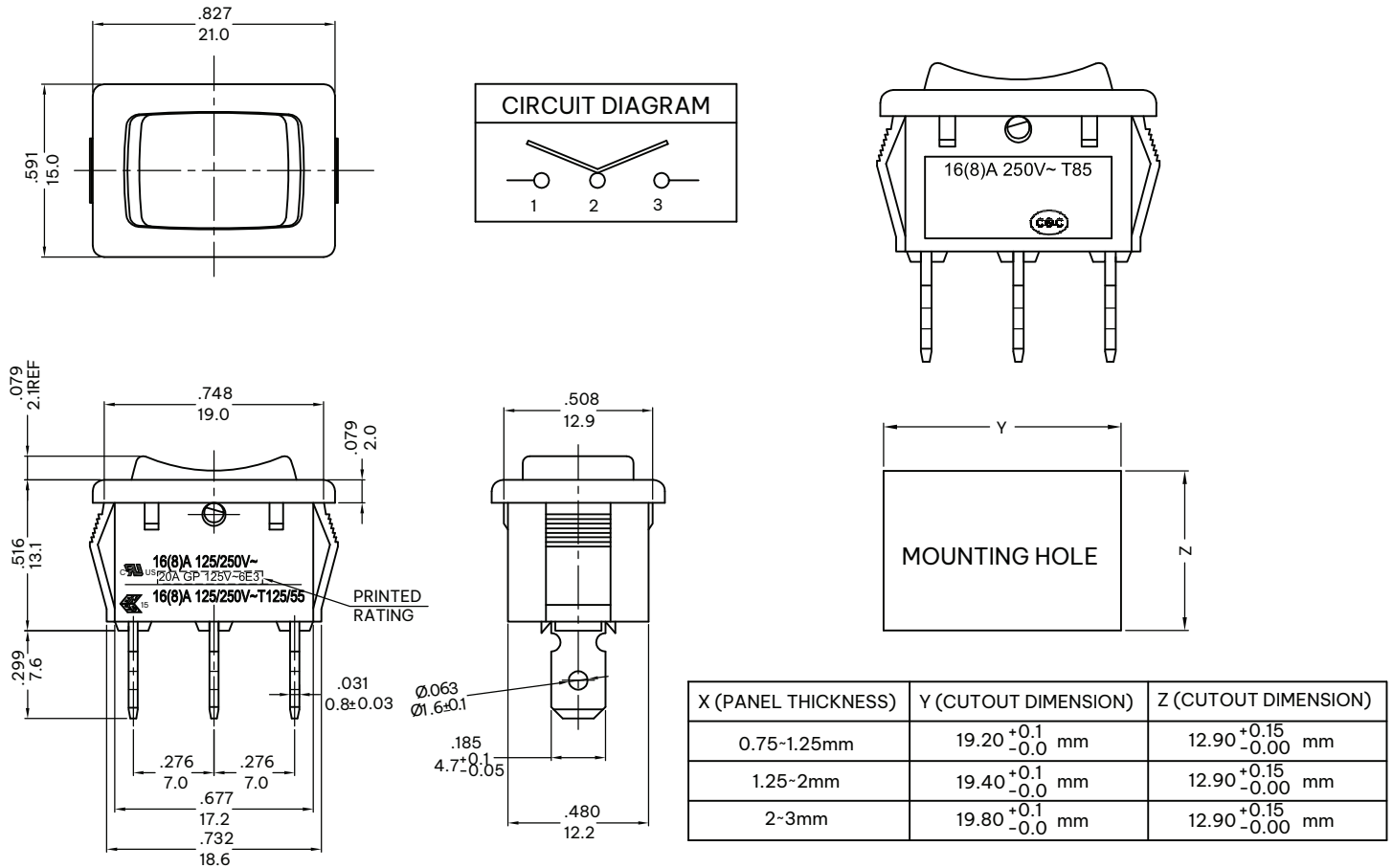
Product Specifications

Rocker Switch Specifications	
Rating:	20A 125VAC
	16 (8)A 125/250V ~T55
	16 (8)A 125/250V ~T125/55
	16 (8)A 250V-T85
Switch Function:	3P ON-ON

Dielectric Voltage-Withstand:	1,500VAC For 1 Minute
Insulation Resistance:	DC 500V 100MΩ Min.
Contact Resistance:	20mΩ Initial Max.



VRS-3-Q3PSI-19KNN-0
 VRS-3-Q3PSI-19KNN-0-M2
 VRS-3-Q3PSI-19RNN-0-M2



- Notes:
- Tolerances unless otherwise specified: ± .012/0.3 (in/mm)
- VRS-3-Q3PSI-19KNN-0-M2 is similar to VRS-3-Q3PSI-19KNN-0 but with an M2 marking. See page 2.
- VRS-3-Q3PSI-19RNN-0-M2 is similar to VRS-3-Q3PSI-19KNN-0 but with actuator in red and M2 marking. See page 2.

Product Specifications

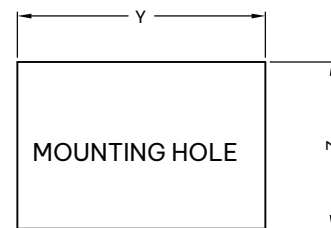
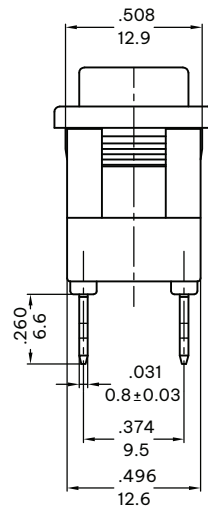
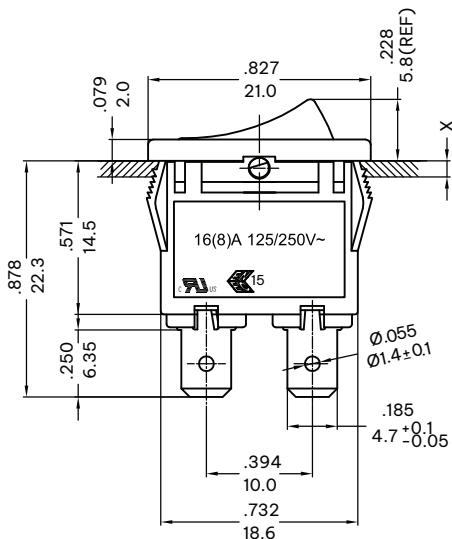
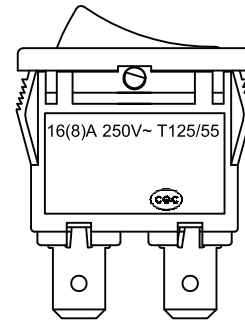
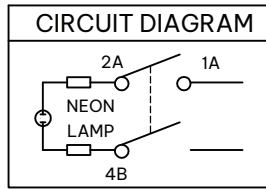
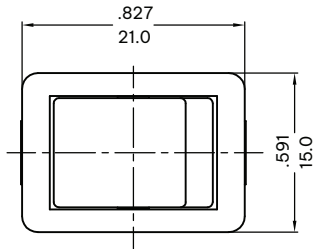
Rocker Switch Specifications	
Rating:	20A 125VAC UL <small>US</small>
	16 (8)A 125/250V ~T55 UL <small>US</small>
	16 (8)A 125/250V -T125/55 UL <small>15</small>
	16 (8)A 250V~T85 CQC
Switch Function:	3P ON-OFF-ON



Dielectric Voltage-Withstand:	1,500VAC For 1 Minute
Insulation Resistance:	DC 500V 100MΩ Min.
Contact Resistance:	20mΩ Initial Max.



VRS-1-Q3PSI-19GIG-0
 VRS-1-Q3PSI-19RIR-0



X (PANEL THICKNESS)	Y (CUTOUT DIMENSION)	Z (CUTOUT DIMENSION)
0.75-1.25mm	19.20 ^{+0.1} _{-0.0} mm	12.90 ^{+0.15} _{-0.00} mm
1.25-2mm	19.40 ^{+0.1} _{-0.0} mm	12.90 ^{+0.15} _{-0.00} mm
2-3mm	19.80 ^{+0.1} _{-0.0} mm	12.90 ^{+0.15} _{-0.00} mm

Notes:

1. Tolerances unless otherwise specified: ± .012/0.3 (in/mm)
 2. VRS-1-Q3PSI-19RIR-0 has actuator in green
 3. VRS-1-Q3PSI-19GIG-0 has actuator in red.
- See page 2.

VRS-1-Q3PSI-19GIG-0



VRS-1-Q3PSI-19RIR-0



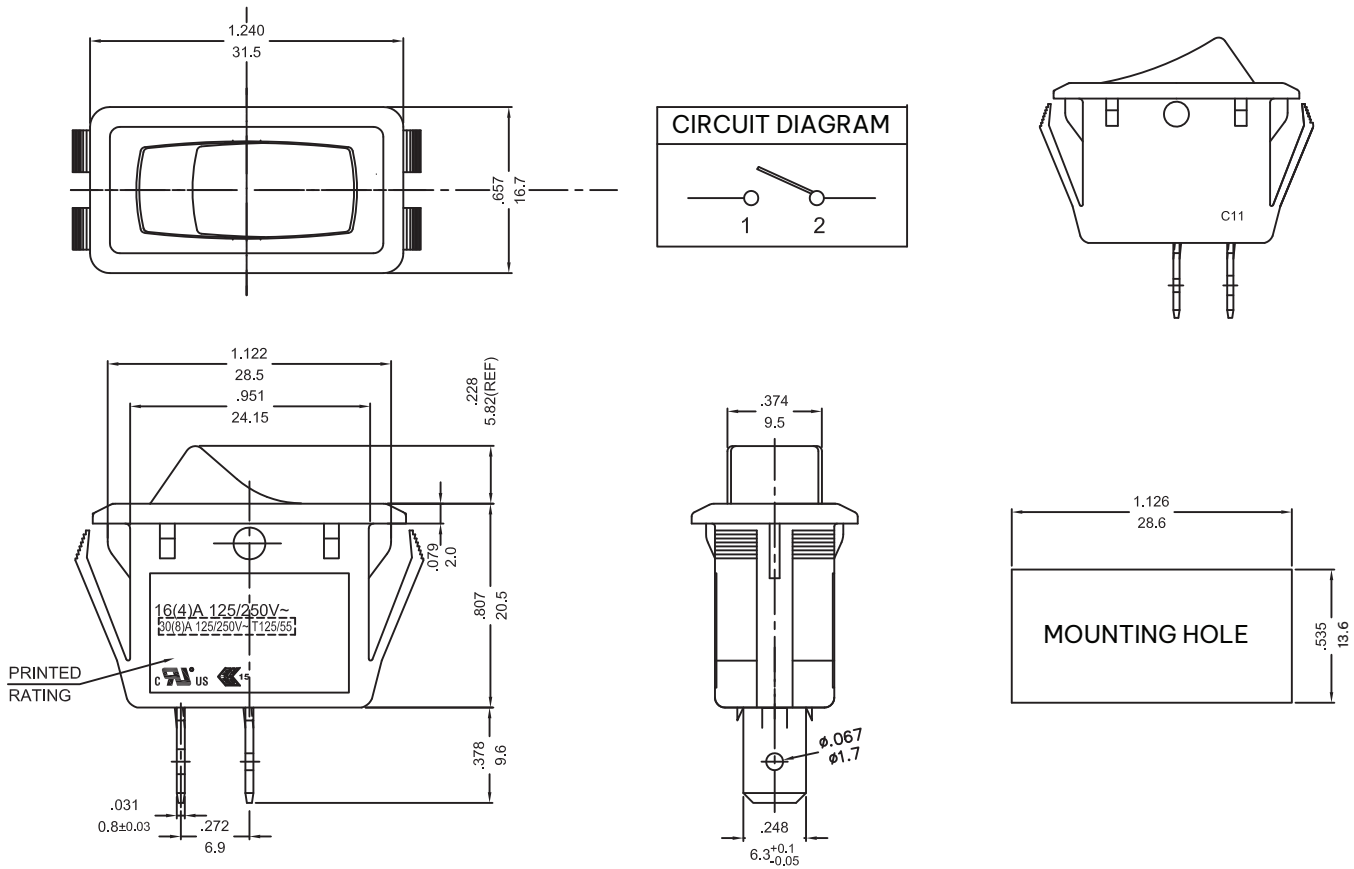
Product Specifications

Rocker Switch Specifications	
Rating:	16A 125VAC, 8A 250 VAC
	16 (8)A 250V~T125/55
Switch Function:	3P OFF-ON

Dielectric Withstand Voltage	1,500VAC 1 Minute
Insulation Resistance:	500VDC 100MΩ Min.
Contact Resistance:	20mΩ Initial Max.
Illumination:	100-125 VAC



VRS-1-Q2PSI-28KNN-0
 VRS-1-Q2PSI-28KNN-0-M1



Notes:

1. Tolerances unless otherwise specified: $\pm .012/0.3$ (in/mm)
2. VRS-1-Q2PSI-28KNN-0-M1 is similar to VRS-1-Q2PSI-28KNN-0 with an M1 marking. See page 2.

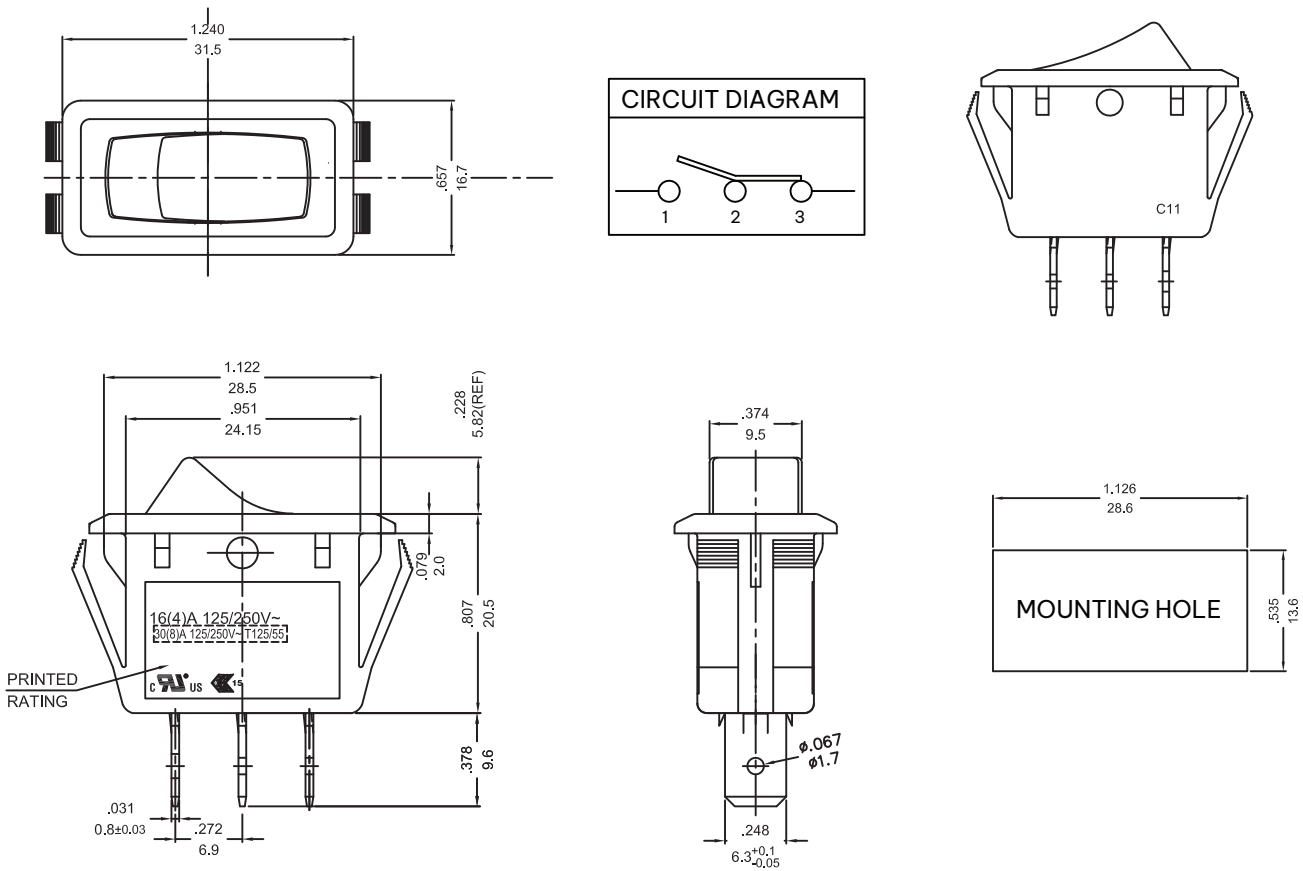
Product Specifications

Rocker Switch Specifications	
Rating:	30A 125 VAC, 8A 250 VAC
Dielectric Withstand Voltage:	1,000VAC 1 Minute
Insulation Resistance:	500VDC 100M Ω Min.
Contact Resistance:	20m Ω Initial Max.
Switch Function:	2P OFF-ON






VRS-4-Q3PSI-28KNN-0



Note:

1. Tolerances unless otherwise specified: ± .012/0.3 (in/mm)

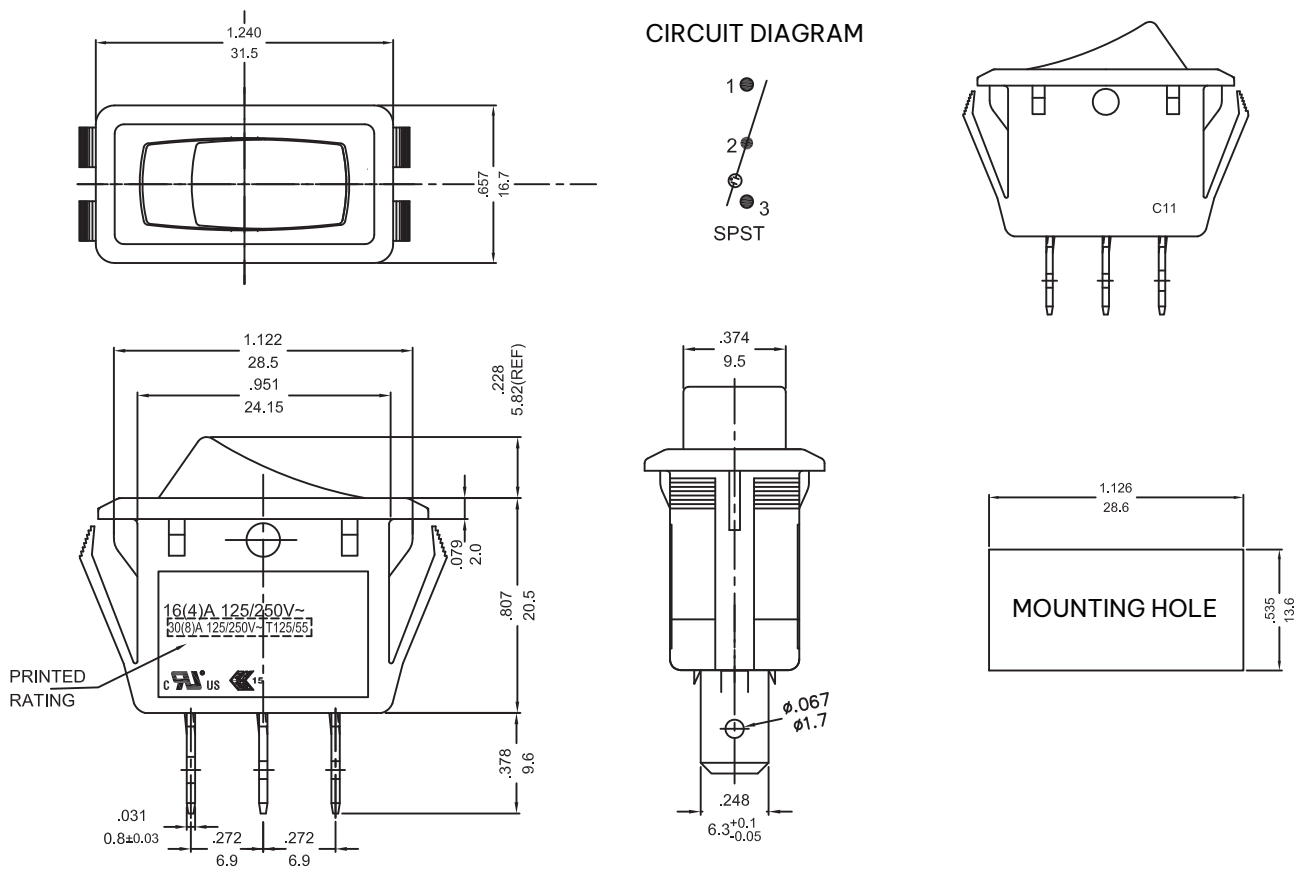
Product Specifications

Rocker Switch Specifications	
Rating:	30A 125 VAC, 8A 250 VAC 
Dielectric Withstand Voltage:	1,000VAC 1 Minute
Insulation Resistance:	500VDC 100MΩ Min.
Contact Resistance:	20mΩ Initial Max.
Switch Function:	3P ON-ON





VRS-1-Q3PSI-28RIR-0



Note:

1. Tolerances unless otherwise specified: $\pm .012/0.3$ (in/mm)

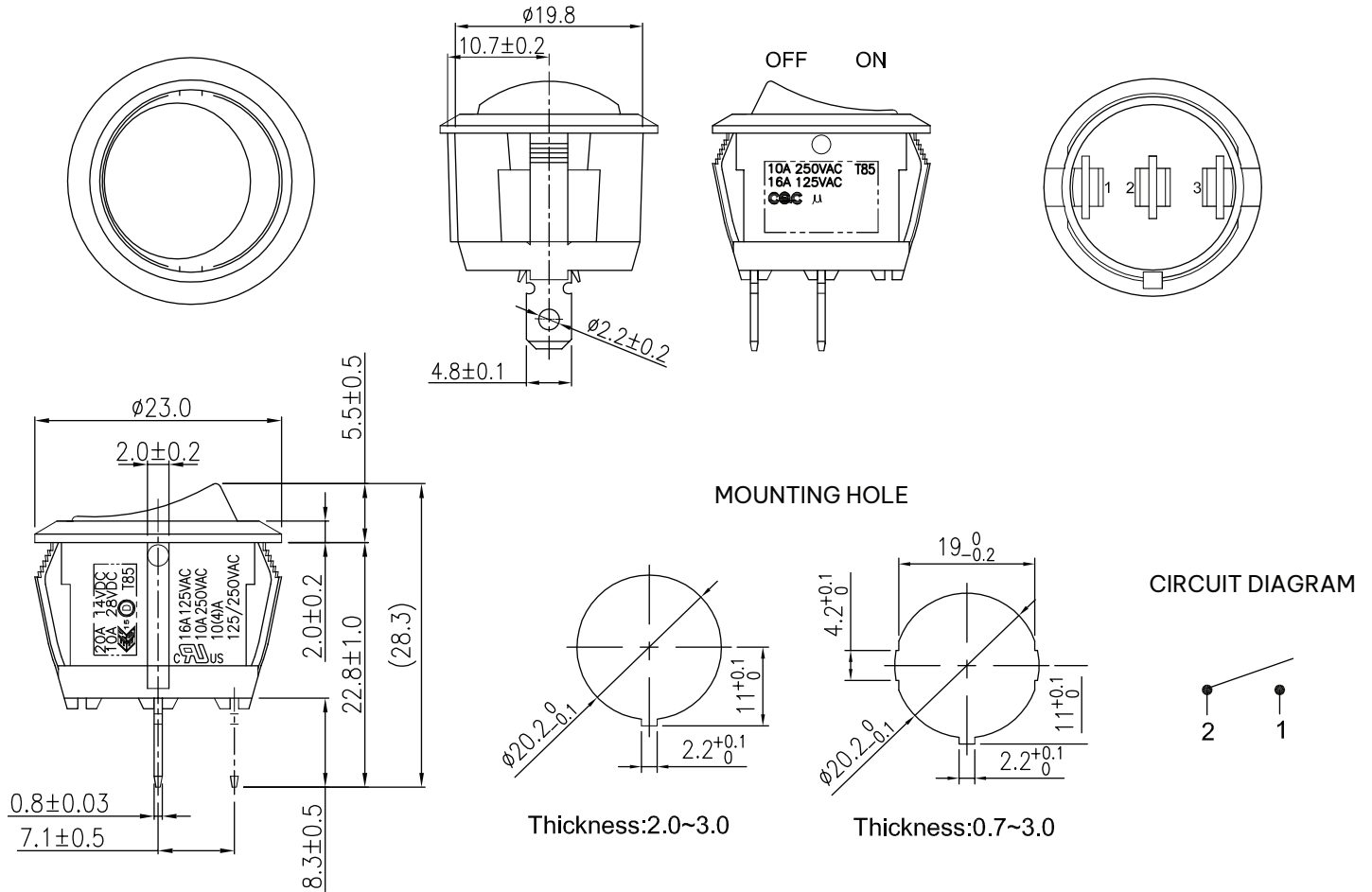
Product Specifications

Rocker Switch Specifications	
Rating:	30A 125 VAC, 8A 250 VAC
Dielectric Withstand Voltage:	1,000VAC 1 Minute
Insulation Resistance:	500VDC 100M Ω Min.
Contact Resistance:	20m Ω Initial Max.
Illumination:	100~125VAC
Switch Function:	3P OFF-ON





VRS-1-Q2PSI-20KNN-0



Note:

1. Tolerances unless otherwise specified: ± 0.3



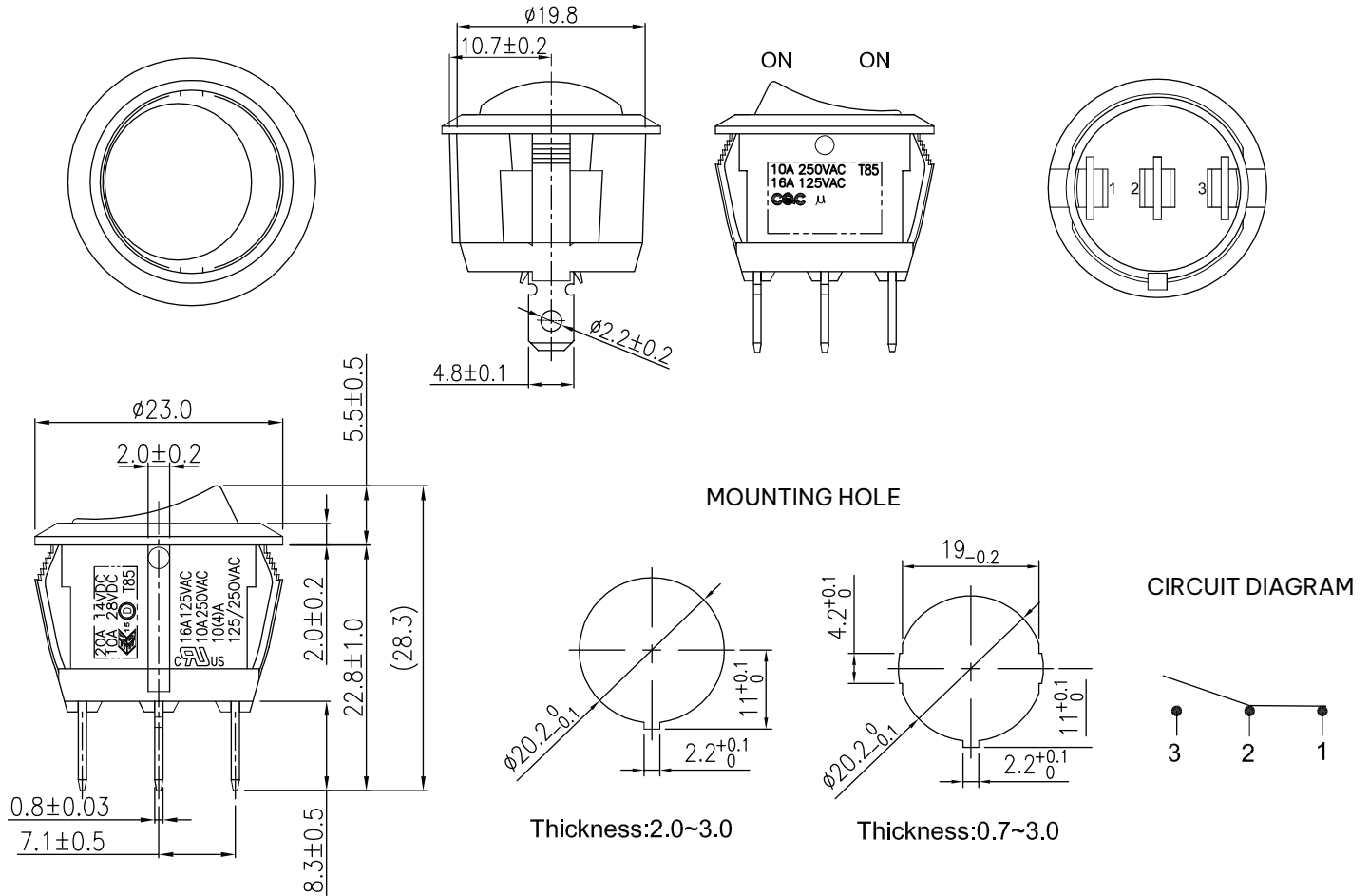
Product Specifications

Rating:	16A 125VAC, 10A 250VAC
	10A 125VAC, 4A 250VAC T85 20A 14VDC, 10A 28VDC
	10A 250VAC T85 16A 125VAC
Contact Resistance	50mΩ Max.
Insulation Resistance	DC 500V 100MΩ Min.
Dielectric Strength	AC 1500V 1 minute
Operation temperature	-25°C ~ 85°C
Switch Function	2P OFF-ON

MATERIAL	
Frame:	Nylon 66
Actuator:	Nylon 66
Terminals:	Copper
Contacts:	AgSnO2InO3



VRS-4-Q3PSI-20KNN-0



Note:

1. Tolerances unless otherwise specified: ± 0.3

Product Specifications

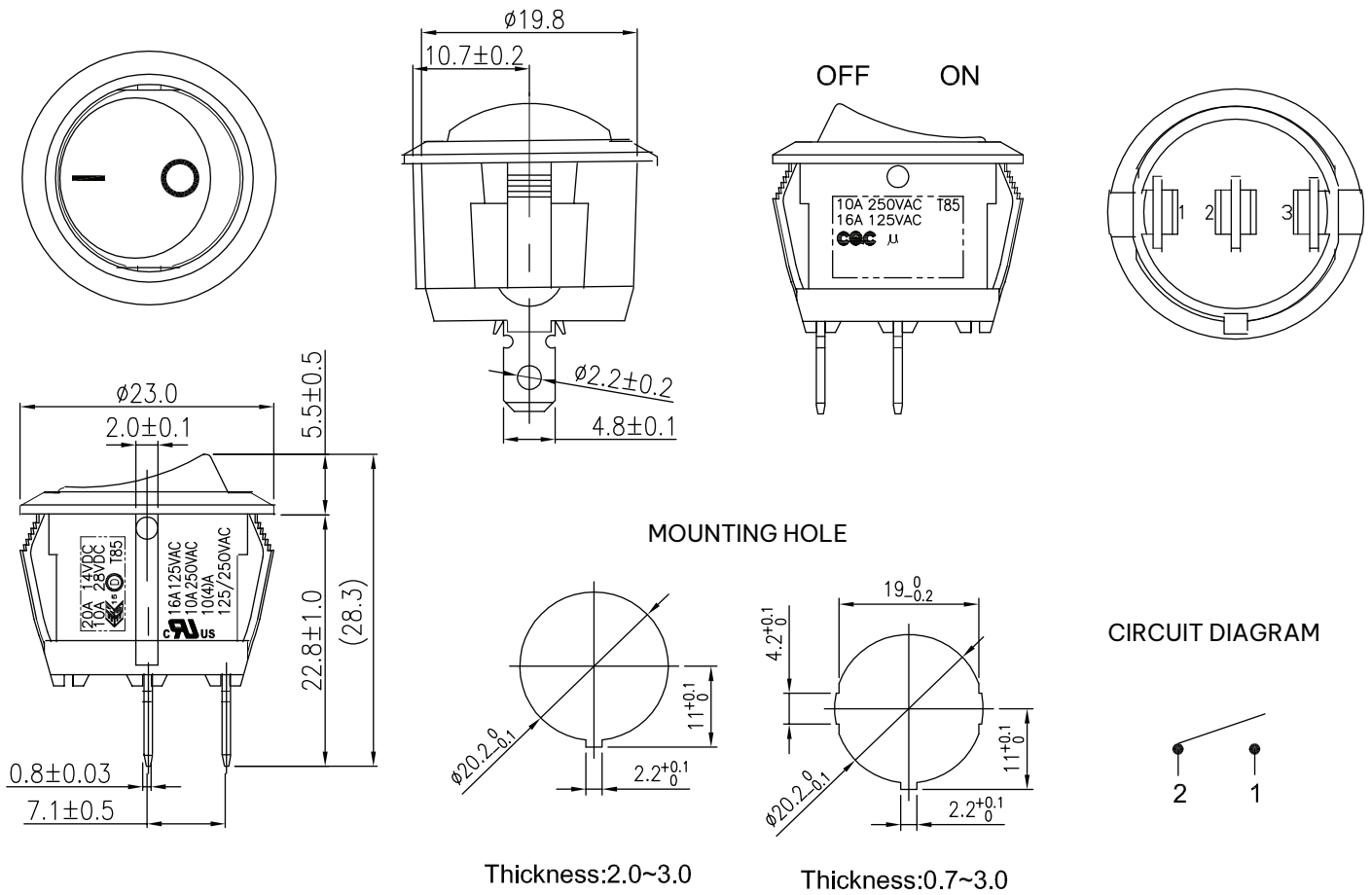
Rating:	16A 125VAC, 10A 250VAC
	10A 125VAC, 4A 250VAC T85
	20A 14VDC, 10A 28VDC
	10A 250VAC T85
Contact Resistance	50mΩ Max.
Insulation Resistance	DC 500V 100MΩ Min.
Dielectric Strength	AC 1500V 1 minute
Operation temperature	-25°C ~ 85°C
Switch Function	3P ON-ON



MATERIAL	
Frame:	Nylon 66 Black
Actuator:	Nylon 66 Black
Terminals:	Cooper Alloy, Silver plating



VRS-1-Q2PSI-20KNN-0-M1



Note:

1. Tolerances unless otherwise specified: ± 0.3

Product Specifications

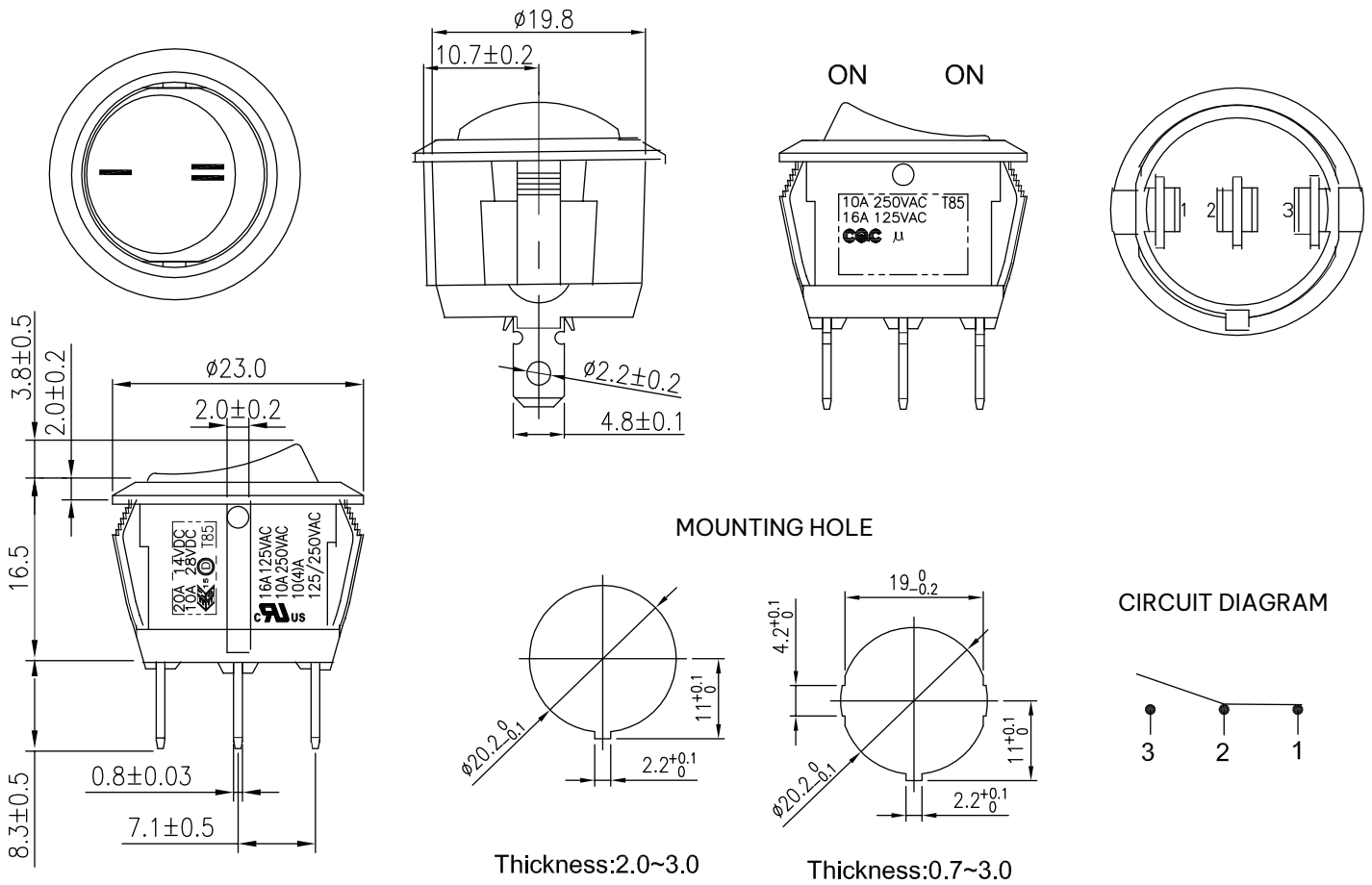
Rating:	16A 125VAC, 10A 250VAC
	110A 125VAC, 4A 250VAC T85 20A 14VDC, 10A 28VDC
	10A 250VAC 16A 125VAC T85 μ
Contact Resistance	50m Ω Max.
Insulation Resistance	DC 500V 100M Ω Min.
Dielectric Strength	AC 1500V 1 minute
Operation temperature	-25°C ~ 85°C
Switch Function	2P OFF-ON



MATERIAL	
Frame:	Nylon 66 Black (94V-2)
Actuator:	Nylon 66 Black (94V-2)
Terminals:	Cooper Alloy, Silver plating
Marking	White, O-



VRS-4-Q3PSI-20KNN-0-M3

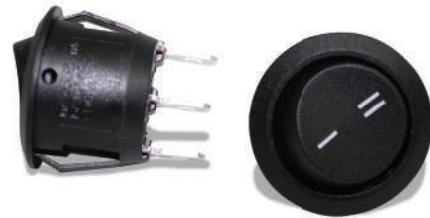


Note:

1. Tolerances unless otherwise specified: ± 0.3

Product Specifications

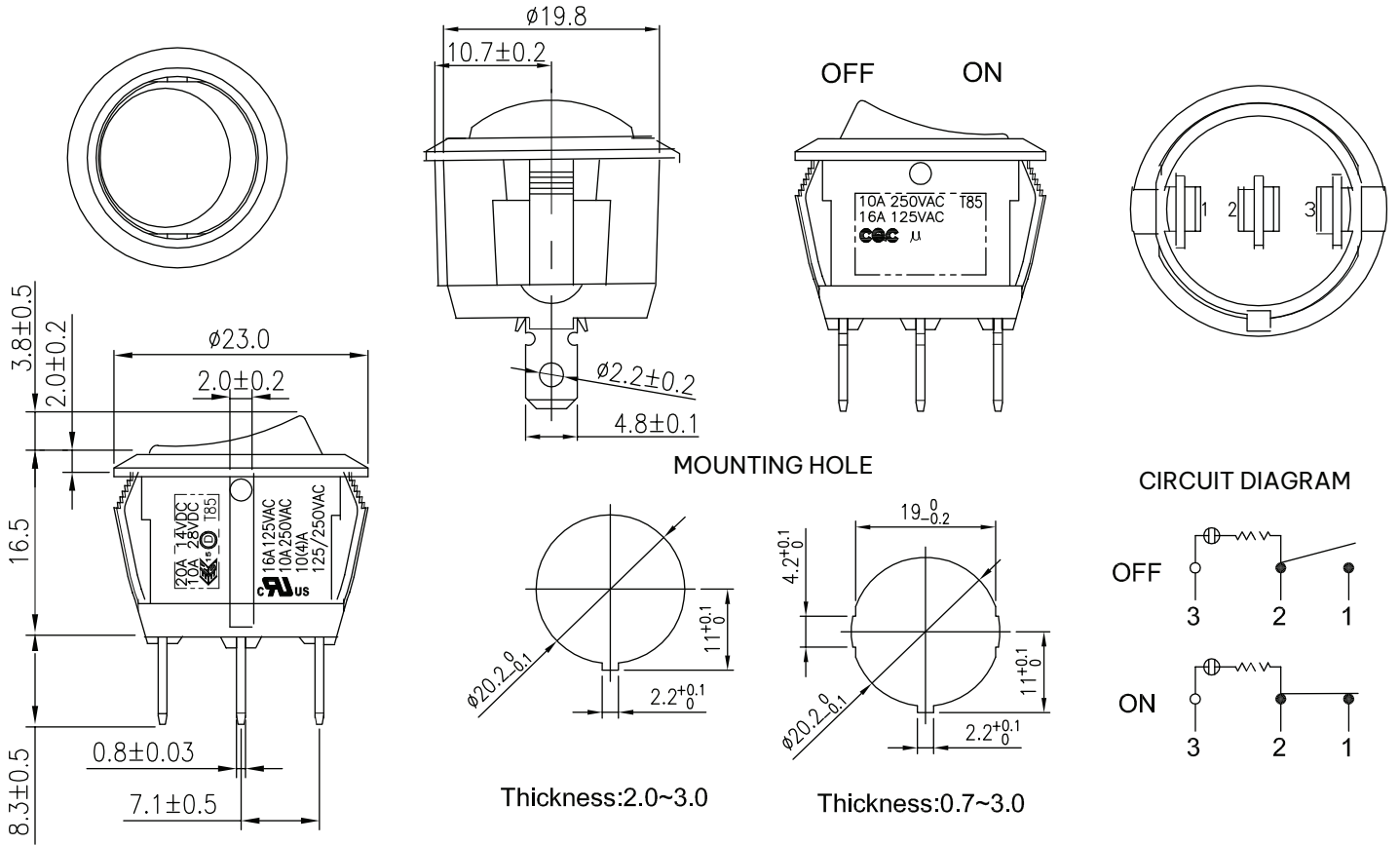
Rating:	16A 125VAC, 10A 250VAC
	10A 125VAC, 4A 250VAC T85 20A 14VDC, 10A 28VDC
	10A 250VAC T85 16A 125VAC μ
Contact Resistance	50m Ω Max.
Insulation Resistance	DC 500V 100M Ω Min.
Dielectric Strength	AC 1500V 1 minute
Operation temperature	-25°C ~ 85°C
Switch Function	3P ON-ON



MATERIAL	
Frame:	Nylon 66 Black (94V-2)
Actuator:	Nylon 66 Black (94V-2)
Marking	White, -=
Terminals:	Cooper alloy, Silver plating

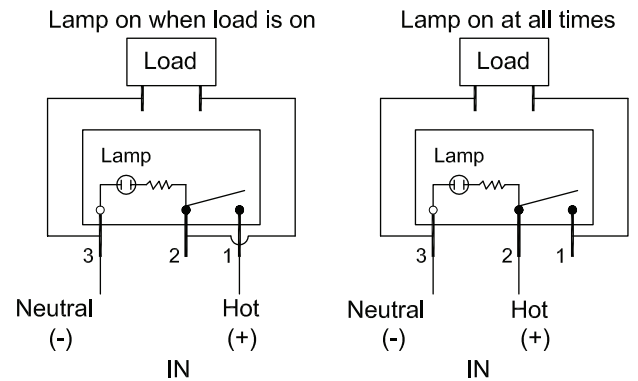


VRS-1-2Q3PSI-20RIR-0
VRS-1-2Q3PSI-20GIG-0



Notes:

1. Tolerances unless otherwise specified: ± 0.3
2. VRS-1-2Q3PSI-20GIG-0 is similar to VRS-1-2Q3PSI-20RIR-0 with actuator in green. See page 2.



Product Specifications

Rating:	16A 125VAC, 10A 250VAC
	10A 125VAC, 4A 250VAC, 20A 14VDC, 10A 28VDC
	10A 250VAC, 16A 125VAC
Contact Resistance	50mΩ Max.
Insulation Resistance	DC 500V 100MΩ Min.
Dielectric Strength	AC 1500V 1 minute
Operation temperature	-25°C ~ 85°C
Switch Function	3P OFF-ON



MATERIAL	
Frame:	Nylon 66 Black (94V-2)
Actuator:	Nylon 66 Black (94V-2)
Terminals:	Cooper alloy, Silver plating



Compliances and approvals

