

LMS Series

Ø.281" (7.14mm) Clear Rigid Panel Mount Light Pipe



Developed for harsh environment applications, the rugged linear light pipes provide moisture-sealed protection up to NEMA 4P and IP56 ratings.

Applications

- Automotive
- Aerospace
- Industrial
- Medical
- Military
- Studio Control
- Transportation
- Data Centers
- Control Panels

Key Features

- For panel hole diameter on .281" (7.14mm) on .375" (9.53mm) centers
- Panel thickness of .031" (0.8mm) to .125" (3.18mm)
- Available in red, amber, green, blue, yellow, and clear transparent lens
- NEMA 4P and IP56 rated
- 5mm thread
- Available in standard lengths from .33" to 1.33"
- Optical grade acrylic for maximum light transmission (UL94-HB)
- Thermo plastic elastomer (TPE) seals
- Moisture-sealed protection for harsh environment applications
- Easy to install and engineered to perform
- U.S. & Foreign Pat. issued
- Custom lengths available, contact VCC
- RoHS and REACH Compliant

Ordering Data

Series		Length Code (Min 033=.330" / Max 133=1.33")		Color	
LMS	-	033		-	RTP
		033	.330" (8.38mm)	RTP	Red Transparent
		053	.530" (13.46mm)	ATP	Amber Transparent
		073	.730" (18.54mm)	GTP	Green Transparent
		093	.930" (23.62mm)	BTP	Blue Transparent
		113	1.13" (28.70mm)	YTP	Yellow Transparent
		133	1.33" (33.78mm)	CTP	Clear Transparent

Custom lengths upon request. Contact VCC



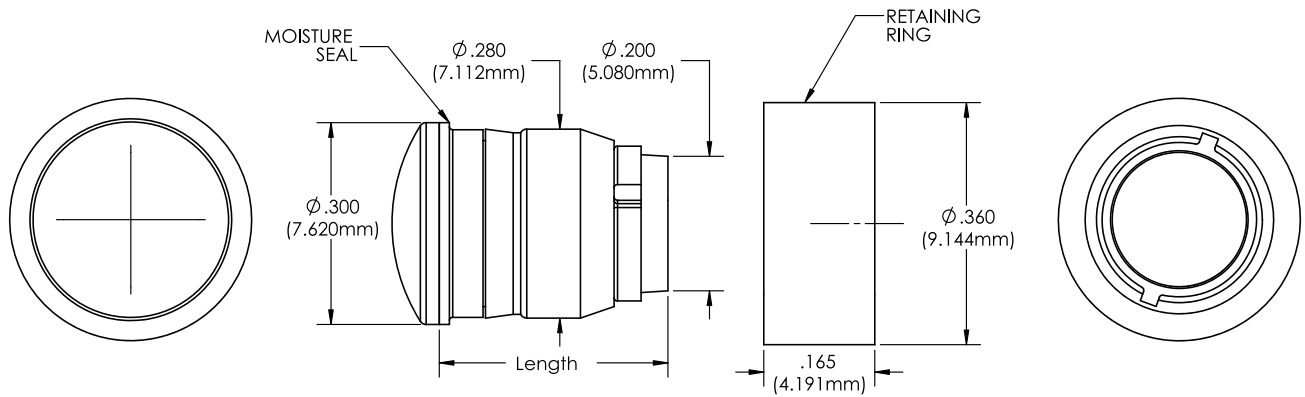
Example:

LMS_033_RTP

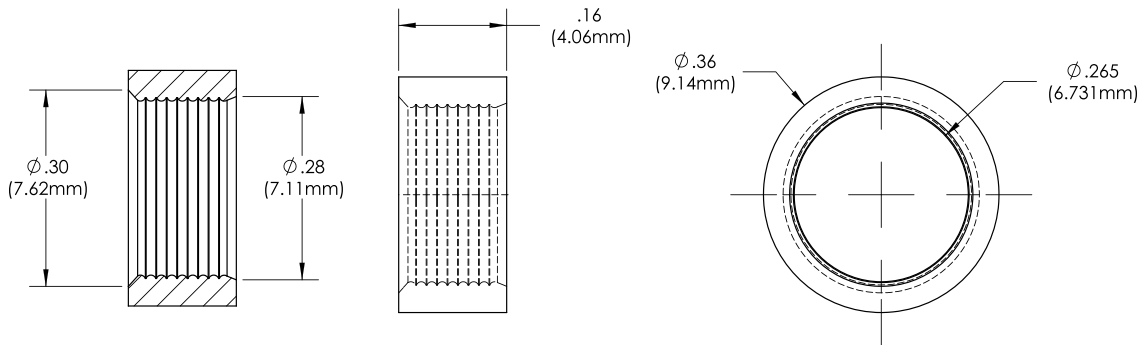
LMS Series .330" Length, Red Transparent Lens

Product Dimensions

LMS Series



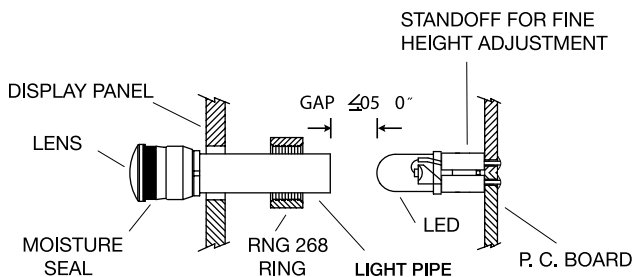
RNG_268



Please see RNG_268 Datasheet for more details

Application

Pass lens through panel opening. Press on retaining ring. Air gap .050 " maximum between LED and light pipe . Use standoff to adjust LED height.



Notes:

1. All dimensions are in inches (millimeters)
2. The specifications, characteristics and technical data described in the datasheet are subject to change without prior notice.

Product Specifications

Materials	
Body	Clear optical grade acrylic, UL rating 94-HB
Lens	Polycarbonate, UL 94-V2
Seal	TPE
Retaining Ring	Polypropylene (Black)

Installation Specifications	
Mounting Hole	.281" (7.14mm) on .375" (9.53mm) centers
Panel Thickness	.031" (0.8mm) to .125" (3.18mm)

Compliances and Approvals

