



# LFBR Series 3mm (0.118") Reverse Panel Mount Press Fit Rigid Light Pipes

LFBR 3mm reverse mount light pipes with crushable ribs & press-fit installation deliver superior light transmittance and a wide 120 deg viewing angle.



## Applications

- Audio/Video
- Communication
- Darkroom Equipment
- Industrial
- Maritime, Oil & Gas
- Automation & Controls
- Instrumentation
- Transportation
- Robotics

## Key Features

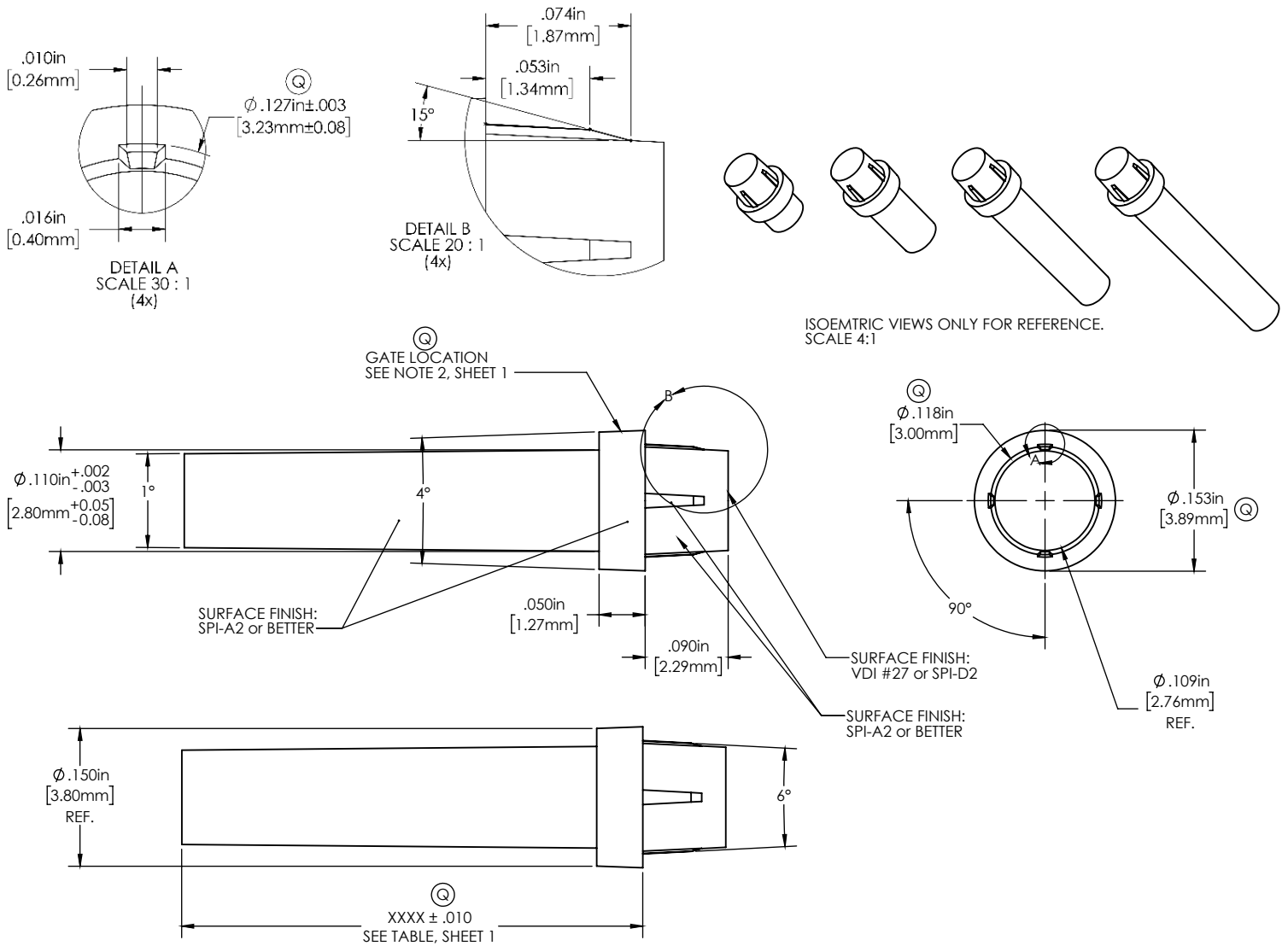
- Optical-grade polycarbonate delivers superior light transmission.
- Will not yellow or tarnish in UV or high-moisture environments.
- UL94V-0 rating ensures secure fire-retardant performance.
- Halogen-free material.
- Enhanced resin system provides superb mechanical & optical stability for harsh or damp conditions.
- Reverse-mount design accommodates products where the PCB is difficult to reach.
- Press-fit mounting and crushable ribs simplify installation and assembly.
- Dome lens options provide wide viewing angle.
- Flat lens options support low profile panel designs.
- Standard length options from .100" to .830" .
- RoHS and REACH compliant.
- Compatible with single and multi-color SMD LEDs, such as VCC's SpectraBright, LSM, CMD15, CMD17, VAOL series, and other light sources.

## Ordering Data

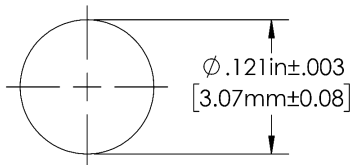
Series	Length	Color																										
<b>LFBR - Flat Lens</b>	012	C																										
		Clear																										
	<table border="1"> <thead> <tr> <th>VCC Part Number</th> <th>Body Length</th> </tr> </thead> <tbody> <tr><td>LFBR3F0100C</td><td>0.100" (2.5mm)</td></tr> <tr><td>LFBR3F0125C</td><td>0.125" (3.2mm)</td></tr> <tr><td>LFBR3F0196C</td><td>0.196" (5.0mm)</td></tr> <tr><td>LFBR3F0250C</td><td>0.250" (6.4mm)</td></tr> <tr><td>LFBR3F0275C</td><td>0.275" (7.0mm)</td></tr> <tr><td>LFBR3F0313C</td><td>0.313" (7.9mm)</td></tr> <tr><td>LFBR3F0350C</td><td>0.350" (8.9mm)</td></tr> <tr><td>LFBR3F0375C</td><td>0.375" (9.5mm)</td></tr> <tr><td>LFBR3F0500C</td><td>0.500" (12.7mm)</td></tr> <tr><td>LFBR3F0625C</td><td>0.625" (15.9mm)</td></tr> <tr><td>LFBR3F0750C</td><td>0.750" (19.0mm)</td></tr> <tr><td>LFBR3F0830C</td><td>0.830" (21.1mm)</td></tr> </tbody> </table>	VCC Part Number	Body Length	LFBR3F0100C	0.100" (2.5mm)	LFBR3F0125C	0.125" (3.2mm)	LFBR3F0196C	0.196" (5.0mm)	LFBR3F0250C	0.250" (6.4mm)	LFBR3F0275C	0.275" (7.0mm)	LFBR3F0313C	0.313" (7.9mm)	LFBR3F0350C	0.350" (8.9mm)	LFBR3F0375C	0.375" (9.5mm)	LFBR3F0500C	0.500" (12.7mm)	LFBR3F0625C	0.625" (15.9mm)	LFBR3F0750C	0.750" (19.0mm)	LFBR3F0830C	0.830" (21.1mm)	
VCC Part Number	Body Length																											
LFBR3F0100C	0.100" (2.5mm)																											
LFBR3F0125C	0.125" (3.2mm)																											
LFBR3F0196C	0.196" (5.0mm)																											
LFBR3F0250C	0.250" (6.4mm)																											
LFBR3F0275C	0.275" (7.0mm)																											
LFBR3F0313C	0.313" (7.9mm)																											
LFBR3F0350C	0.350" (8.9mm)																											
LFBR3F0375C	0.375" (9.5mm)																											
LFBR3F0500C	0.500" (12.7mm)																											
LFBR3F0625C	0.625" (15.9mm)																											
LFBR3F0750C	0.750" (19.0mm)																											
LFBR3F0830C	0.830" (21.1mm)																											

Series	Length	Color																						
<b>LFBR - Domed Lens</b>	012	C																						
		Clear																						
	<table border="1"> <thead> <tr> <th>VCC Part Number</th> <th>Body Length</th> </tr> </thead> <tbody> <tr><td>LFBR3D0125C</td><td>0.125" (3.2mm)</td></tr> <tr><td>LFBR3D0175C</td><td>0.175" (4.4mm)</td></tr> <tr><td>LFBR3D0250C</td><td>0.250" (6.4mm)</td></tr> <tr><td>LFBR3D0313C</td><td>0.313" (7.9mm)</td></tr> <tr><td>LFBR3D0350C</td><td>0.350" (8.9mm)</td></tr> <tr><td>LFBR3D0375C</td><td>0.375" (9.5mm)</td></tr> <tr><td>LFBR3D0460C</td><td>0.460" (11.7mm)</td></tr> <tr><td>LFBR3D0500C</td><td>0.500" (12.7mm)</td></tr> <tr><td>LFBR3D0625C</td><td>0.625" (15.9mm)</td></tr> <tr><td>LFBR3D0750C</td><td>0.750" (19.0mm)</td></tr> </tbody> </table>	VCC Part Number	Body Length	LFBR3D0125C	0.125" (3.2mm)	LFBR3D0175C	0.175" (4.4mm)	LFBR3D0250C	0.250" (6.4mm)	LFBR3D0313C	0.313" (7.9mm)	LFBR3D0350C	0.350" (8.9mm)	LFBR3D0375C	0.375" (9.5mm)	LFBR3D0460C	0.460" (11.7mm)	LFBR3D0500C	0.500" (12.7mm)	LFBR3D0625C	0.625" (15.9mm)	LFBR3D0750C	0.750" (19.0mm)	
VCC Part Number	Body Length																							
LFBR3D0125C	0.125" (3.2mm)																							
LFBR3D0175C	0.175" (4.4mm)																							
LFBR3D0250C	0.250" (6.4mm)																							
LFBR3D0313C	0.313" (7.9mm)																							
LFBR3D0350C	0.350" (8.9mm)																							
LFBR3D0375C	0.375" (9.5mm)																							
LFBR3D0460C	0.460" (11.7mm)																							
LFBR3D0500C	0.500" (12.7mm)																							
LFBR3D0625C	0.625" (15.9mm)																							
LFBR3D0750C	0.750" (19.0mm)																							

# Product Dimensions - Flat



## Recommended Mounting Hole

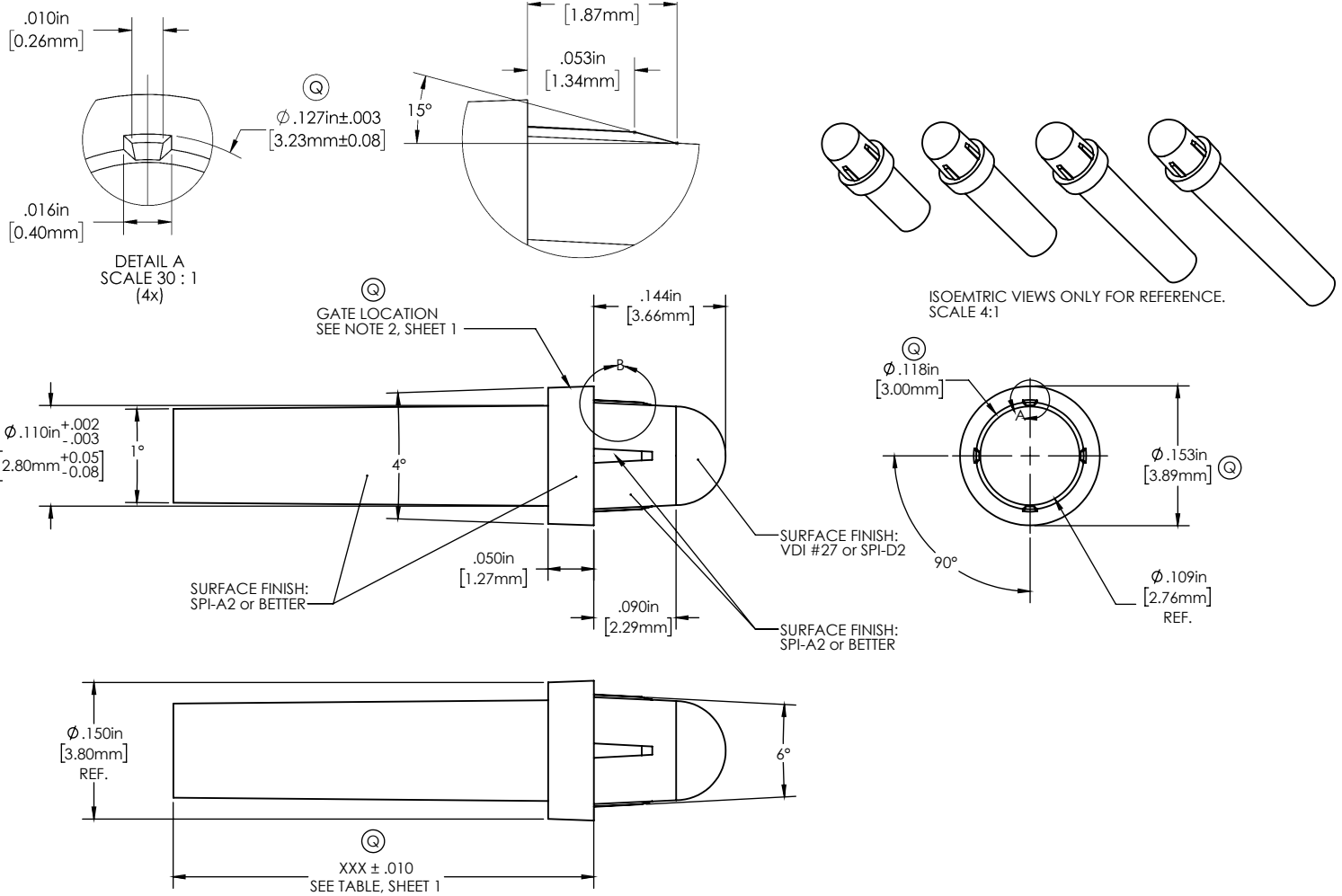


RECOMMENDED MOUNTING HOLE  
 PANEL THICKNESS: 0.039" [1mm] ~ 0.094" [2.4mm]

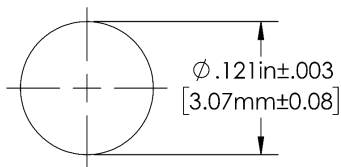
## Notes:

1. All dimensions are in inches [millimeters]
2. Tolerance is  $\pm 0.005"$  [0.1mm] unless otherwise noted.
3. The specifications, characteristics and technical data described in the datasheet are subject to change without prior notice.

# Product Dimensions - Domed



## Recommended Mounting Hole



RECOMMENDED MOUNTING HOLE  
PANEL THICKNESS: 0.039" [1mm] ~ 0.094" [2.4mm]

## Notes:

1. All dimensions are in inches [millimeters]
2. Tolerance is  $\pm 0.005"$  [0.1mm] unless otherwise noted.
3. The specifications, characteristics and technical data described in the datasheet are subject to change without prior notice.

## Product Specifications

### Materials

Body	Polycarbonate, Clear UL94V-0
------	------------------------------

### Temperature Specifications

Operating Temperature	-40° to 248F (-40° to 120C)
-----------------------	-----------------------------

### Installation Specifications

Diameter	Ø 0.121" +/-0.003 (3.07+/- 0.05mm)
Standard Lengths	.100" to 830" (2.5mm to 21.1mm)

### Recommendation:

Maximum air gap (clearance) between LED and light pipe for best performance:

0.020" [0.5mm] for wide viewing angle LED

0.050" [1.3mm] for narrow viewing angle LED

## Compliances and Approvals

