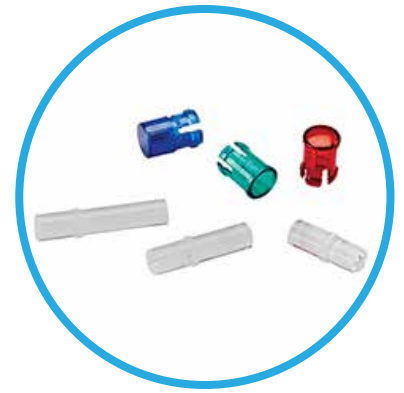


LCV Series

Ø.250" (6.35mm) Clear Rigid Panel Mount Light Pipe



5mm Round Light Pipe with 180° viewing angle available in different lengths. Fit into 0.250" (6.35mm) panel hole diameter on 3/8" centers.

Applications

- Audio/Video
- Dark Room Equipment
- Electrical Panels
- Control Panels
- Industrial
- Data Centers
- IoT
- Studio Control
- Transportation

Key Features

- For panel hole diameter .250" (6.35mm) hole on 3/8" centers.
- For panels less than 3/16" use SPC_125 spacer provides a reliable solution for high-vibration environments (SPC_125 sold separately)
- For use with through-hole and surface mount LEDs
- Available in standard lengths from .360" to 1.360"
- Optical grade acrylic for maximum light transmission (UL94-HB)
- Wide viewing angle at 180°
- Fits CLB_300 series lens (sold separately)
- Lens lock to light pipe by aligning the tabs with the lens slot
- U.S. & Foreign Pat. issued and pending
- Custom lengths available, contact VCC
- RoHS and REACH Compliant

Ordering Data

Series		Length Code (Min 036=.360" / Max 136=1.360")		Color	
LCV	-	096		-	CTP
		036	.360" (9.14mm)	CTP	Clear
		056	.560" (14.22mm)		
		076	.760" (19.30mm)		
		096	.960" (24.38mm)		
		116	1.160" (29.46mm)		
		136	1.360" (34.54mm)		

Custom lengths upon request. Contact VCC



Example:

LCV_096_CTP

LCV Series .960" Length, Clear Light Pipe

Recommended Retainer and Lenses for LCV Series (sold separately)



SPC_125

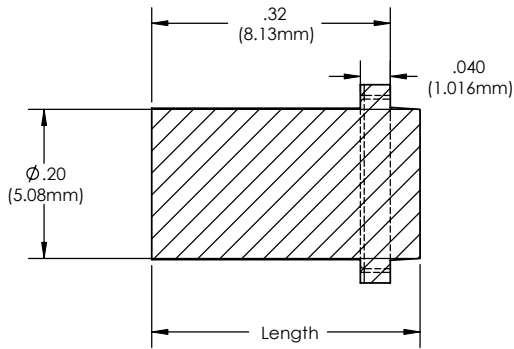
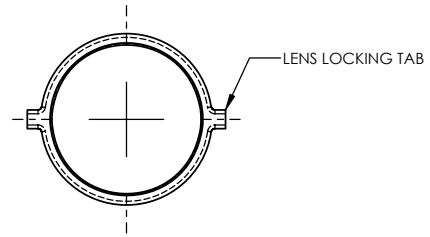
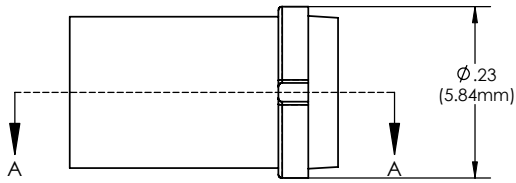


CLB_300 Series

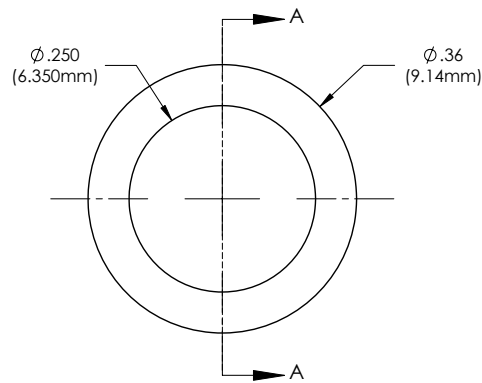
Available in multiple colors

Product Dimensions

LCV Series



SPC_125 (sold separately)



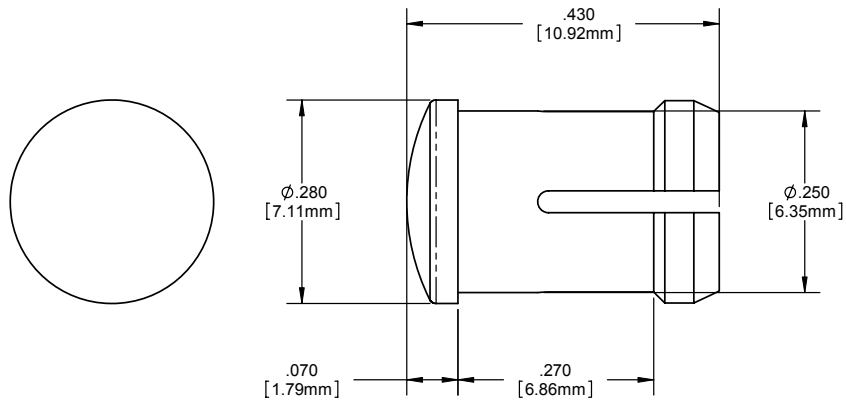
Please see SPC_125 Datasheet for more details

Notes:

1. All dimensions are in inches (millimeters)
2. The specifications, characteristics and technical data described in the datasheet are subject to change without prior notice.

Product Dimensions

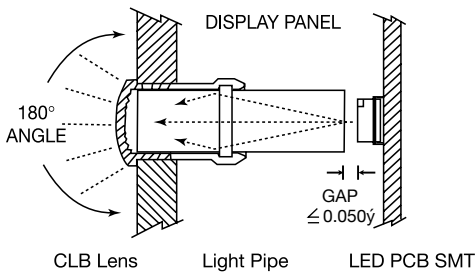
CLB_300 Series



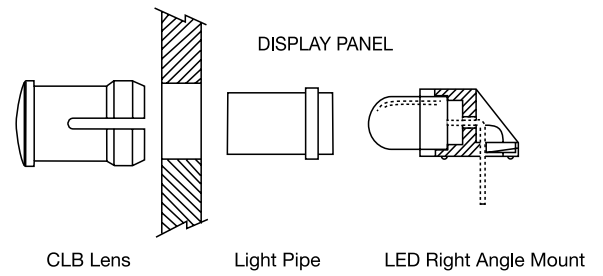
Please see CLB_300 Series Datasheet for more details

Application

Surface Mount LED



Right Angle LED



Notes:

1. All dimensions are in inches (millimeters)
2. The specifications, characteristics and technical data described in the datasheet are subject to change without prior notice.

Product Specifications

Materials	
Body	Clear optical grade acrylic, UL rating 94-HB
SPC_125	UL 94-HB Polypropylene Pro-fax SG702
CLB_300	Polycarbonate, UL 94-V2

Installation Specifications	
Mounting Hole	.250" (6.35mm) hole on 3/8" centers
Panel Thickness	For CLB_300: 1/32" to 1/4"
	For panels less than 3/16" use SPC_125

Compliances and Approvals

