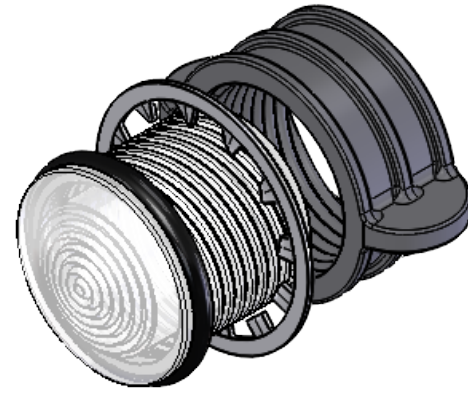


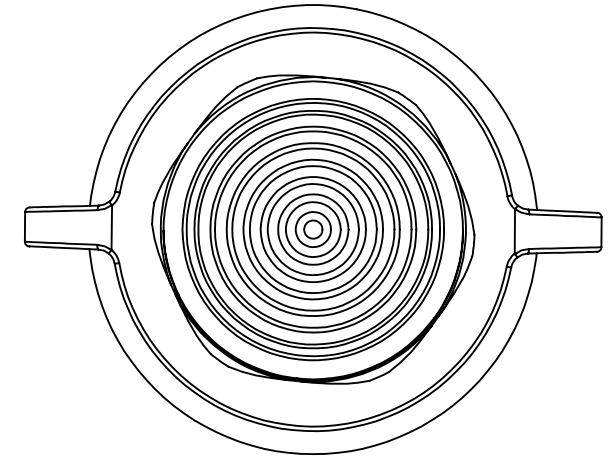
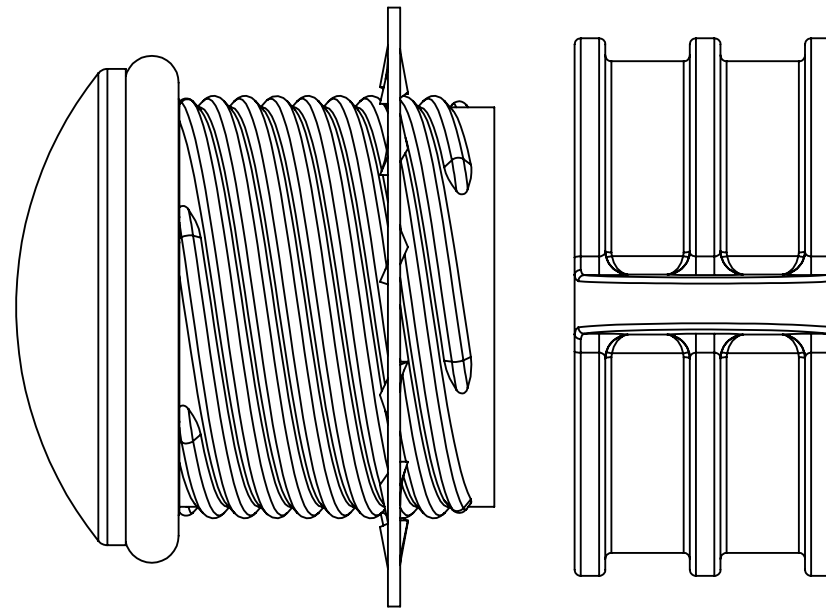
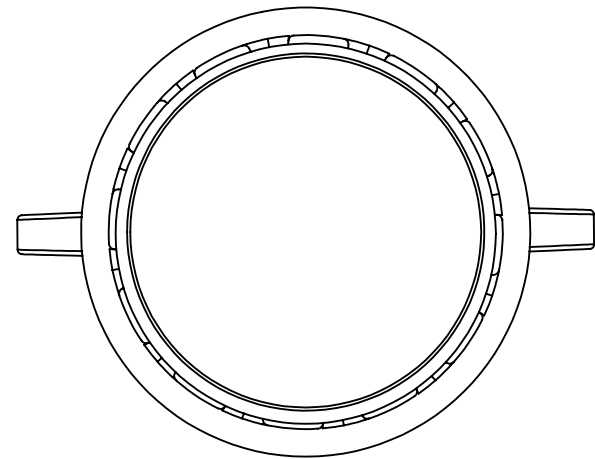
NOTES:

1. MOUNTING: MOUNTS IN A $\phi .562 \pm .002$ [$\phi 14.27\text{mm} \pm .05$] PANEL HOLE ON $.750$ [19.05mm] CENTERS. PANEL THICKNESS $.031$ [$.8\text{mm}$] TO $.187$ [4.75mm]. PANEL HOLE SHOULD BE DEBURRED, BUT NOT CHAMFERED.
2. ASSEMBLY: INSERT LENS THROUGH PANEL HOLE, SLIDE LOCK WASHER ONTO LENS BARREL AND TWIST ON RETAINING RING. PCB MOUNTED LEDS SLIDE INTO LENS WHEN THE PANEL COVER IS CLOSED OR THE PCB CARD IS INSERTED INTO THE CASE.
3. MATERIAL: LENS-POLYCARBONATE, UL 94-V2
 LOCK WASHER- FH STEEL, NICKEL PLATE
 RETAINING RING - THERMOPLASTIC, U.L. 94 V-0 RATED
 SEAL- EPDM
4. SOME PARTS PACKAGED SEPERATELY
5. U.S. & FOREIGN PAT. ISSUED & PEND.



ISOMETRIC VIEW
ONLY FOR REF.

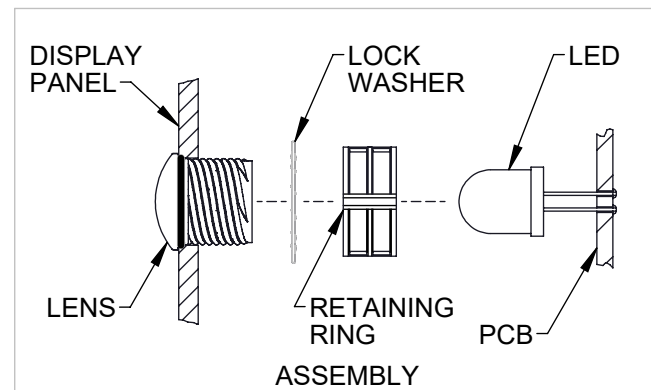
REVISIONS				
ECN#	REV.	DESCRIPTION	DATE	INITIALS
	001	REVISED PER ECR111009AZ01	7/7/10	KH
2148	002	RETAINING RING PART NUMBER UPDATED	05/25/23	AS



ORDERING CODE : **HMS 462 XXX**

MODEL

LENS COLOR	
RTP	RED TRANSPARENT
ATP	AMBER TRANSPARENT
GTP	GREEN TRANSPARENT
BTP	BLUE TRANSPARENT
YTP	YELLOW TRANSPARENT
CTP	CLEAR TRANSPARENT



DIMENSION STYLE: INCHES / MM GENERAL TOLERANCES UNLESS OTHERWISE SPECIFIED	
INCHES	MM
.X	$\pm .020$ $\pm .508$
.XX	$\pm .010$ $\pm .254$
.XXX	$\pm .005$ $\pm .127$
ANGLE $\pm 1^\circ$ BREAK ALL CORNERS AND SHARP EDGES .030 MAX	

THIRD ANGLE PROJECTION

PROPRIETARY AND CONFIDENTIAL
 THE INFORMATION CONTAINED IN THIS DRAWING IS THE SOLE PROPERTY OF VISUAL COMMUNICATIONS COMPANY, INC. ANY REPRODUCTION IN PART OR AS A WHOLE WITHOUT THE WRITTEN PERMISSION OF VISUAL COMMUNICATIONS COMPANY, INC IS PROHIBITED.

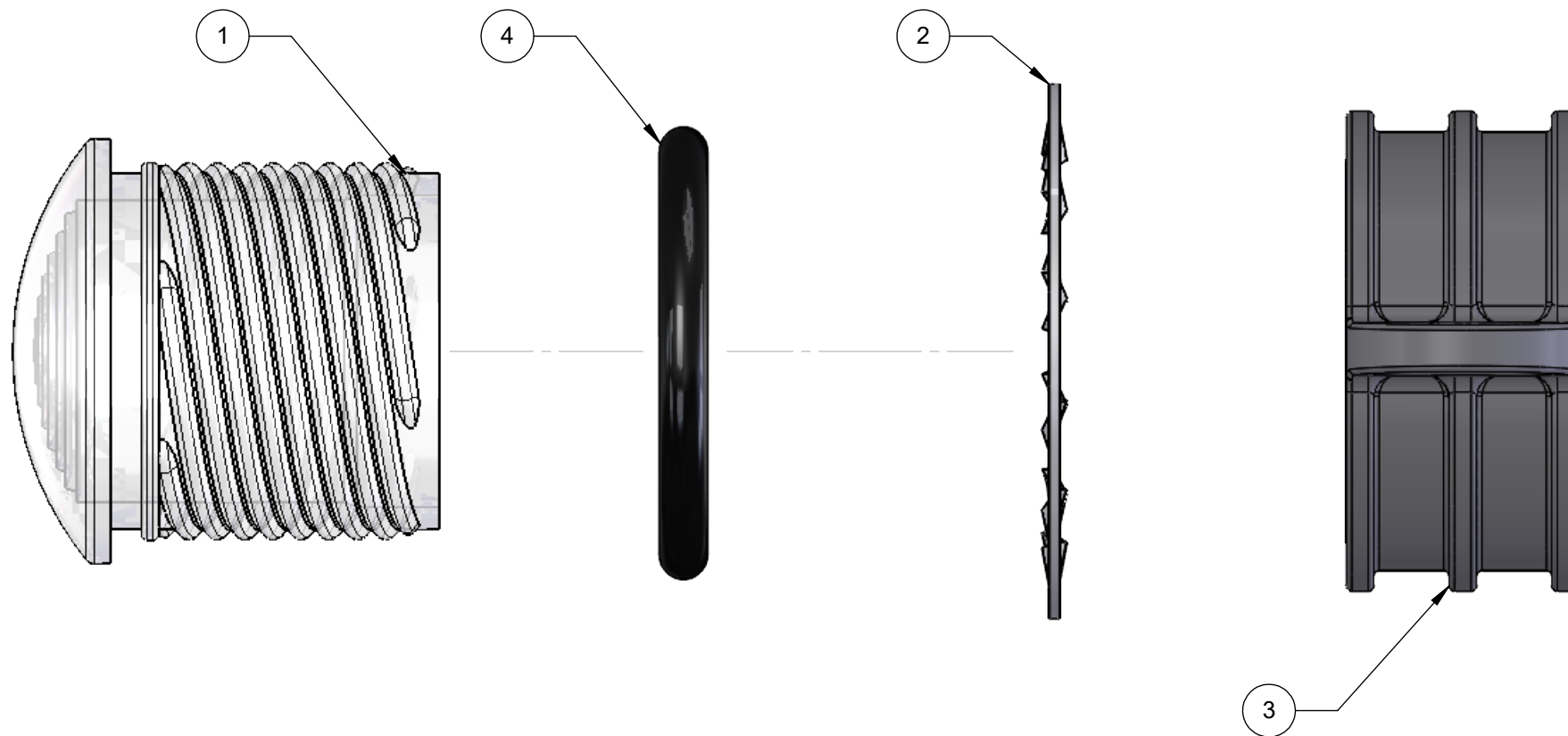
MATERIAL SEE NOTES	
FINISH SEE NOTES	
APPROVAL	DATE
DRAWN: K.Howard	7/7/10
CHECKED: DPZ	7/7/10
DO NOT SCALE DRAWING	

VCC OPTOELECTRONICS
 190 BOSSTICK BLVD, SUITE 101 SAN MARCOS, CA 92069 U.S.A
 PHONE: (760) 560-1300, FAX: (760) 560-1301 EMAIL: vccsales@vcclite.com

TITLE: **CLIPLITE HMS 462 ASSEMBLY**

SIZE B	DWG. NO. HMS 462 XXX_E	REV 002
SCALE: 4:1		SHEET 1 OF 4

ITEM NO.	PART NUMBER	DESCRIPTION	QTY.
1	461 XXX	10mm STANDARD THREADED FRESNEL LENS	1
2	HLW 461	10mm LOCKWASHER	1
3	RTN_714	NUT, RETAINING 14MM	1
4	HLS 462 BLK	10MM MOISTURE SEAL	1



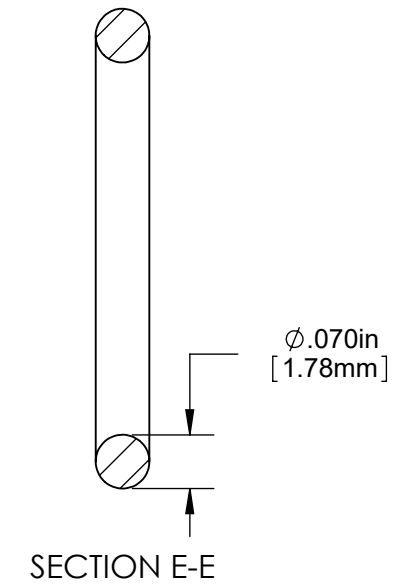
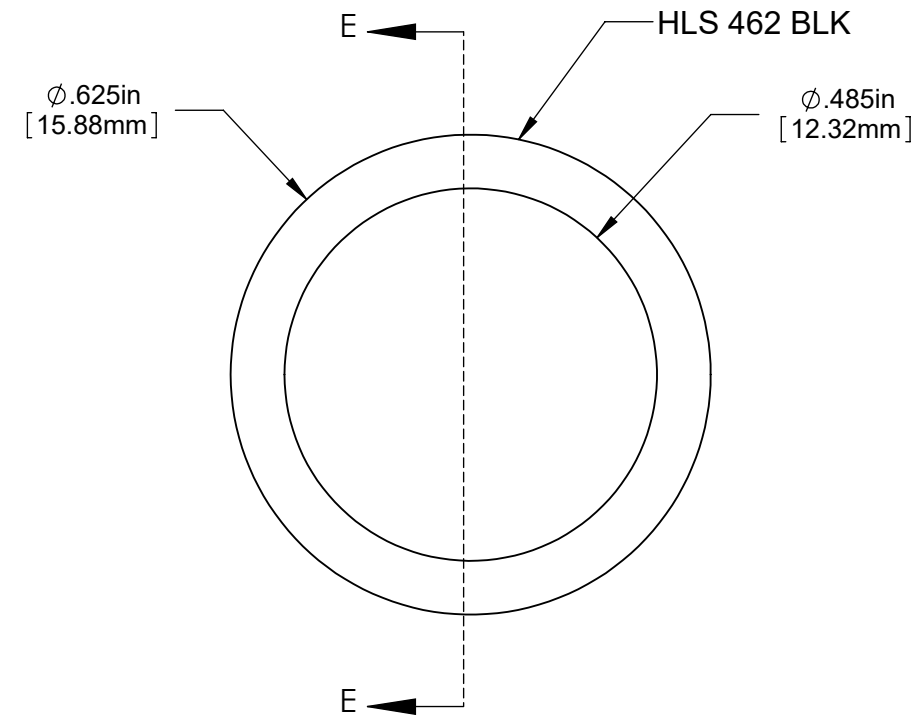
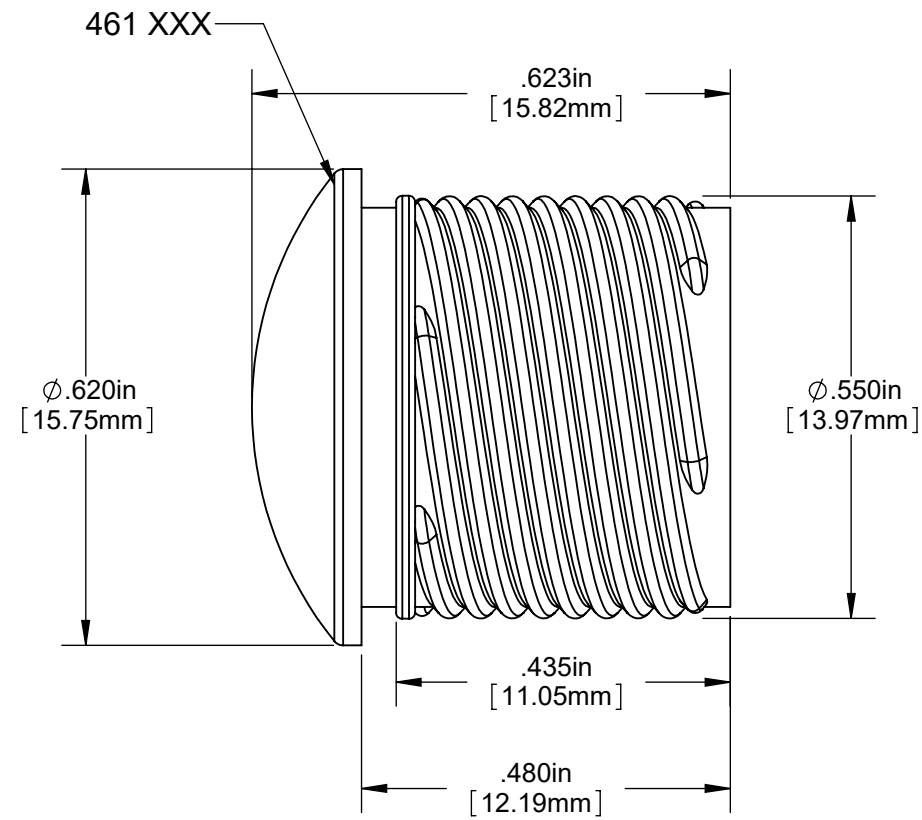
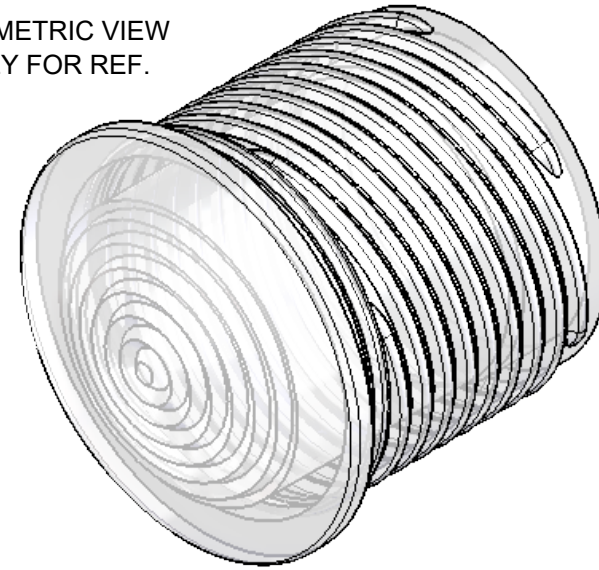
DIMENSION STYLE: INCHES / MM GENERAL TOLERANCES UNLESS OTHERWISE SPECIFIED	
	INCHES MM
.X	± .020 ± .508
.XX	± .010 ± .254
.XXX	± .005 ± .127
ANGLE ± 1°	
BREAK ALL CORNERS AND SHARP EDGES .001 MAX.	
THIRD ANGLE PROJECTION	
<small>PROPRIETARY AND CONFIDENTIAL THE INFORMATION CONTAINED IN THIS DRAWING IS THE SOLE PROPERTY OF VISUAL COMMUNICATIONS COMPANY, INC. ANY REPRODUCTION IN PART OR AS A WHOLE WITHOUT THE WRITTEN PERMISSION OF VISUAL COMMUNICATIONS COMPANY, INC IS PROHIBITED.</small>	

MATERIAL	
SEE NOTES	
FINISH	
SEE NOTES	
APPROVAL	DATE
DRAWN K.Howard	7/7/10
CHECKED DPZ	7/7/10
DO NOT SCALE DRAWING	

OPTOELECTRONICS <small>190 BOSSTICK BLVD. SUITE 101 SAN MARCOS, CA 92069 U.S.A PHONE: (760) 560-1300, FAX: (760) 560-1301 EMAIL: vccsales@vcclite.com</small>		
TITLE: CLIPLITE HMS 462 ASSEMBLY		
SIZE B	DWG. NO. HMS 462 XXX_E	REV 002
SCALE: 4:1		SHEET 2 OF 4

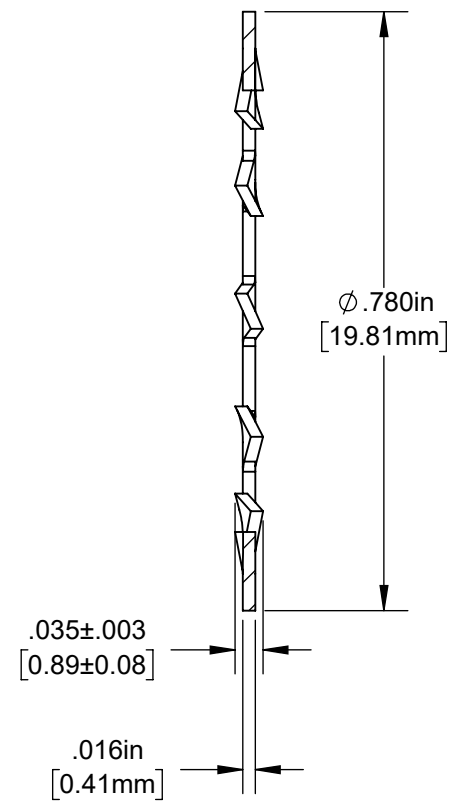
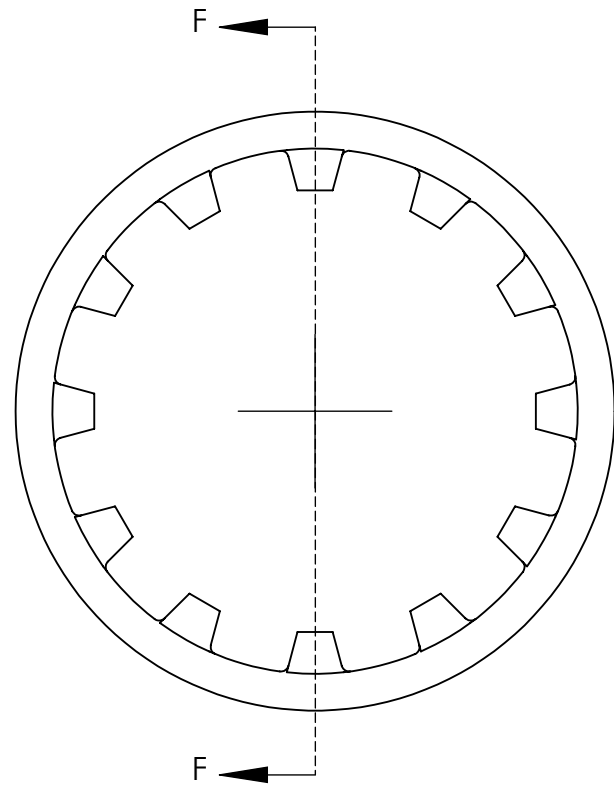
NOTES:
USE FOR REFERENCE ONLY

ISOMETRIC VIEW
 ONLY FOR REF.

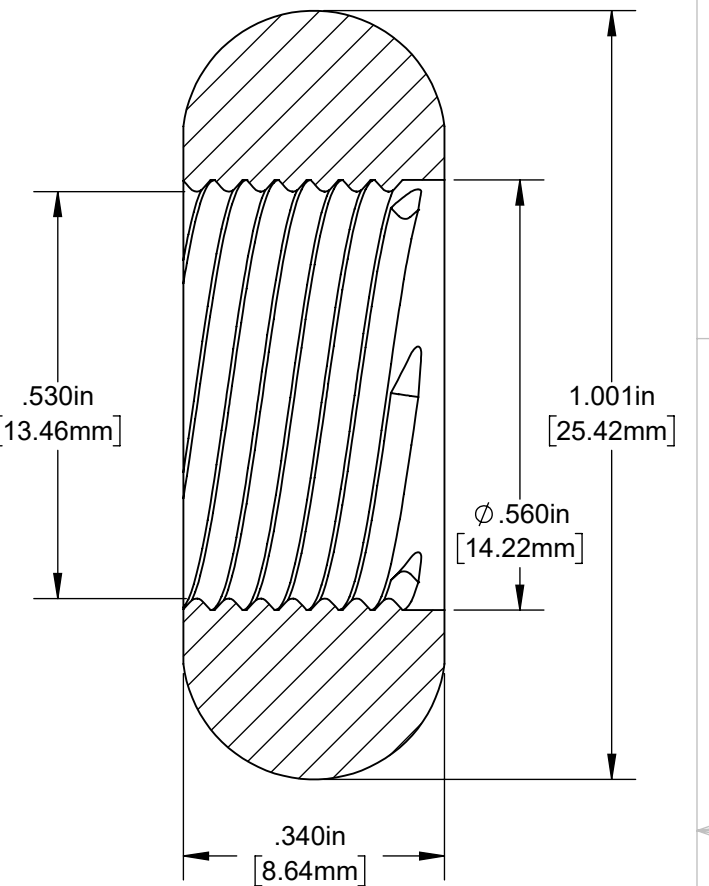
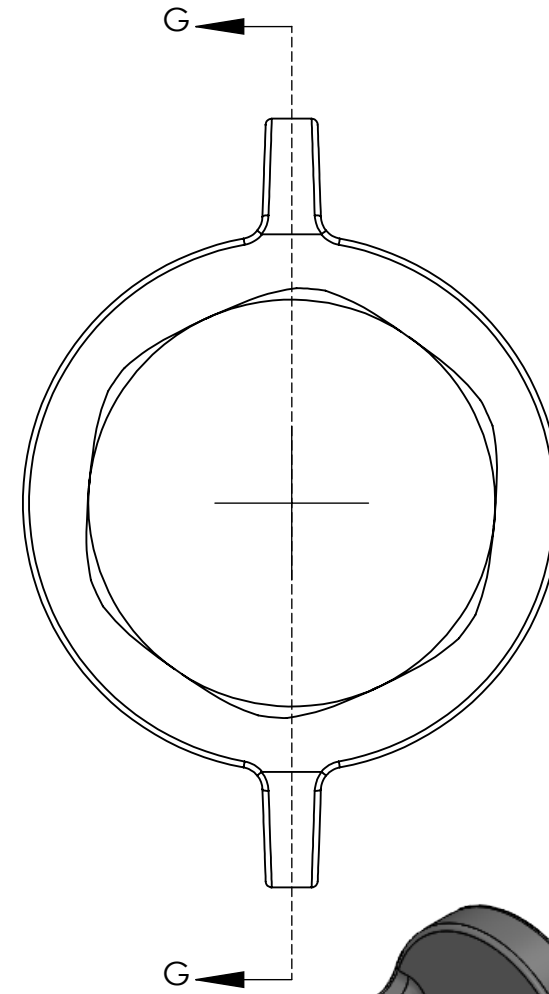


DIMENSION STYLE: INCHES / MM GENERAL TOLERANCES UNLESS OTHERWISE SPECIFIED: <table border="1"> <tr> <th></th> <th>INCHES</th> <th>MM</th> </tr> <tr> <td>.X</td> <td>± .020</td> <td>± .508</td> </tr> <tr> <td>.XX</td> <td>± .010</td> <td>± .254</td> </tr> <tr> <td>.XXX</td> <td>± .005</td> <td>± .127</td> </tr> </table>			INCHES	MM	.X	± .020	± .508	.XX	± .010	± .254	.XXX	± .005	± .127	MATERIAL SEE NOTES		VGG OPTOELECTRONICS 190 BOSSTICK BLVD, SUITE 101 SAN MARCOS, CA 92069 U.S.A PHONE: (760) 560-1300, FAX: (760) 560-1301 EMAIL: vccsales@vccilite.com	
	INCHES	MM															
.X	± .020	± .508															
.XX	± .010	± .254															
.XXX	± .005	± .127															
ANGLE ± 1° BREAK ALL CORNERS AND SHARP EDGES .030 MAX.		FINISH SEE NOTES		TITLE: 10MM STANDARD THREADED FRESNEL LENS W/SEAL													
THIRD ANGLE PROJECTION PROPRIETARY AND CONFIDENTIAL THE INFORMATION CONTAINED IN THIS DRAWING IS THE SOLE PROPERTY OF VISUAL COMMUNICATIONS COMPANY, INC. ANY REPRODUCTION IN PART OR AS A WHOLE WITHOUT THE WRITTEN PERMISSION OF VISUAL COMMUNICATIONS COMPANY, INC IS PROHIBITED.		APPROVAL DRAWN K.Howard 7/7/10 CHECKED DPZ 7/7/10 DO NOT SCALE DRAWING		SIZE DWG. NO. REV B HMS 462 XXX_E 002													
				SCALE: 4:1 SHEET 3 OF 4													

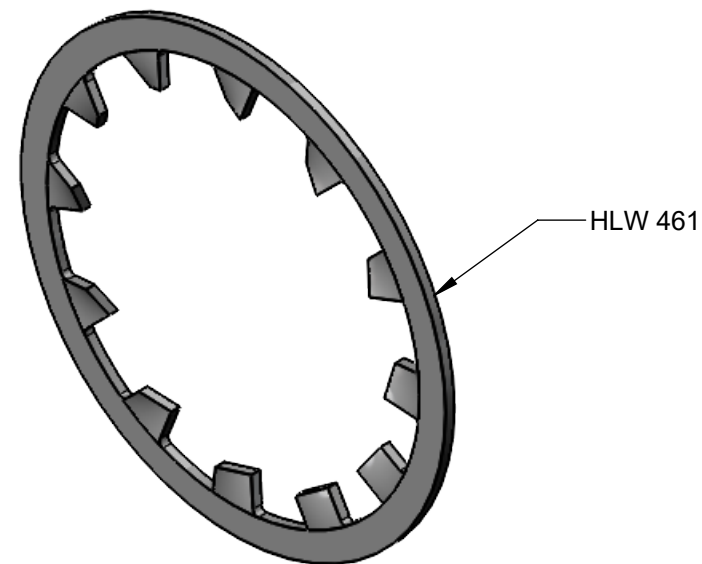
NOTES:
USE FOR REFERENCE ONLY



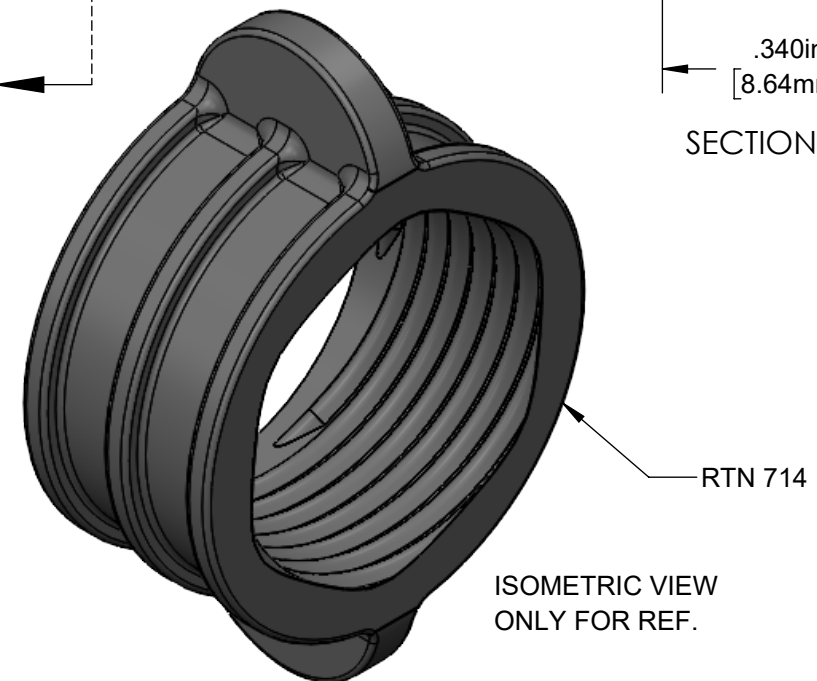
SECTION F-F



SECTION G-G



ISOMETRIC VIEW
 ONLY FOR REF.

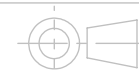


ISOMETRIC VIEW
 ONLY FOR REF.

DIMENSION STYLE: INCHES / MM
 GENERAL TOLERANCES UNLESS
 OTHERWISE SPECIFIED

	INCHES	MM
.X	± .020	± .508
.XX	± .010	± .254
.XXX	± .005	± .127

ANGLE ± 1°
 BREAK ALL CORNERS AND SHARP
 EDGES: .030 MAX



THIRD ANGLE PROJECTION

PROPRIETARY AND CONFIDENTIAL
 THE INFORMATION CONTAINED IN THIS
 DRAWING IS THE SOLE PROPERTY OF
 VISUAL COMMUNICATIONS COMPANY, INC. ANY
 REPRODUCTION IN PART OR AS A WHOLE
 WITHOUT THE WRITTEN PERMISSION OF
 VISUAL COMMUNICATIONS COMPANY, INC IS
 PROHIBITED.

MATERIAL
 SEE NOTES

FINISH
 SEE NOTES

APPROVAL

DATE

DRAWN K.Howard 7/7/10

CHECKED DPZ 7/7/10

DO NOT SCALE DRAWING

VCC OPTOELECTRONICS
 190 BOSSSTICK BLVD, SUITE 101 SAN MARCOS, CA 92069 U.S.A
 PHONE: (760) 560-1300, FAX: (760) 560-1301 EMAIL: vccsales@vcclite.com

TITLE:
**10mm LOCKWASHER
 W/ RETAINING RING NUT**

SIZE B	DWG. NO. HMS 462 XXX_E	REV 002
------------------	----------------------------------	-------------------

SCALE: 4:1 SHEET 4 OF 4