

CMD91-21 Series Surface Mount LED

Surface Mount with Domed Top LEDs with high intensity light output and a clear non-diffused lens.

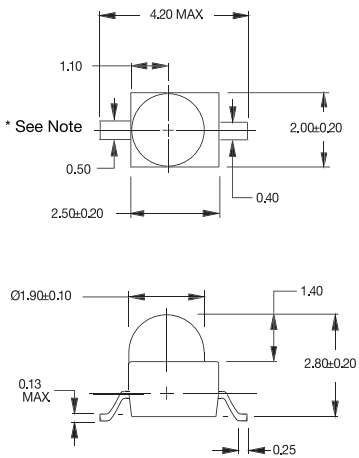


Key features

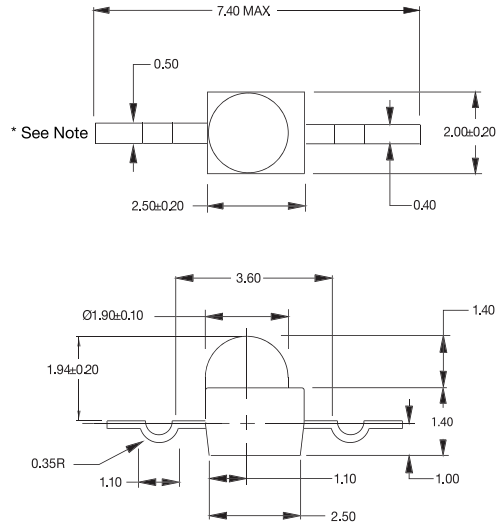
- Surface mount technology
- LED size: 1.9 mm
- Gull Wing (TR7), Yoke (TR9) and Z-Bend (TR10) lead configuration
- Colors available: green, yellow, and red
- Viewing angle: 25°
- Tape and reel packaged for high-speed autoinsertion
- Convection and vapor-phase reflow compatible
- Compact form enables high density placement
- Stringent process controls assure quality
- Extensive qualification testing to meet strictest requirements
- Designed to permit easy post-reflow solder joint inspection
- Consistent high brightness
- Compliant with RoHS and REACH requirements

Product Dimensions

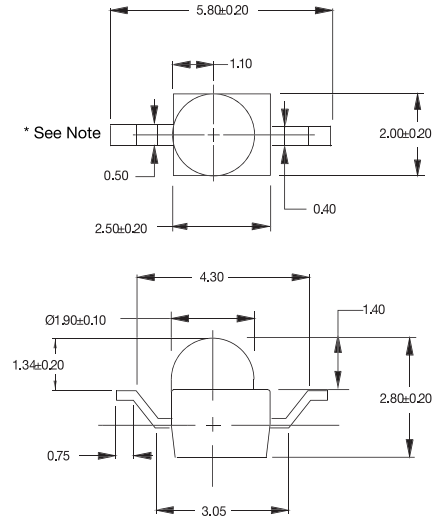
CMD91-21/TR7 - Gull Wing



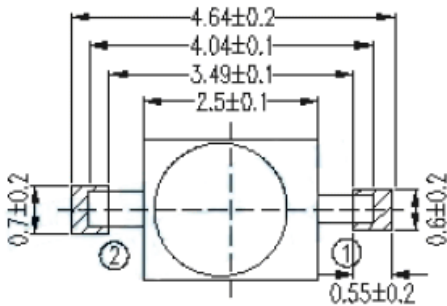
CMD91-21/TR9 - Yoke



CMD91-21/TR10 - Z-Bend



Solder Pad Geometry



Notes:

1. All dimensions are in mm
2. * Cathode for VGC/VYC/VRC Anode for SRC

Product Specifications

Electro-optical Characteristics

Part Number	Emitted Color	Lens Color	Luminous Intensity@20Ma		Forward Voltage		Peak Wavelength (nm)
			Min. (mcd)	Typ. (mcd)	Typ. (V)	Max. (V)	
CMD91-21VGC/TR7/TR9/TR10	Green	Clear	132	198	2.0	2.4	575
CMD91-21VYC/TR7/ - / TR10	Yellow	Clear	18.0	30.0	2.0	2.8	585
CMD91-21VRC/TR7/ - / TR10	H.E. Red	Clear	48.0	80.0	2.0	2.8	640
CMD91-21SRC/TR7	Red	Clear	113.0	170.0	1.7	2.4	660

Absolute Maximum Ratings at Ta= 25°C

Units		Green	H.E. Red	Yellow	Red
mW	Power Dissipation	60	105	105	100
°C	Storage/ Operating Temperature	-40 to +85 / -40 to +100	-40 to +85 / -40 to +100	-40 to +85 / -40 to +100	-40 to +85 / -40 to +100
mA	Peak Forward Current (1µs @ 10% duty cycle)	160	150	150	150
V	Reverse Voltage (IR=100µA)	5.0	4.0	4.0	4.0
Seconds	Lead Solder Time @ 260°C	5	5	5	5
mA	Average Forward Current	25	30	30	30

Compliances and Approvals

