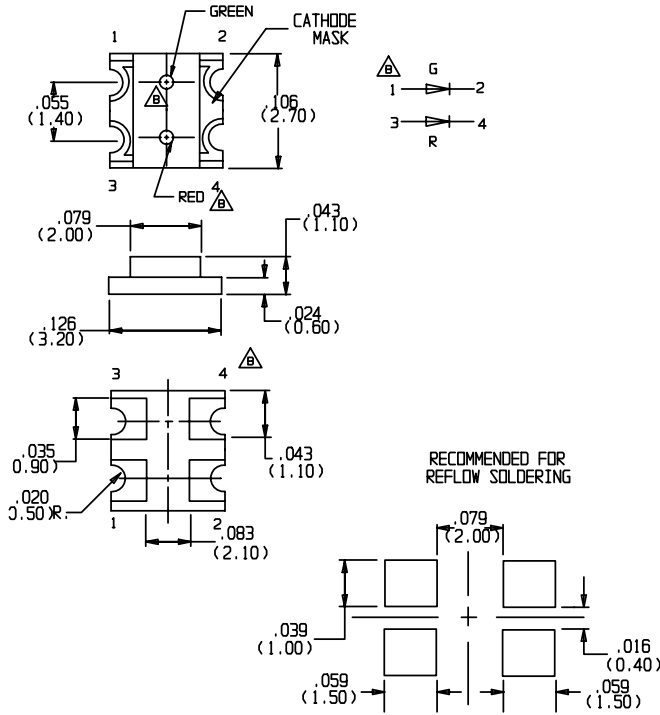
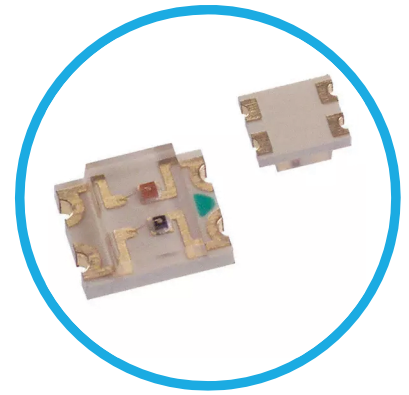




CMD15-22 Series SMT LEDs 1206 Size Bicolor



All dimensions are in inches (mm)

Key Features

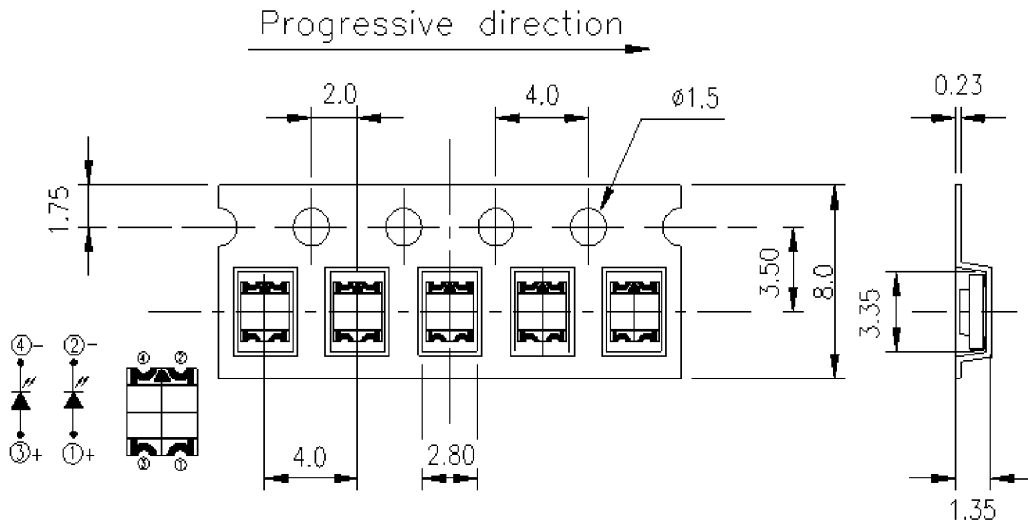
- Tape and reel packaged for high-speed autoinsertion.
- Convection and vapor-phase reflow compatible.
- Compact form enables high density placement.
- Packaged 2000 pieces per reel.
- RoHS Compliant
- Consistent high brightness.
- Integral lensing for narrow angle light dispersion.
- Stringent process controls assure quality.
- Extensive qualification testing to meet strictest requirements.
- Designed to permit easy post-reflow solder joint inspection.

Part Number	Emitted Color	Lens Color	Luminous Intensity Forward Voltage				Test Current (mA)	Peak Wavelength (nm)	Viewing Angle (°)
			Min. (mcd)	Typ. (mcd)	Typ. (V)	Max. (V)			
CMD1522VRVGCTR8	H.E.Red	Clear	3.6	6.0	2.0	2.8	20	640	140
	Green	Clear	6.0	10.0	2.1	2.8	20	570	140
CMD1522SRUGCTR8	Super Red	Clear	25	30	2.0	2.4	20	650	140
	Green	Clear	30	35	2.0	2.4	20	575	140

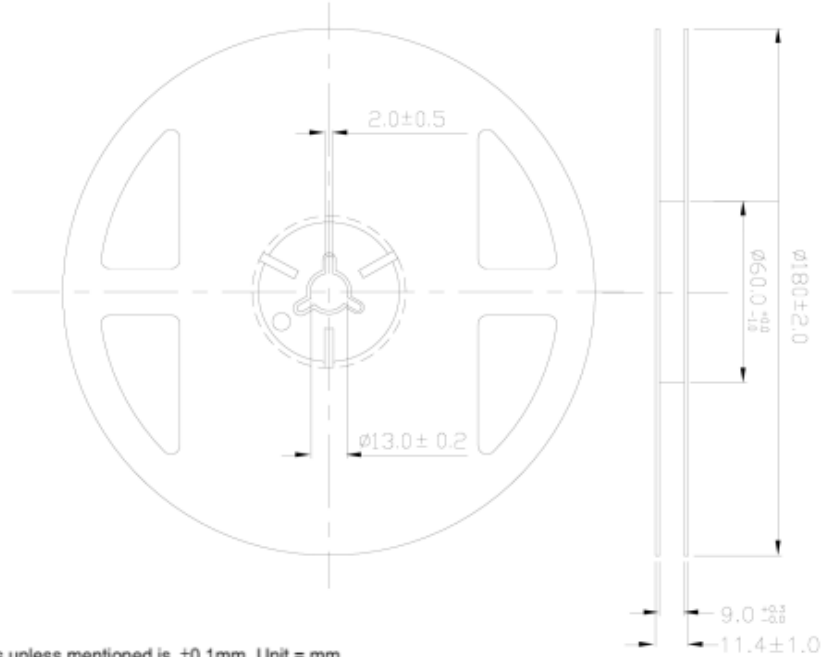
Absolute Maximum Ratings

	Green	H.E.Red	Super Red	Units
Power Dissipation	60	100	60	mW
Storage/Operating Temperature	-40 to +90	-40 to +85	-40 to +90	°C
Peak Forward Current (1μs @ 10% duty cycle)	60	160	60	mA
Reverse Voltage (IR=100μA)	5	4.0	5	V
Lead Solder Time @ 260°C	5	5	5	Seconds
Average Forward Current	25	30	25	mA

Carrier Tape Dimensions



Reel Dimensions



Note: The tolerances unless mentioned is ± 0.1 mm ,Unit = mm