



930 Series Miniature Bayonet Relampable Lampholders Ø 0.691" (17.5mm)



Relampable lampholders accommodate T-3 1/4 and T-2 incandescent lamps and T-3 1/4 neon lamps



Applications

- panel indication
- electrical panels
- entertainment
- industrial
- appliances
- displays

Key Features

- For panel hole diameter: 0.691" (17.5mm)
- Terminations available: solder lug, screw type or wire leads
- Variety of connection options for fast, easy installation.
- Can be mounted in D shaped holes
- 27k OHM resistor available
- Accommodate T-3 1/4 and T-2 incandescent lamps and T-2 neon lamps
- Available in seven lenses colors (red, green, white, blue, clear, amber and yellow).
- Robust lampholder assembly
- Drip proof option
- Finish available (lampholders): e-coat black, bright nickel, satin chrome or polished chrome
- Lead wire options with custom wire length available.
- RoHS and REACH Compliant.
- cULus (9304 and 9305)
- cURus (930W)

Ordering Data

Series Number	Lampholders				Lens Cap																																																																																																											
	Termination	Features	Finish	Resistor	Lens Style	Retainer	Lens Color																																																																																																									
930																																																																																																																
	<table border="1"> <tr><td>Solder Lug (cULus)</td><td>4</td></tr> <tr><td>Screw Type (cULus)</td><td>5</td></tr> <tr><td>Wire Leads (cURus)</td><td>W</td></tr> </table>	Solder Lug (cULus)	4	Screw Type (cULus)	5	Wire Leads (cURus)	W	<table border="1"> <tr><td>None (Standard)</td><td>0</td></tr> <tr><td>Drip Proof¹</td><td>2</td></tr> <tr><td>D Hole Mounting & Drip Proof¹</td><td>3</td></tr> </table>	None (Standard)	0	Drip Proof ¹	2	D Hole Mounting & Drip Proof ¹	3	<table border="1"> <tr><td>E-Coat Black</td><td>4</td></tr> <tr><td>Bright Nickel</td><td>5</td></tr> <tr><td>Satin Chrome</td><td>6</td></tr> <tr><td>Polished Chrome</td><td>7</td></tr> </table>	E-Coat Black	4	Bright Nickel	5	Satin Chrome	6	Polished Chrome	7	<table border="1"> <tr><td>None</td><td>X</td></tr> <tr><td>27K OHM</td><td>R</td></tr> <tr><td>33K OHM</td><td>S</td></tr> <tr><td>56K OHM</td><td>C</td></tr> <tr><td>68K OHM</td><td>F</td></tr> <tr><td>100K OHM</td><td>E</td></tr> </table>	None	X	27K OHM	R	33K OHM	S	56K OHM	C	68K OHM	F	100K OHM	E	<table border="1"> <tr><td colspan="2">Retainer Required</td></tr> <tr><td>Flat^{3,7}</td><td>72 <input type="checkbox"/></td></tr> <tr><td>Flat Drip Proof^{3,7}</td><td>86 <input type="checkbox"/></td></tr> <tr><td>Flat Drip Proof^{4,7}</td><td>87 <input type="checkbox"/></td></tr> <tr><td>Convex^{3,7}</td><td>78 <input type="checkbox"/></td></tr> <tr><td>Convex^{4,7}</td><td>88 <input type="checkbox"/></td></tr> <tr><td>Convex Drip Proof^{3,7}</td><td>79 <input type="checkbox"/></td></tr> <tr><td>Convex Drip Proof^{4,7}</td><td>89 <input type="checkbox"/></td></tr> <tr><td colspan="2">No Retainer Required</td></tr> <tr><td>Dome^{3,7}</td><td>71 <input type="checkbox"/></td></tr> <tr><td>Cylindrical^{3,7}</td><td>73 <input type="checkbox"/></td></tr> <tr><td>Fluted Dome^{5,8}</td><td>74 <input type="checkbox"/></td></tr> <tr><td>Fluted Cylindrical^{3,8}</td><td>76 <input type="checkbox"/></td></tr> <tr><td>No Retainer Required</td><td>0</td></tr> <tr><td>Dripproof (with O-Ring)</td><td>8</td></tr> </table>	Retainer Required		Flat ^{3,7}	72 <input type="checkbox"/>	Flat Drip Proof ^{3,7}	86 <input type="checkbox"/>	Flat Drip Proof ^{4,7}	87 <input type="checkbox"/>	Convex ^{3,7}	78 <input type="checkbox"/>	Convex ^{4,7}	88 <input type="checkbox"/>	Convex Drip Proof ^{3,7}	79 <input type="checkbox"/>	Convex Drip Proof ^{4,7}	89 <input type="checkbox"/>	No Retainer Required		Dome ^{3,7}	71 <input type="checkbox"/>	Cylindrical ^{3,7}	73 <input type="checkbox"/>	Fluted Dome ^{5,8}	74 <input type="checkbox"/>	Fluted Cylindrical ^{3,8}	76 <input type="checkbox"/>	No Retainer Required	0	Dripproof (with O-Ring)	8	<table border="1"> <tr><td colspan="2">Transparent (nondiffusing)</td></tr> <tr><td>AN</td><td>Amber</td></tr> <tr><td>BN</td><td>Blue⁶</td></tr> <tr><td>CN</td><td>Colorless</td></tr> <tr><td>GN</td><td>Green⁶</td></tr> <tr><td>RN</td><td>Red</td></tr> <tr><td>WN</td><td>White</td></tr> <tr><td>YN</td><td>Yellow</td></tr> <tr><td colspan="2">Translucent⁹</td></tr> <tr><td>AT</td><td>Amber</td></tr> <tr><td>BT</td><td>Blue</td></tr> <tr><td>GT</td><td>Green</td></tr> <tr><td>RT</td><td>Red</td></tr> <tr><td>WT</td><td>White</td></tr> <tr><td>YT</td><td>Yellow</td></tr> <tr><td colspan="2">Diffusing (Frosted)⁶</td></tr> <tr><td>AD</td><td>Amber</td></tr> <tr><td>BD</td><td>Blue</td></tr> <tr><td>CD</td><td>Colorless</td></tr> <tr><td>GD</td><td>Green</td></tr> <tr><td>RD</td><td>Red</td></tr> <tr><td>YD</td><td>Yellow</td></tr> </table>	Transparent (nondiffusing)		AN	Amber	BN	Blue ⁶	CN	Colorless	GN	Green ⁶	RN	Red	WN	White	YN	Yellow	Translucent ⁹		AT	Amber	BT	Blue	GT	Green	RT	Red	WT	White	YT	Yellow	Diffusing (Frosted) ⁶		AD	Amber	BD	Blue	CD	Colorless	GD	Green	RD	Red	YD	Yellow
Solder Lug (cULus)	4																																																																																																															
Screw Type (cULus)	5																																																																																																															
Wire Leads (cURus)	W																																																																																																															
None (Standard)	0																																																																																																															
Drip Proof ¹	2																																																																																																															
D Hole Mounting & Drip Proof ¹	3																																																																																																															
E-Coat Black	4																																																																																																															
Bright Nickel	5																																																																																																															
Satin Chrome	6																																																																																																															
Polished Chrome	7																																																																																																															
None	X																																																																																																															
27K OHM	R																																																																																																															
33K OHM	S																																																																																																															
56K OHM	C																																																																																																															
68K OHM	F																																																																																																															
100K OHM	E																																																																																																															
Retainer Required																																																																																																																
Flat ^{3,7}	72 <input type="checkbox"/>																																																																																																															
Flat Drip Proof ^{3,7}	86 <input type="checkbox"/>																																																																																																															
Flat Drip Proof ^{4,7}	87 <input type="checkbox"/>																																																																																																															
Convex ^{3,7}	78 <input type="checkbox"/>																																																																																																															
Convex ^{4,7}	88 <input type="checkbox"/>																																																																																																															
Convex Drip Proof ^{3,7}	79 <input type="checkbox"/>																																																																																																															
Convex Drip Proof ^{4,7}	89 <input type="checkbox"/>																																																																																																															
No Retainer Required																																																																																																																
Dome ^{3,7}	71 <input type="checkbox"/>																																																																																																															
Cylindrical ^{3,7}	73 <input type="checkbox"/>																																																																																																															
Fluted Dome ^{5,8}	74 <input type="checkbox"/>																																																																																																															
Fluted Cylindrical ^{3,8}	76 <input type="checkbox"/>																																																																																																															
No Retainer Required	0																																																																																																															
Dripproof (with O-Ring)	8																																																																																																															
Transparent (nondiffusing)																																																																																																																
AN	Amber																																																																																																															
BN	Blue ⁶																																																																																																															
CN	Colorless																																																																																																															
GN	Green ⁶																																																																																																															
RN	Red																																																																																																															
WN	White																																																																																																															
YN	Yellow																																																																																																															
Translucent ⁹																																																																																																																
AT	Amber																																																																																																															
BT	Blue																																																																																																															
GT	Green																																																																																																															
RT	Red																																																																																																															
WT	White																																																																																																															
YT	Yellow																																																																																																															
Diffusing (Frosted) ⁶																																																																																																																
AD	Amber																																																																																																															
BD	Blue																																																																																																															
CD	Colorless																																																																																																															
GD	Green																																																																																																															
RD	Red																																																																																																															
YD	Yellow																																																																																																															

Notes:

- ¹ These styles supplied with rubber washers for body and lens.
- ² No resistor required with incandescent lamps.
- ³ Nondiffusing and translucent colors only.
- ⁴ Diffusing colors only.
- ⁵ Nondiffusing colors only.
- ⁶ Should not use with neon lamps.
- ⁷ Lens Material: Lexan UL-94 V2
- ⁸ Lens Material: Lexan UL-94 HB
- ⁹ Lampholders without lens are not UL certified.

Lampholders and Lens Caps may be ordered separately or as complete assemblies as shown in the example below

930424X897RD



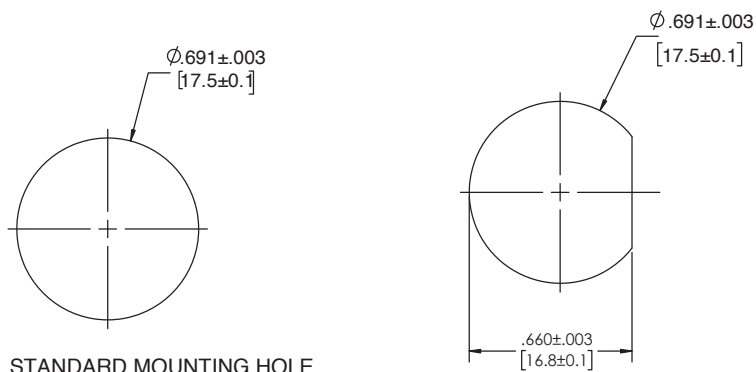
Series Number	Termination	Features	Finish	Resistor	Lens Style	Retainer	Lens Color
930	4 (Solder Lug)	2 (Drip Proof)	4 (E-Coat Black)	X (None)	89 (Convex Drip Proof)	7 (Polished Chrome)	RD (Red Diffusing)

Product Specifications

Materials	
Housing	Brass. E-coat black, bright nickel, polished or satin chrome finishes
Body	High dielectric phenolic
Lockwasher	Phospor bronze. Nickel-plated
Lens	Heat resistant, polycarbonate See notes 7 and 8 on page 2
Hex Nut	Brass. Nickel plated.
Terminals	Solder Lug: Brass, tin plated Screw Type: 4-40 brass, nickel plated binding head screws
Wire Leads	6" Leads, #18 AWG, black & white stranded cooper, PVC insulated, UL/CSA rated 105°C, stripped 1/2". Custom wire options are also available
Retainer	Brass. Zinc plated, bright nickel, polished or satin chrome finishes

Installation Specifications	
Mounting Hole	.651"±.005 (16.5mm±.1)
D- mounting hole (optional)	.651"±.005 (16.5mm±.1) x .691"±.003 (17.6mm±.1)
Maximum Rating	3 Watts, 250 Volts

Mounting Holes - Dimensions



STANDARD MOUNTING HOLE

OPTIONAL "D" MOUNTING HOLE

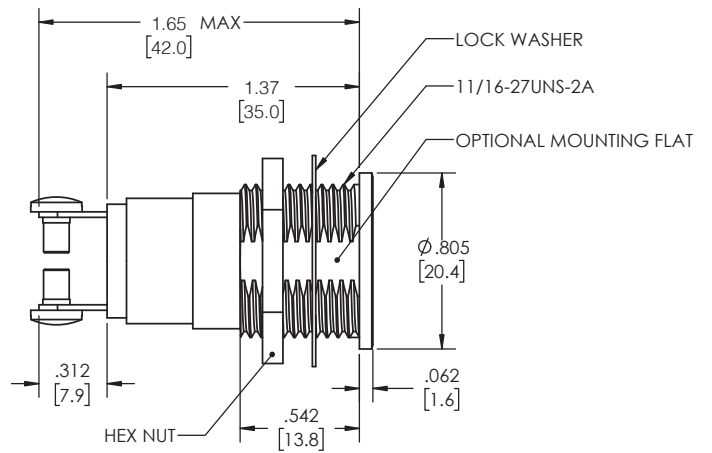
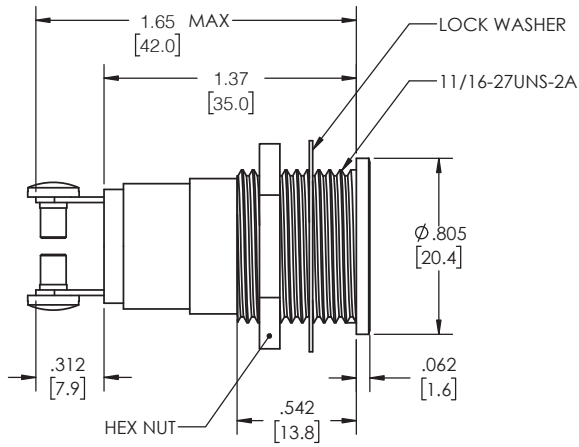
All Dimensions in inches [mm]

Compliance and Approvals

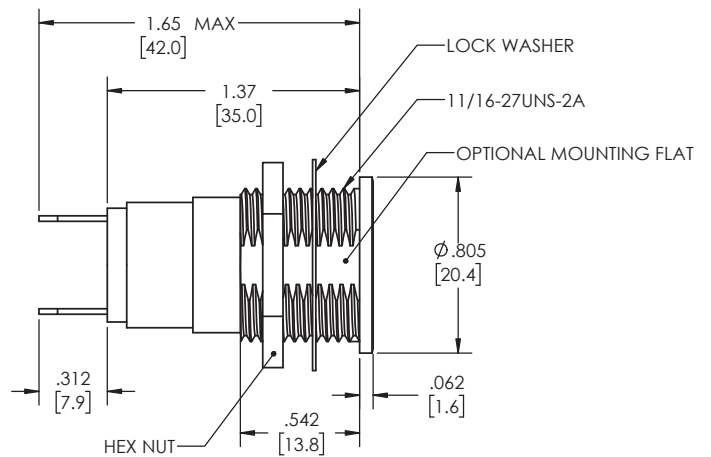
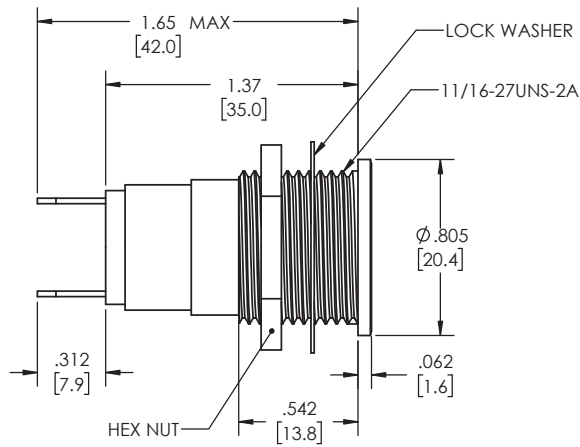


Product Dimensions - Housing and Termination

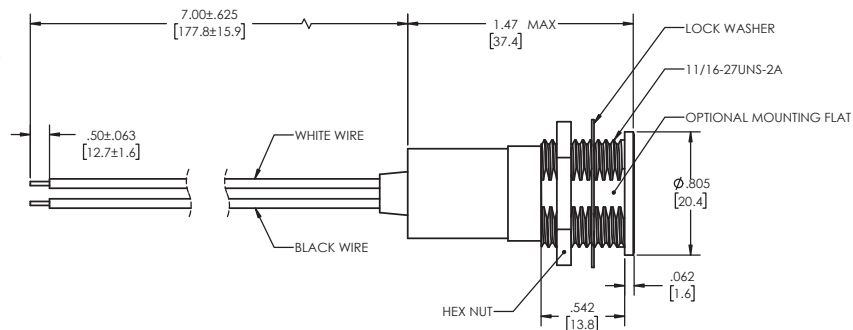
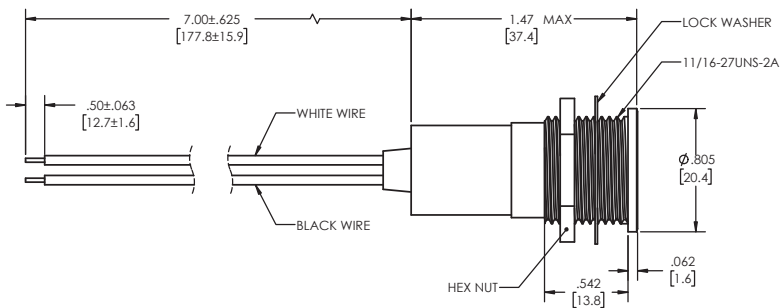
Screw Type



Solder Lug



Wire Leads

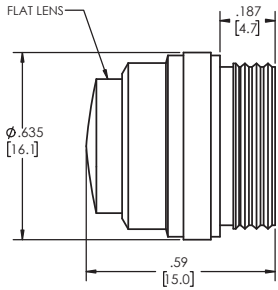


All Dimensions in inches [mm]

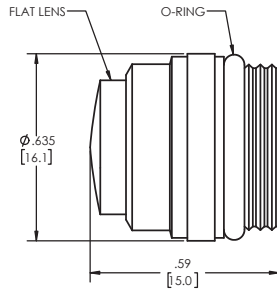
Product Dimensions - Lens Style

Lens Style - with the Required Retainer

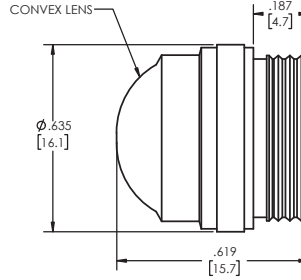
Flat:



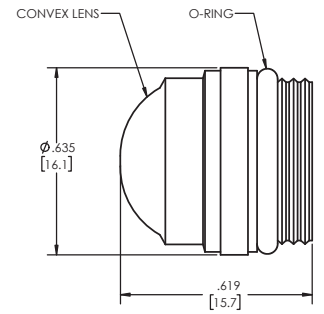
Flat Drip Proof:



Convex:

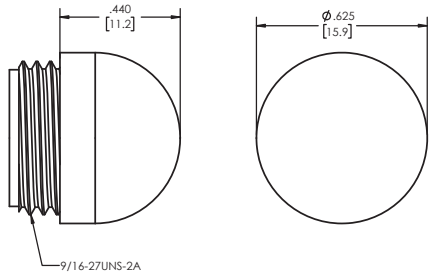


Convex Drip Proof:

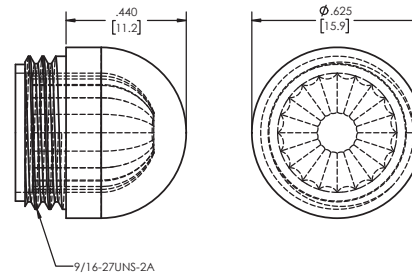


Lens Style - No Retainer Required

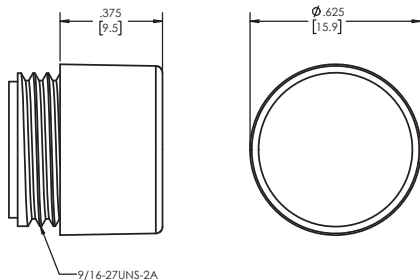
Dome:



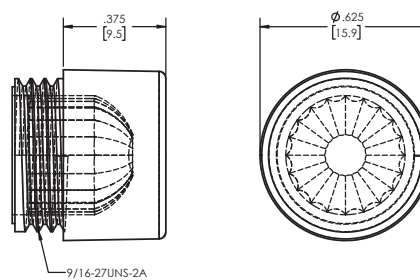
Dome Fluted:



Cylindrical:

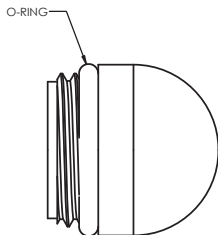


Cylindrical Fluted:

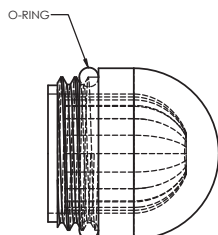


Lens Style - Lampholder features Drip-proof (with O-Ring)

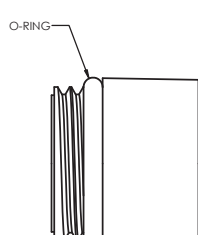
Dome:



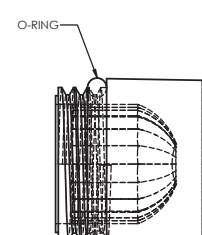
Dome Fluted:



Cylindrical:



Cylindrical Fluted:



All Dimensions in inches [mm]