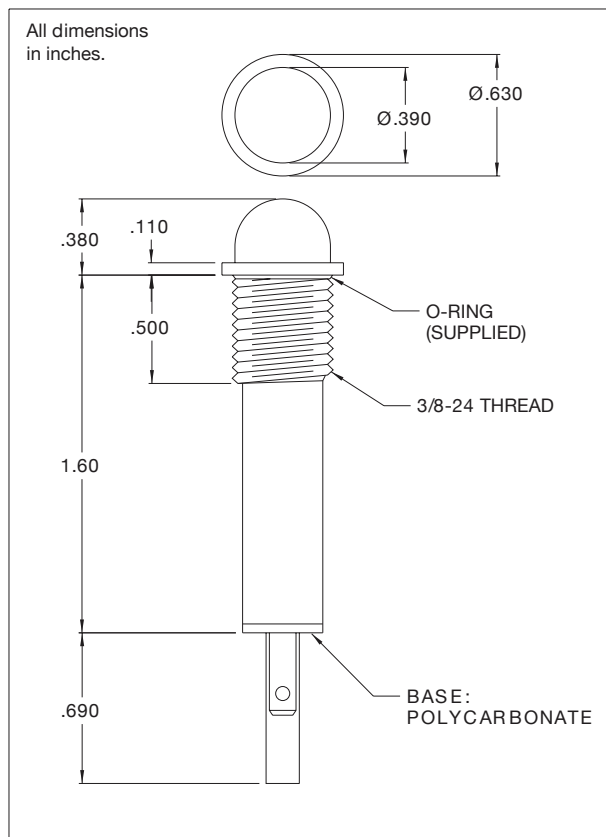




6010QM, 6011QM, 6012QM, 6013QM and 6091QM Series Non-Relampable Oil-Tight Neon or LED Indicator Lights



Solid-state indicator lights complete with built-in current-limiting resistor and rectifier diode.

Mounting: Ø.380" min. hole. Supplied with internal tooth lock washer and hex nut.

Panel Thickness: 0.250"/0.030"

Lens: Polycarbonate

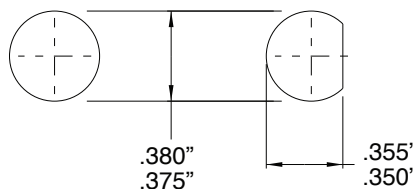
Terminals: Quick-connect, tinned brass .187" x .020"

Bezel: Polished cold rolled steel. For black finish add "X" after the series letter(s) Ex. 6010QMX1 (Red lens with black bezel)

Gaskets: Buna-N

Housing: Black Nylon

Mounting Hole: "D" flat is optional



| Lens Color | Neon | |
|------------|------------------------|------------------------|
| | Model No. (105-125VAC) | Model No. (208-250VAC) |
| Red | 6010QM1 | 6011QM1 |
| Amber | 6010QM3 | 6011QM3 |
| Green | 6012QM5* | - |
| Lamp used | C2A+Resistor | C2A+Resistor |

* Incorporates G2B lamp and resistor. Underwriters Laboratories (UL) File No. E20356

| Lens Color | LED Solid State Indicator | | |
|--------------------------|---------------------------|-------------------|--------------------|
| | Model No. for 12V | Model No. for 24V | Incorporates LED** |
| Red | 6091QM1-12V | 6091QM1-24V | 4304H1 |
| Green | 6091QM5-12V | 6091QM5-24V | 4304H5 |
| Yellow | 6091QM7-12V | 6091QM7-24V | 4304H7 |
| Internal Resistor (ohms) | 390 | 1000 | - |

**Note: Also incorporates IN4004 (400 P.I.V.) rectifier diode. Red lead positive.

Compliance & Approvals

