



387LP Series T-1 3/4 (5mm) Flange Base LED Lamp 28 AC/DC



Key Features

- T-3/4 (5mm) LED size
- Flange Base
- Operating voltage of 28 AC/DC
- Available in five single colors: red, green, amber, blue, white and warm-white
- LED encapsulation is water clear
- Immune to noise current of 2MA
- RoHS and REACH Compliant

Ordering Data

Series

Emitted Color

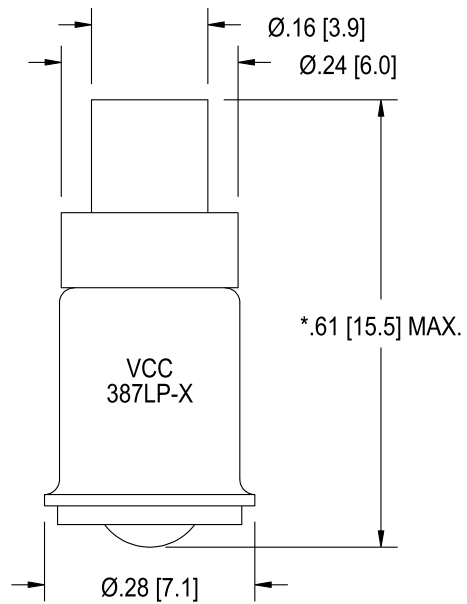
387LP	-R
-------	----

-R	Red
-A	Amber
-G	Green
-B	Blue
-W	White
-L	Warm White

Cross Reference

Incandescent Lamp #	PowerLine Part # with Shunt Resistor	Applied Voltage	Maximum Voltage	FIG #
327	387LP-X	28AC/DC	30	1
376	387LP-X	28AC/DC	30	1
385	387LP-X	28AC/DC	30	1
387	387LP-X	28AC/DC	30	1

Product Dimensions



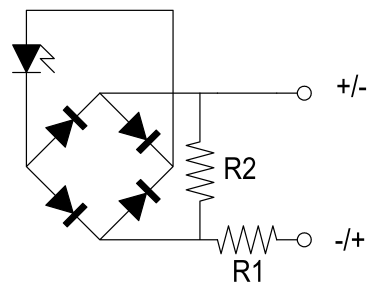
*.64 [16.2] MAX. FOR WARM-WHITE (-L)

Notes:

1. All dimensions are in inches (mm)

Circuit Diagram

125 - NWX



Product Specifications

Electrical-Optical Characteristics @ Ta = 25°C

SYM	Parameter	LED Color						Unit
		Red	Amber	Green	Blue	White	Wrm-White	
Iv	Typ. Luminous Intensity w/o Lens @ If = 20mA	2180	2180	2000	600	1100	1300	mcd
Vo	Operating Voltage	28	28	28	28	28	28	V
If	Typ. Forward Current @ Vf = 28V	14.4~15.4		13.6~14.6				mA
Imx	Max. Forward Current @ Vf = 30V	16.8	16.8	16.3	16.3	16.3	16.3	mA
Vbr	Reverse Breakdown @ Ir = 100uA	-	-	-	-	-	-	V
λpk	Peak Wavelength	634	592	520	465	-	-	nm
λD	Dominant Wavelength	629	590	525	470	-	-	nm

Absolute Max. Ratings Ta = 25°C

Parameter	Value		Unit
	R & A	G, B, W, L	
Power Dissipation	504	489	mW
Derate / °C>Ta	7.6	7.3	mW
Operating Voltage	30	30	V
Operating Temperature	-40<+100	-30<+85	°C
Storage Temperature	-40<+100	-40<+100	°C

Compliances and Approvals

