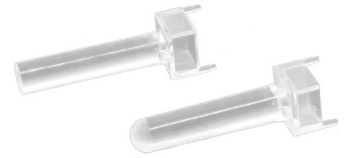
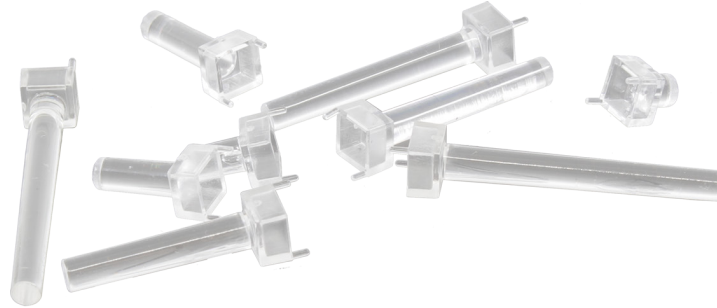


VBL Series

Ø.118" (3mm) Press Fit PCB mounted light pipe for SMD LEDs



VBL Series features vertical board mount LED light pipes available in a range of different lengths with either a flat or a domed top.



Diameter

Ø 0.118" (3mm)

Length

.2" (5.1mm) to 1.0" (25.4mm)

Shape

Flat or Domed Top

Material

Clear polycarbonate UL 94V-0

Compliance

RoHS, REACH

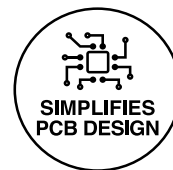
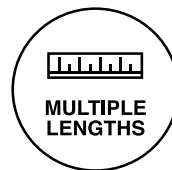
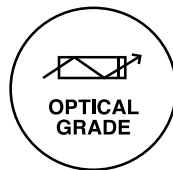
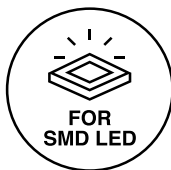
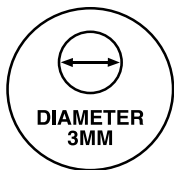
VBL Series features vertical board mount LED light pipes with either a flat or a domed top.

Offered in multiple standard lengths for optimum design flexibility.

The VBL light pipe features press-fit installation into the PCB board which simplifies installation and enables faster assembly in a production environment.

Variations include either a flat or a domed top with a frosted surface that diffuses the light and provides uniform brightness and a soft glow.

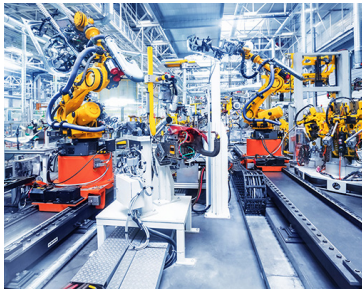
The VBL light pipe flat top sits flush to the panel surface for a sleek appearance.



Product Specification

- Rigid board mount light pipe for surface mount LEDs
- 3mm round lens with either a domed or flat face
- The VBL light pipes are mounted onto the PCB using push-fit lugs in close proximity to the LED
- Protects LED from ESD
- Optical grade polycarbonate for maximum light transmission
- View viewing angle: Flat 80 degree, Dome 20 degree
- Frosted surface diffuses light and provides uniform brightness and a soft glow
- Operating temp: -40°F~239°F (-40°C~115°C)
- Standard lengths from 0.20" to 1.0"
- For custom length contact VCC
- RoHS and REACH Compliant

Applications



Industrial Robots



Data Center Solutions



Transportation Systems



IoT

Part Numbers

Part Number	Shape	Length
VBL3D0200C	Dome	.2" (5.1mm)
VBL3D0250C	Dome	.25" (6.4mm)
VBL3D0300C	Dome	.3" (7.6mm)
VBL3D0350C	Dome	.35" (8.9mm)
VBL3D0400C	Dome	.4" (10.2mm)
VBL3D0450C	Dome	.45" (11.4mm)
VBL3D0500C	Dome	.5" (12.7mm)
VBL3D0550C	Dome	.55" (13.9mm)
VBL3D0600C	Dome	.6" (15.2mm)
VBL3D0700C	Dome	.7" (17.8mm)
VBL3D0800C	Dome	.8" (20.3mm)
VBL3D0900C	Dome	.9" (22.8mm)
VBL3D1000C	Dome	1.0" (25.4mm)

Part Number	Shape	Length
VBL3F0200C	Flat	.2" (5.1mm)
VBL3F0250C	Flat	.25" (6.4mm)
VBL3F0300C	Flat	.3" (7.6mm)
VBL3F0350C	Flat	.35" (8.9mm)
VBL3F0400C	Flat	.4" (10.2mm)
VBL3F0450C	Flat	.45" (11.4mm)
VBL3F0500C	Flat	.5" (12.7mm)
VBL3F0550C	Flat	.55" (13.9mm)
VBL3F0600C	Flat	.6" (15.2mm)
VBL3F0700C	Flat	.7" (17.8mm)
VBL3F0800C	Flat	.8" (20.3mm)
VBL3F0900C	Flat	.9" (22.8mm)
VBL3F1000C	Flat	1.0" (25.4mm)