

# CRM/BRM Series T1 3/4 Rear Mount LED

## Special Features

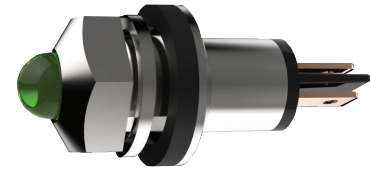
- Rugged watertight construction – sealed to IP67
- Rear mount in .315" (8.00mm) D-shaped and round hole
- Optional internal resistor for 5V-60VDC and 5V-240VAC
- Mil Spec MIL-W22759/33 wire and connector options
- Internally potted-suitable for high vibration applications

## Specifications

- Mounting hole: .315" ± .002" (8.00 ± 0.05 mm) D-shaped and round hole
- Termination: 24AWG UL1061 6.0" (152.4mm) red (anode) and black (cathode) leads stripped .250" (6.35 mm) standard or LED pins or 2.8 x 0.5mm fastons (gold faston = anode and silver faston = cathode)
- Housing: Nickel-plated brass housing or black matte finish
- Panel thickness: .118" ± .006" (3.00 ± 0.15mm) Spacer available for .060" (1.52 mm) thick panel
- Mounting torque: 20 ± 2 in-lb (2.26 ± 0.23 N-mm)

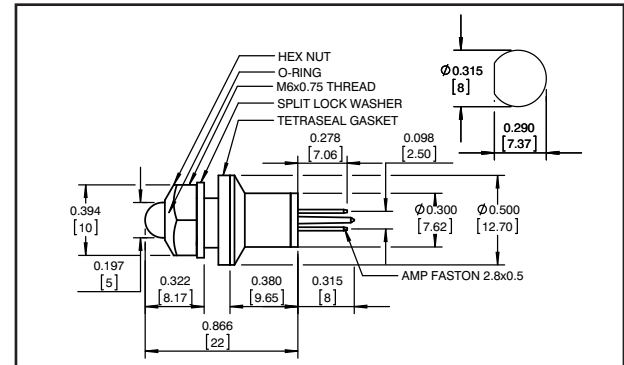
## Electrical and Optical Characteristics (TA = 25°C)

LED Part #	Color	Luminous Intensity (mcd) Typ. @ I <sub>f</sub> (mA)		V <sub>f</sub> Typ. @ I <sub>f</sub> (mA)	Viewing Angle 2 θ ½	Peak Wavelength (nm)
<b>HIGH EFFICIENCY</b>						
3008	Red	11.0	10	1.9	10	635
3019	Green	14.0	10	2.1	10	565
3020	Yellow	8.0	10	2.0	10	583
<b>ULTRA BRIGHT – DAYLIGHT READABLE</b>						
3056	Red	400.0	20	1.9	20	30° 660
3055	Yellow	400.0	20	2.0	20	30° 590
3054	Green	300.0	20	3.2	20	30° 520
3060	Orange	600.0	20	2.1	20	30° 610
<b>BIPOLAR (Recommended for AC Voltages)</b>						
0001	Red	148.0	20	1.85	20	60° 660
0002	Yellow	130.0	20	1.9	20	60° 590
0003	Green	50.0	20	2.1	20	60° 574
<b>BICOLOR (2 leaded)</b>						
9001	Red	30.0	20	2.0	20	60° 627
	Green	30.0	20	2.2	20	
9002	Yellow	30.0	20	2.1	20	60° 590
	Green	30.0	20	2.2	20	
<b>BICOLOR (3 leaded – common cathode)</b>						
0909	Red	697.0	20	1.95	20	60° 650
	Green	198.0	20	2.1	20	
0910	Yellow	198.0	20	2.0	20	60° 590
	Green	168.0	20	2.1	20	
<b>TRICOLOR (4 leaded – common cathode)</b>						
3900	Red	547.0	20	1.9	20	60° 640
	Yellow	397.0	20	2.0	20	
	Green	497.0	20	3.2	20	
<b>BLUE</b>						
3057	Blue	640.0	20	3.3	20	20° 468
<b>WHITE</b>						
3061	White	27000.0	20	3.2	20	15° N/A



5mm Panel Mount LED Assemblies

## Package Dimensions



All dimensions are in inches (mm)

## Resistor Chart

OPERATING SPECIFICATIONS				
Resistor Value Code	Voltage	Current (mA)	Resistor Value (Ohms) Green, Yellow Red, Bicolor LED	Resistor Value (Ohms) Blue, White LED
0000	2	10 or 20	None	Not Available
9900	5	10	332	
9928	5	10		121
9901	12	10	1000	
9902	12	10		715
9903	24	10	2210	
9904	24	10		1910
9905	28	10	2610	
9906	28	10		2320
9907	5	20	150	
9922	5	20		65
9908	12	20	511	
9909	12	20		357
9910	24	20	1100	
9911	24	20		953
9912	48	9	4870	
9913	48	9		4530
9914	60	7	8250	
9915	60	7		7500
0120	120VAC	7	16500	Contact WLI
0240	240VAC	3.5	66400	Contact WLI

Note: Bi-Color, Tri-Color and Full Color not available in AC voltages.

## How To Order

