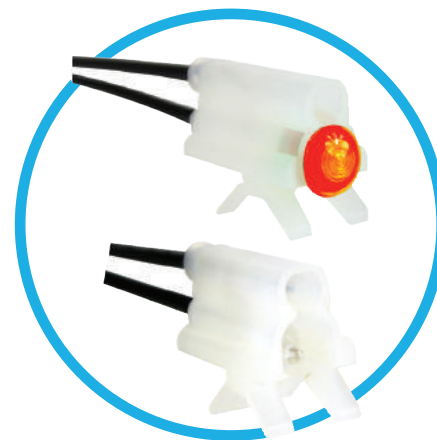
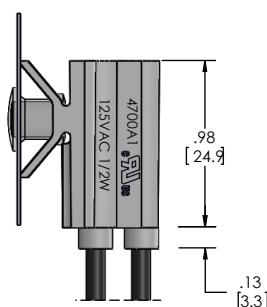
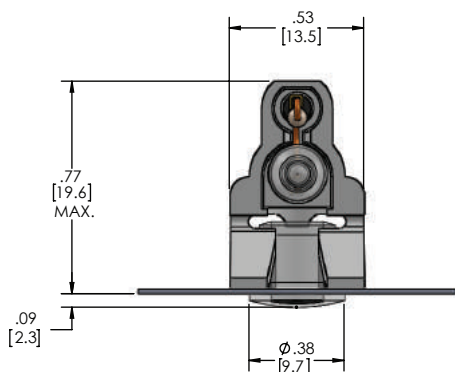




4700A and 4702A Series Non-Relampable Neon Indicator Light



Description and Features

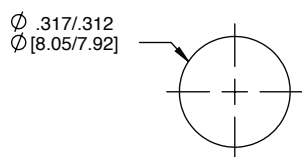


Wire Leads: No. 22 AWG (105°C) 4.40"/4.80" long,
stripped .430"/.570"

Lens: Polycarbonate

Housing: Nylon

Mounting Hole:



PANEL THICKNESS RANGE
.020 TO .125 [.51 TO 3.18]

Voltage 105-125 VAC	LENS COLOR (Model)*	LAMP (Neon)
4700A1	Red (4741)	LN2730
4700A3	Amber (4743)	LN2730
4700A4	White (4744)	LN2730
4702A5	Green (4745)	LN5131
4700A	Lens not included	LN1160

All dimensions in inches [mm]

LAMP ASSEMBLY	PARTS
LN 2730	C2A + 30K RESISTOR
LN5131	G2B + 39K RESISTOR
LN1160	NE-2H + 30K RESISTOR

UL File E20359

*Lens Already Included. For more information about lenses, please refer to VCC website for the most recent datasheet.

Compliance & Approvals

