



SMC 130 Series

0.171" (4.34mm)

Cliplite Open End for 3mm LEDs

SMC 130 series Round Panel Lenses for 3mm LEDs

Key Features

- Mounting hole size: .171" Diameter(4.34mm)
- For panels: .031" (.79mm) to .094" (2.39mm) thick
- Easy assembly - insert lens through panel hole and slide RNG132 retainer (order separately) on the back of lens. PCB mounted LEDs slide into lens when the panel cover is closed or the PCB card is entered into the case.
- In clear and black. For colors, view the SMC_170 series
- Conflict Mineral Free
- Compliant with RoHS and REACH

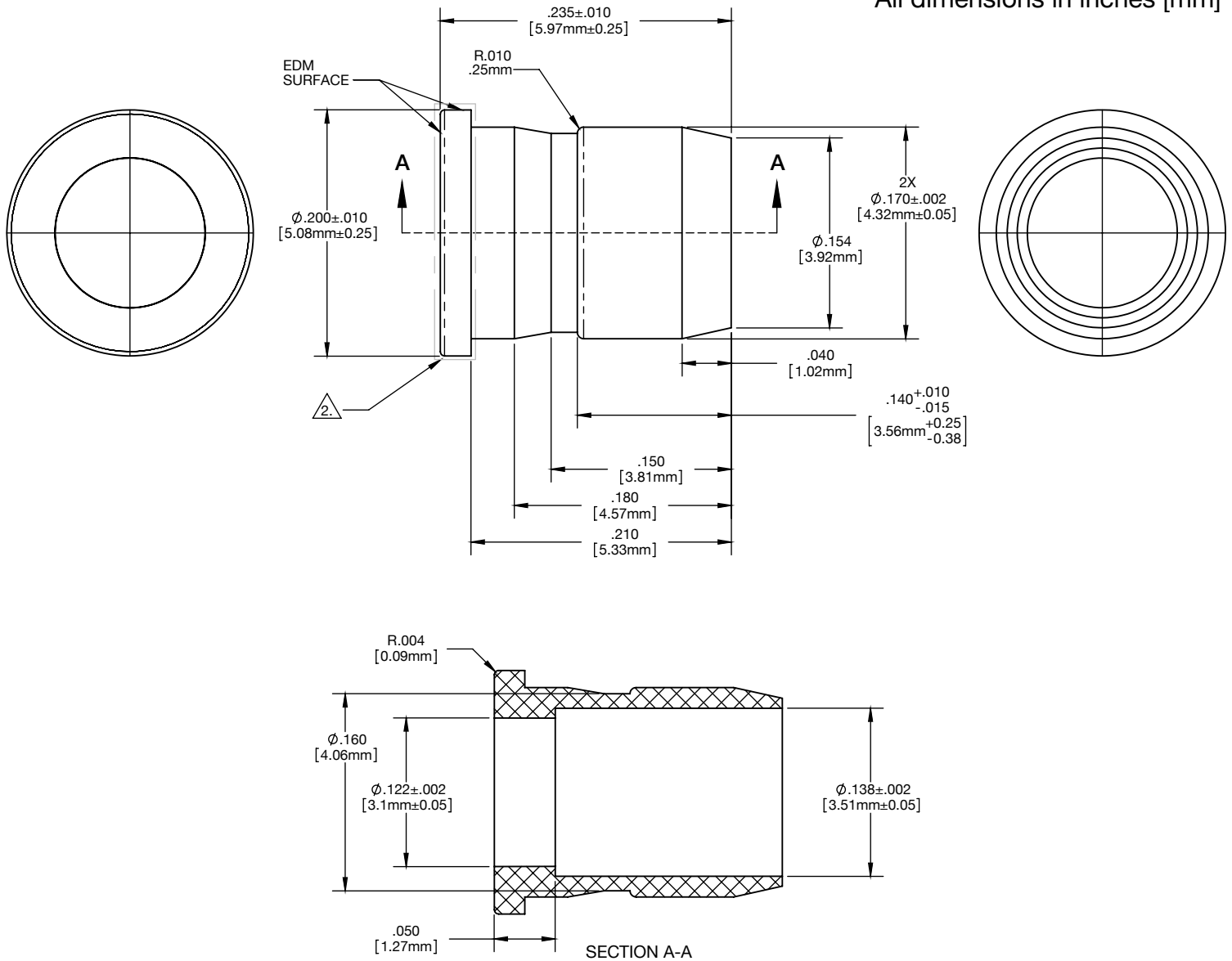
Ordering Data

SMC 130 XXX

Clip Mount Color	
CTP	Clear Transparent
BLK	Black

Product Specifications

All dimensions in inches [mm]



NOTES:

1. Mold using 100% virgin material for clear. Black may be 100% regrind
2. In the region defined, parts shall have a edm finish appearance with no flaws, marks, or gates on interior and exterior surfaces.
3. Flashing shall be removed
4. U.S. and Foreign Pat. Issued & Pend.

Compliances and Approvals

