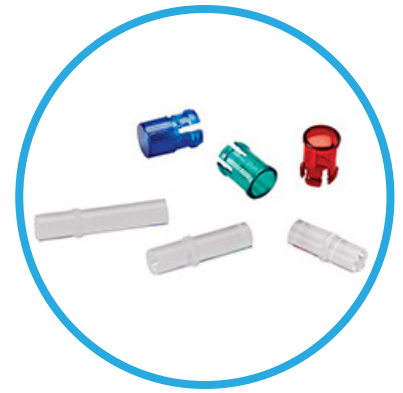


# LCV Series

## Ø.250" (6.35mm) Clear Rigid Panel Mount Light Pipe



5mm Round Light Pipe with 180° viewing angle available in different lengths. Fit into 0.250" (6.35mm) panel hole diameter on 3/8" centers.

### Applications

- Audio/Video
- Dark Room Equipment
- Electrical Panels
- Control Panels
- Industrial
- Data Centers
- IoT
- Studio Control
- Transportation

### Key Features

- For panel hole diameter .250" (6.35mm) hole on 3/8" centers.
- For panels less than 3/16" use SPC\_125 spacer provides a reliable solution for high-vibration environments (SPC\_125 sold separately)
- For use with through-hole and surface mount LEDs
- Available in standard lengths from .360" to 1.360"
- Optical grade acrylic for maximum light transmission (UL94-HB)
- Wide viewing angle at 180°
- Fits CLB\_300 series and SQB\_400 series lens (sold separately)
- Lens lock to light pipe by aligning the tabs with the lens slot
- U.S. & Foreign Pat. issued and pending
- Custom lengths available, contact VCC
- RoHS and REACH Compliant

## Ordering Data

Series		Length Code (Min 036=.360" / Max 136=1.360")		Color	
LCV	-	096		-	CTP
		036	.360" (9.14mm)	CTP	Clear
		056	.560" (14.22mm)		
		076	.760" (19.30mm)		
		096	.960" (24.38mm)		
		116	1.160" (29.46mm)		
		136	1.360" (34.54mm)		

Custom lengths upon request. Contact VCC



Example:

**LCV\_096\_CTP**

LCV Series .960" Length, Clear Light Pipe

### Recommended Retainer and Lenses for LCV Series (sold separately)



SPC\_125



CLB\_300 Series

Available in multiple colors

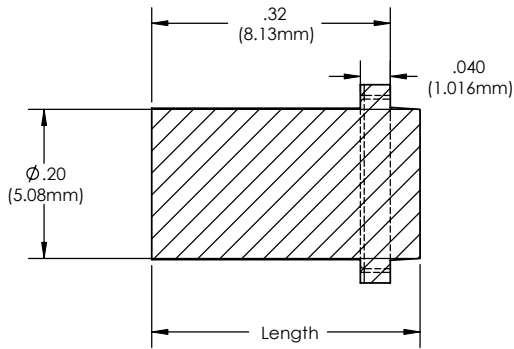
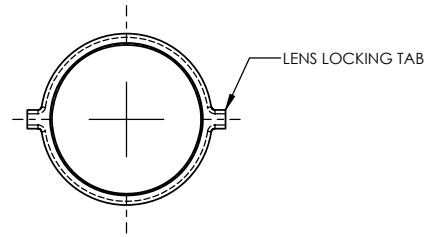
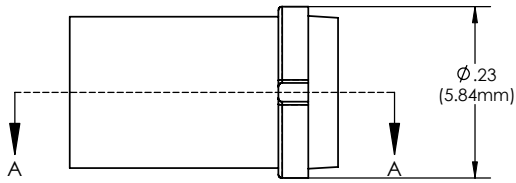


SQB\_400 Series

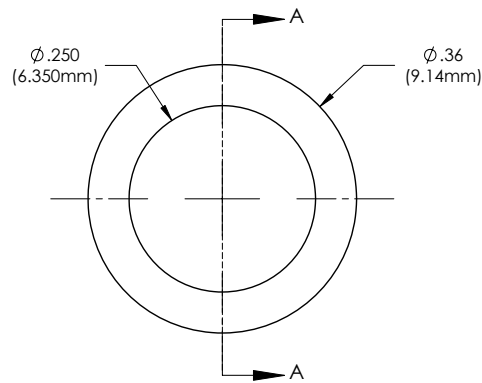
Available in multiple colors

# Product Dimensions

## LCV Series



## SPC\_125 (sold separately)



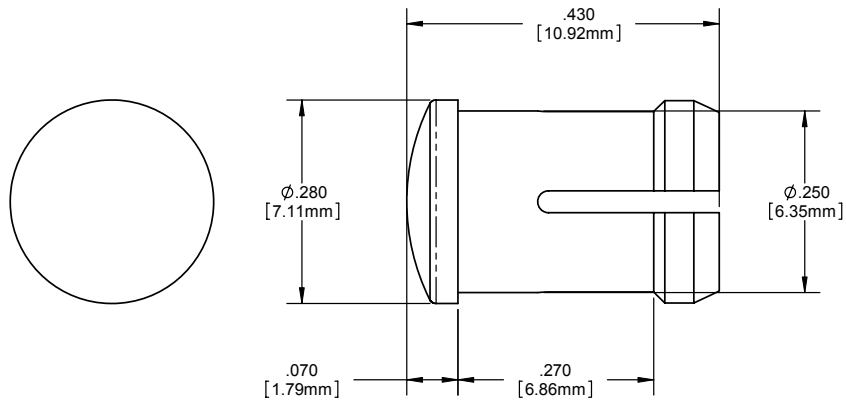
Please see SPC\_125 Datasheet for more details

### Notes:

1. All dimensions are in inches (millimeters)
2. The specifications, characteristics and technical data described in the datasheet are subject to change without prior notice.

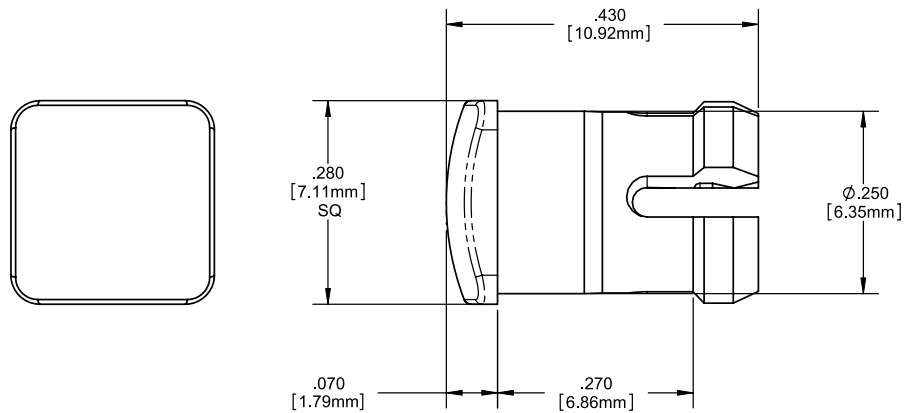
# Product Dimensions

## CLB\_300 Series



Please see CLB\_300 Series Datasheet for more details

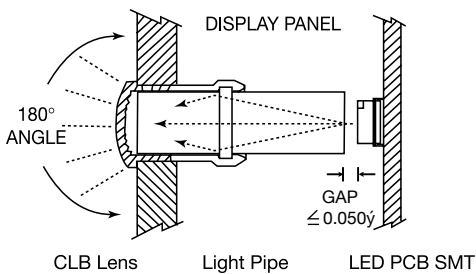
## SQB\_400 Series



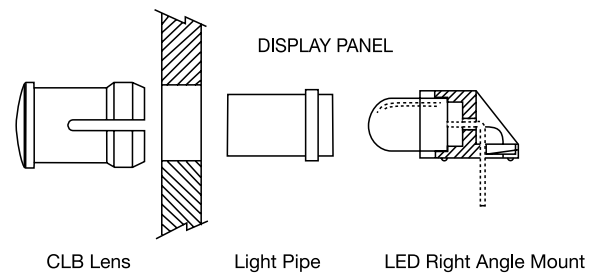
Please see SQB\_400 Series Datasheet for more details

## Application

### Surface Mount LED



### Right Angle LED



### Notes:

1. All dimensions are in inches (millimeters)
2. The specifications, characteristics and technical data described in the datasheet are subject to change without prior notice.

## Product Specifications

Materials	
Body	Clear optical grade acrylic, UL rating 94-HB
SPC_125	UL 94-HB Polypropylene Pro-fax SG702
CLB_300	Polycarbonate, UL 94-V2
SQB_400	Polycarbonate, UL 94-V2

Installation Specifications	
Mounting Hole	.250" (6.35mm) hole on 3/8" centers
Panel Thickness	For CLB_300 and SQB_400: 1/32" to 1/4"
	For panels less than 3/16" use SPC_125

## Compliances and Approvals

