

CNX K Series

Build Your Own Indicator

for Use With T-1 3/4 (5mm) LEDs



CNX K Series features modular panel mount indicator assemblies and mounting hardware and require no tools for assembly



Applications

- Industrial
- Transportation
- Emergency Applications
- Maritime, Oil and Gas Industry
- Automation and Control
- People Movers
- Instrument Panels
- Gaming and Vending Machines
- Outdoor Applications

Key Features

- For panel hole diameter: 0.281" (7.14mm)
- Terminations available: stripped end, locking connector and plain connector
- Eliminates the need for soldering or crimping wires
- Available wire gauge: 24 AWG
- Available in 6 standard wire lengths, from 4" to 24"
- Choice of 2 different wires colors: White/Black or Red/Black
- Panel thickness ranges from 0.030" (0.762mm) to .250" (6.35mm)
- 5mm (T-1 3/4) LED (Flangeless only) needs to be ordered separately
- For additional options please contact our technical sales department
- U.S. and foreign patent issued
- RoHS and REACH Compliant

Ordering Data

Series	LED Termination	Wire Size	Wire Color	Wire Length																								
CNX K	G	4	1	12																								
	<table border="1"> <tr> <td>X</td> <td>Stripped End</td> </tr> <tr> <td>E</td> <td>Single Row Locking Header</td> </tr> <tr> <td>G</td> <td>Single Row Plain Header</td> </tr> </table>	X	Stripped End	E	Single Row Locking Header	G	Single Row Plain Header	<table border="1"> <tr> <td>4</td> <td>24 AWG</td> </tr> </table>	4	24 AWG	<table border="1"> <tr> <td>1</td> <td>White-Black</td> </tr> <tr> <td>2</td> <td>Red-Black</td> </tr> </table>	1	White-Black	2	Red-Black	<table border="1"> <tr> <td>04</td> <td>4in (101.6mm)</td> </tr> <tr> <td>06</td> <td>6in (152.4mm)</td> </tr> <tr> <td>08</td> <td>8in (203.2mm)</td> </tr> <tr> <td>12</td> <td>12in (304.8mm)</td> </tr> <tr> <td>18</td> <td>18in (457.2mm)</td> </tr> <tr> <td>24</td> <td>24in (609.6mm)</td> </tr> </table>	04	4in (101.6mm)	06	6in (152.4mm)	08	8in (203.2mm)	12	12in (304.8mm)	18	18in (457.2mm)	24	24in (609.6mm)
X	Stripped End																											
E	Single Row Locking Header																											
G	Single Row Plain Header																											
4	24 AWG																											
1	White-Black																											
2	Red-Black																											
04	4in (101.6mm)																											
06	6in (152.4mm)																											
08	8in (203.2mm)																											
12	12in (304.8mm)																											
18	18in (457.2mm)																											
24	24in (609.6mm)																											



Example:

CNX_K_G_4_1_12

Single Row Plain Header, 24 AWG Wire Size, White/Black Wire Color, 12 Inch Wire Length

Shown with 5mm (T-1 3/4) Flangeless LED

***Call VCC for additional options**

Terminations



Stripped End (X)

Wire color options



Single Row (E)

Locking Connector
2 Wires Option Only



Single Row (G)

Plain Connector
2 Wires Option Only

Accessories (Order Separately)



5mm (T-1 3/4)

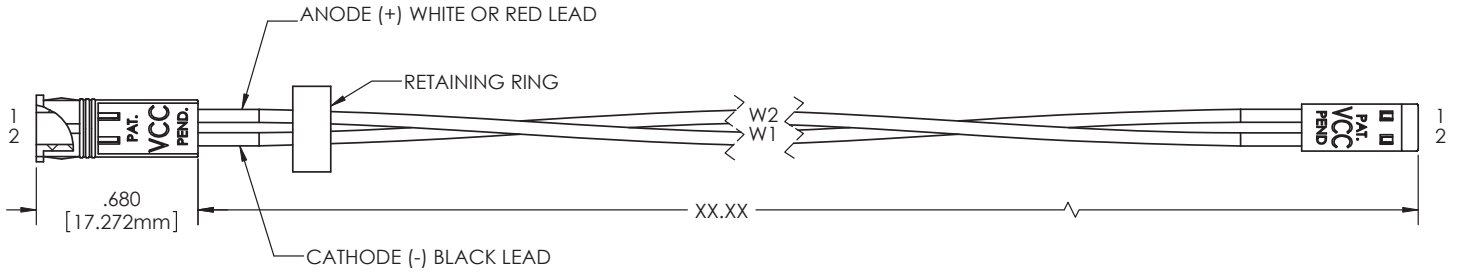
Flangeless Only



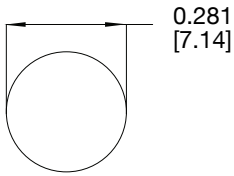
RNG 242

Retainer Ring Option
RNG_242

Product Dimensions



Recommended Mounting Hole



Notes:

1. All dimensions are in inches [millimeters]
2. Tolerance is $\pm .500$ [12.7] unless otherwise noted.
3. XX.XX refer to wire length
4. The specifications, characteristics and technical data described in the datasheet are subject to change without prior notice.

Product Specifications

Materials	
Panel Connector Socket	Polypropylene, UL 94-HB
Head Connector	Polyester, UL 94-V0
Terminals	Phosphor Bronze, Tin Plate
Wire	24 AWG 1007/1569

Installation Specifications	
Mounting Hole	0.281" (7.14mm)
Panel Thickness	.030" (.762mm) Min - .250" (6.35mm) Max Use RNG 242 retainer ring when additional security is required
LED Lead Length	5mm Flangeless LED .250" (6.35mm)

Compliances and Approvals

