



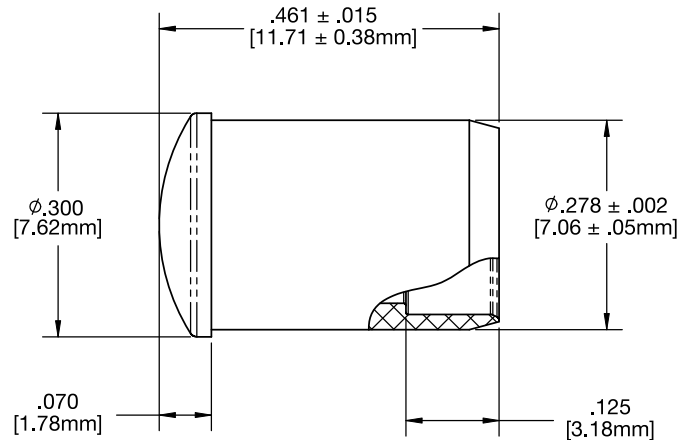
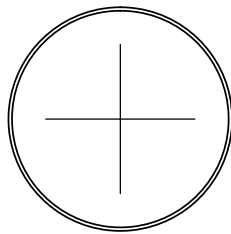
# CML\_325\_CTP

## 5mm Round Fresnel Low Profile Clear Lens

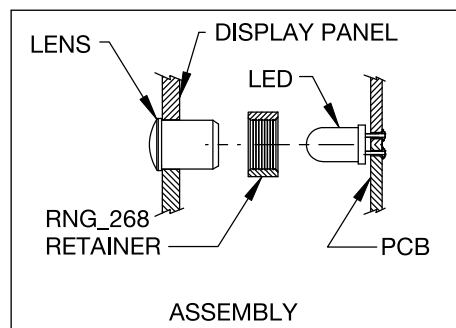
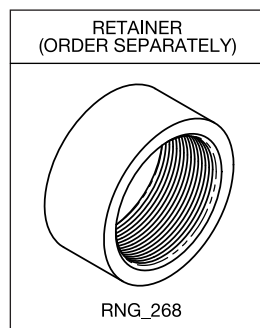


### Notes

- **Mounting:** Mounts in a  $\varnothing .281" \pm .002$  [ $\varnothing 7.13\text{mm} \pm .05$ ] panel hole on  $.375"$  [ $9.5\text{mm}$ ] centers. Panel thickness  $.031"$  [ $0.8\text{mm}$ ] to  $.250"$  [ $6.35\text{mm}$ ]. Panel hole should be deburred, but not chamfered.
- **Assembly:** Insert lens through panel hole, slide RNG\_268 retainer on back of lens. PCB mounted LEDs slide into lens when the panel cover is closed or the PCB card is inserted into the case.
- **Material:** Polycarbonate, UL 94-V2
- **Color:** Clear Transparent



Ordering Code: CML\_325\_CTP



UNLESS OTHERWISE SPECIFIED, DIMENSIONS ARE IN INCHES [MM]

	Inches	mm
.X	$\pm .020$	$\pm .508$
.XX	$\pm .010$	$\pm .254$
.XXX	$\pm .005$	$\pm .127$

Angle  $\pm 1'$

Third Angle Projection