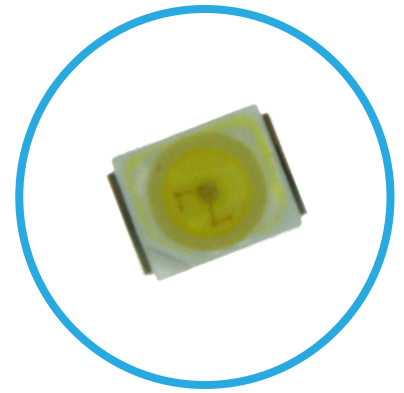


CMD67-22 Series Surface Mount LEDs

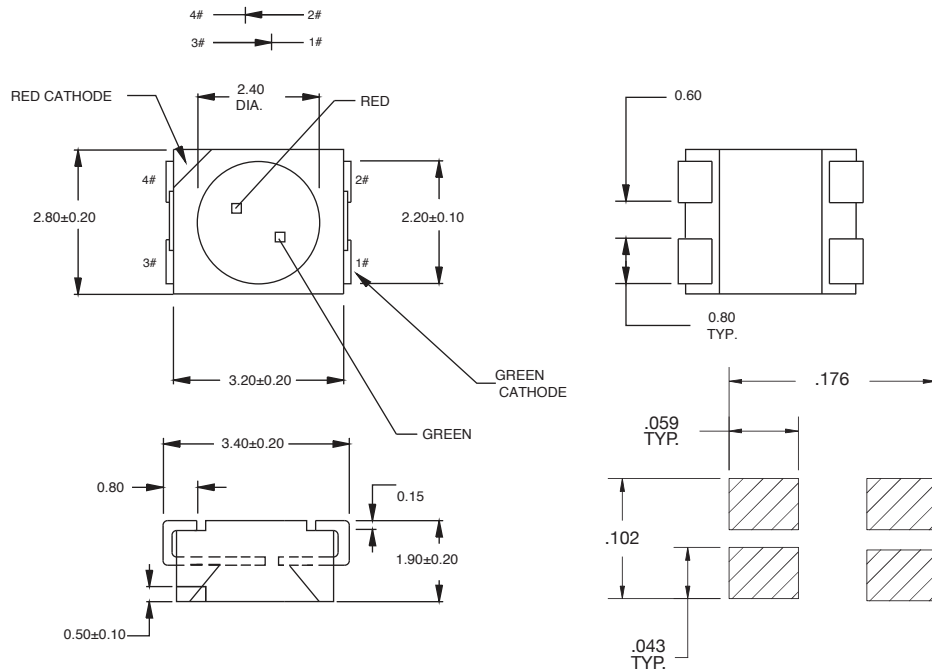
Leading Edge LED Optoelectronic Performance



Key Features

- Tape and reel packaged for high-speed autoinsertion
- Convection and vapor-phase reflow compatible
- Compact form enables high density placement
- Packaged 2000 pieces per reel
- Consistent high brightness
- Integral lensing for narrow angle light dispersion
- Stringent process controls assure quality
- Extensive qualification testing to meet strictest requirements
- Designed to permit easy post-reflow solder joint inspection

Product Dimensions



Notes:

All dimensions are in mm

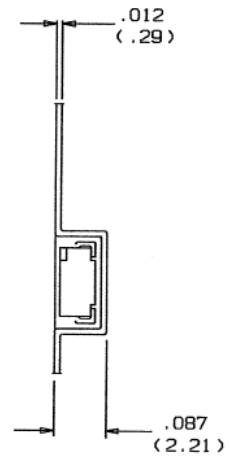
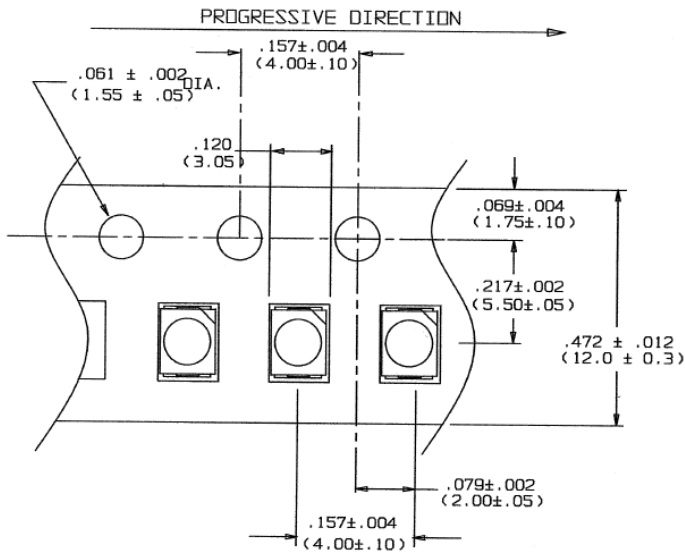
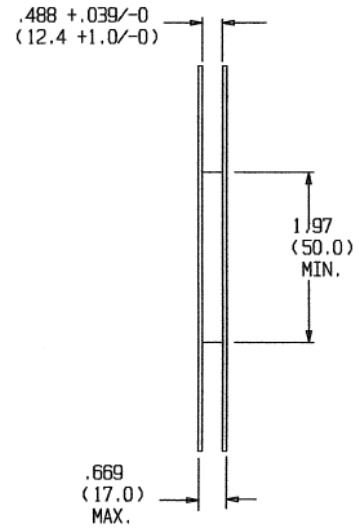
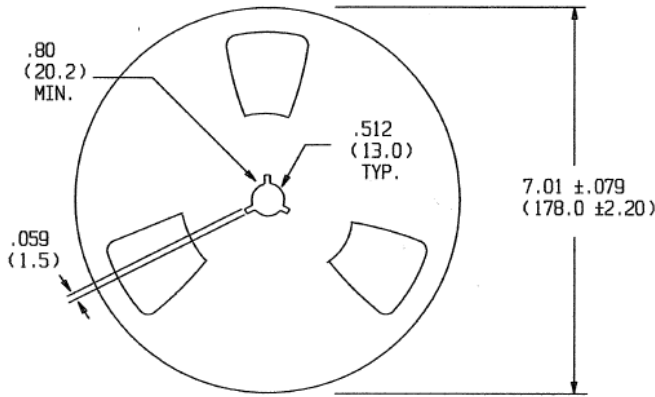
Electro-Optical Characteristics and Ratings

Part Number	CMD67-VRVGCTR8		CMD6722VRVGCTR8	
	H.E. Red	Green	Super Red	Green
Output Color	H.E. Red	Green	Super Red	Green
Package Color	Clear	Clear	Clear	Clear
Test Current (mA)	20	20	20	20
Forward Voltage Min. (V)	1.7	1.7	-	-
Forward Voltage Typ. (V)	-	-	1.7	2.1
Forward Voltage Max. (V)	2.4	2.4	2.4	2.4
Luminous Intensity Min. (mcd)	7.2	11.5	19.3	15.0
Luminous Intensity Typ. (mcd)	-	-	32.2	25.1
Luminous Intensity Max. (mcd)	28.5	45	-	-
Peak Wavelength (nm)	640	570	660	570
Viewing Angle 20 1/2 (degrees)	120	120	120	120
Power Dissipation (mW)	100	100	110	100
Operating Temperature (°C)	-40 to +85	-40 to +85	-40 to +85	-40 to +85
Storage Temperature (°C)	-40 to +85	-40 to +85	-40 to +85	-40 to +85
Peak Forward Current Max. (1µs @ 10% duty cycle) (mA)	60	60	80	60
Reverse Voltage (IR=100µA) (V)	5.0	5.0	5.0	5.0
Lead Solder Time @ 260°C	5	5	5	5

Tape and Reel Dimensions

NOTES:

1. QUANTITY OF LED'S PER REEL: 2000 PIECES
2. LED'S TAPED AND REELED AS PER EIA SPEC 481-1-A.



LED'S TAPED AND REELED AS PER EIA SPEC 481-1-A

Compliances and Approvals

