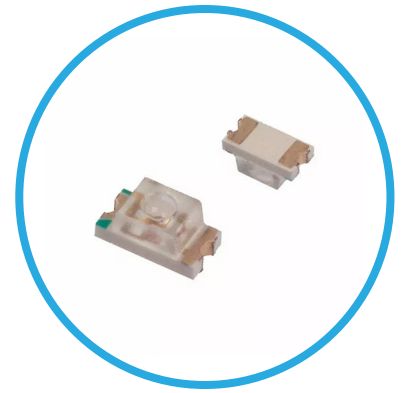


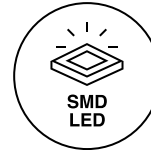
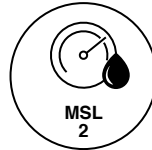
# CMD11-21 Series

## 1206 Package Size

### Surface Mount Technology LED



SMD LED with clear non-diffused lens. Available in multiple single color options and a 20 degree viewing angle.



#### Application

- Wearable and Portable Devices
- Automotive Features
- Navigations Systems
- Home and Smart Appliance
- Backlit Keypads
- Medical Devices
- Health Care Application
- Industrial Control Systems
- Status Indicator

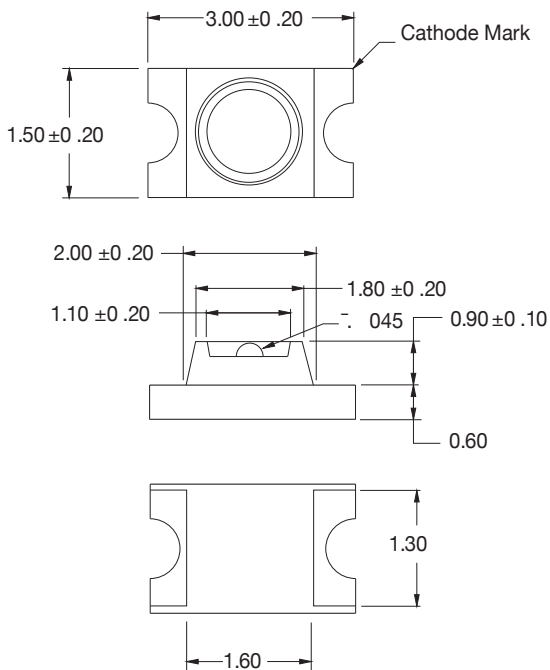
#### Key Features

- Surface mount technology
- Tape and reel packaged for high-speed auto insertion
- Convection and vapor-phase reflow compatible
- Compact form enables high density placement
- Viewing angle: 20°
- Packaged 3000 pieces per reel
- Leading edge LED optoelectronic performance
- Consistent high brightness
- Integral lensing for narrow angle light dispersion
- Exceptional reliability
- Stringent process controls assure quality
- Extensive qualification testing to meet strictest requirements
- Designed to permit easy post-reflow solder joint inspection
- MSL Rating 2
- For custom LED color contact VCC
- RoHS and REACH Compliant

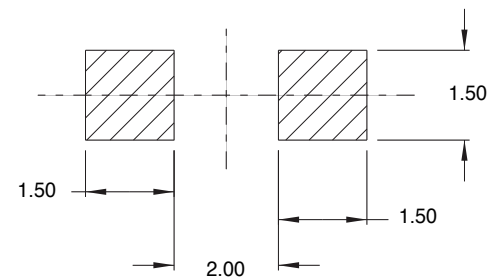
## Ordering Data

Series	Emitted Color/Lens Color
CMD11-21	VGC/TR8
	VGC/TR8 Green/Clear
	VYC/TR8 Yellow/Clear
	VRC/TR8 Red/Clear
	SRC/TR8 Super Red/Clear

## Product Dimensions



## Recommended Soldering Pattern



### Notes:

1. All dimensions are in mm
2. The specifications, characteristics and technical data described in the datasheet are subject to change without prior notice.

## Product Specifications

### Electrical-Optical Characteristics and Ratings

PartNumber	CMD11-21VGC/TR8	CMD11-21VYC/TR8	CMD11-21VRC/TR8	CMD11-21SRC/TR8
Output Color	Green	Yellow	Red	Red
Package Type	Single	Single	Single	Single
Package Color	Clear	Clear	Clear	Clear
TestCurrent (mA)	20	20	20	20
Forward Voltage Typ. (V)	2.1	2.0	2.0	1.7
Forward Voltage Max. (V)	2.8	2.8	2.8	2.4
Luminous Intensity Min. (mcd)	3.0	3.0	3.0	30.0
Luminous Intensity Typ. (mcd)	7.5	6.0	6.0	51.0
Luminous Intensity Max. (mcd)	-	-	-	-
Peak Wavelength (nm)	570	585	640	660
Viewing Angle 20 1/2 (degrees)	20	20	20	20
Power Dissipation (mW)	105	70	100	100
Operating Temperature (°C)	-30 to +90	-30 to +90	-30 to +90	-30 to +90
Storage Temperature (°C)	-30 to +90	-30 to +90	-30 to +90	-30 to +90
PeakForwardCurrentMax. (1µs@10%dutycycle) (mA)	150	150	150	150
ReverseVoltage(IR=100µA) (V) 5.05.05.05.0	5.0	5.0	5.0	5.0
Lead Solder Time @ 260°C	5	5	5	5

## Compliances and Approvals

