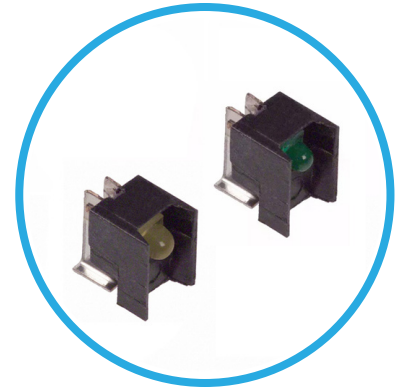




6200T Series Sub Miniature Right Angle SMD LED Circuit Board Indicator



Available in different colors with wide viewing angle.
Uniform appearance and is ideal for backlighting applications.

Key Features

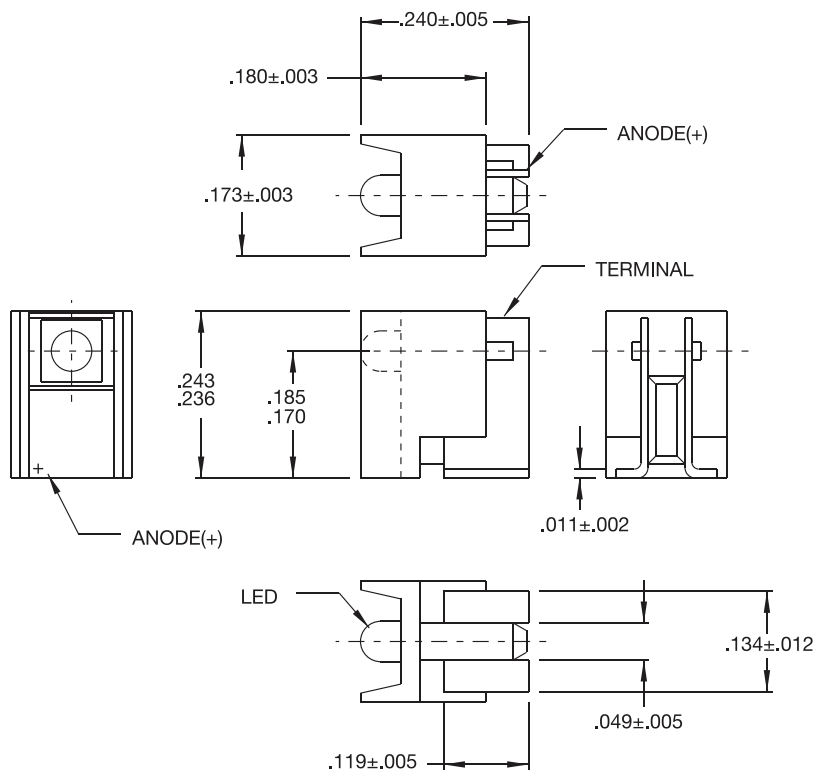
- Colors available: green and yellow
- Tape and reel packaged for high-speed pick-and-place installation
- Packaged 1000 pieces per reel
- Convection and vapor-phase reflow compatible
- Compact form enables high density placement
- Ideal for backlighting applications
- Wide viewing angle
- Direct-view optics provide smooth uniform appearance
- High output
- Low current (2mA)
- Built-in resistor for 5V and 5V low current
- 100K+ hour MTBF
- Easy post-reflow solder joint inspection
- No adhesives
- UL94V-0 rated housing material of black PPA
- RoHS and REACH Compliant

Product Specifications

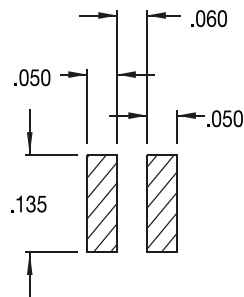
Electro-optical Characteristics

Part Number	Color	Lens Color	Rated Current (mA)	Luminous Intensity Typ. (mcd)	Forward Voltage Typ. (V)	Forward Voltage Max. (V)	Peak Wavelength (nm)
6200T5LC	Green	Green	2.0	.6	1.8	2.2	565
6200T7LC	Yellow	Yellow	2.0	.6	1.9	2.7	583

Product Dimensions



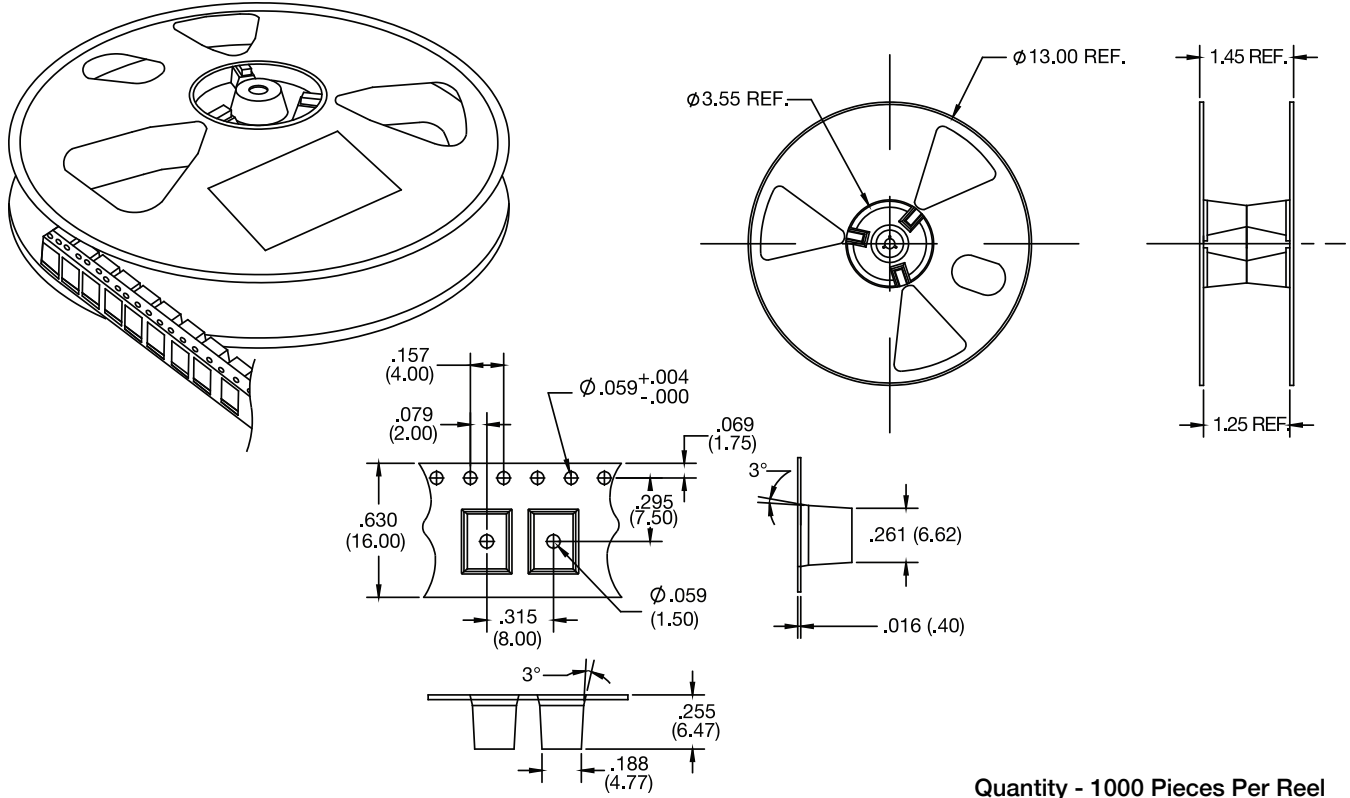
Solder Pad Geometry



Notes:

1. All dimensions are in inches
2. Tolerance is ± 0.005 " unless otherwise noted.

Tape and Reel Specifications



Notes:

1. All dimensions are in inches (mm)

Compliances and Approvals

