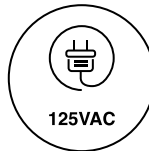
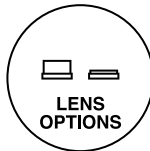




# 36 Series Ø .313" (7.95mm) Neon 125V Panel Mount Indicator



Feature a wide variety of lenses, colors, & bezel variations. Indicators mounts into a .313" (7.95mm) mounting hole with panel thickness of 0.020" min.



## Key Features

- Mounting hole size: .313" (7.95mm)
- Lamp type: neon
- Lens type options: flush and hi-hat
- Lens color options: red, green and amber
- Neon voltage option: 125V
- Housing: white nylon
- Bezel: aluminum
- Lens: polycarbonate
- Two 6" wire leads: #20 AWG, black, bare copper, PVC insulated, UL/CSA rated 105°C, 600V, UL style 1015, stripped 1/2"
- Mounting hardware provided (Speed Nut)
- For black housing, black bezel, or custom cable length contact VCC
- cURus Certified (UL File E20356)
- Compliant with RoHS and REACH

## Ordering Data

### 36 Series (Hi-Hat Lens with Bezel)



Example:  
**36EN-2111**

Part Number	Lens Color	Lens Type	Bezel	Voltage	Watts or Amps	Terminals	Lamp Type	Life (Hrs)
36EN-2111	Red	Hi-Hat	Yes	125V	1/3W	Wire Leads	Neon	25,000

### 36 Series (Flush Lens with No Bezel)



Example:  
**36N-2313**

### 36 Series (Flush Lens with Bezel)

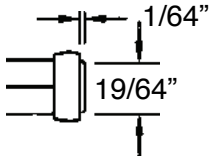


Example:  
**36EN-2312**

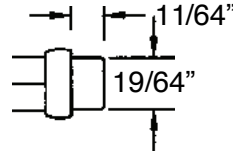
Part Number	Lens Color	Lens Type	Bezel	Voltage	Watts or Amps	Terminals	Lamp Type	Life (Hrs)
36EN-2311	Red	Flush	Yes	125V	1/3W	Wire Leads	Neon	25,000
36EN-2313	Amber	Flush	Yes	125V	1/3W	Wire Leads	Neon	25,000
36EN-2312	Green	Flush	Yes	125V	1/3W	Wire Leads	Neon	25,000
36N-2313	Amber	Flush	No	125V	1/3W	Wire Leads	Neon	25,000

## Product Dimensions

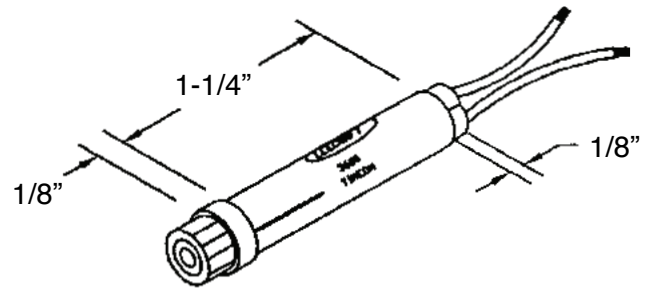
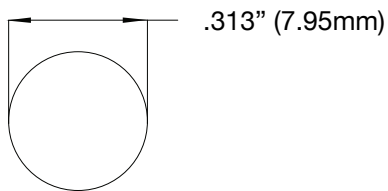
### Flush Lens (with bezel)



### Hi-Hat Lens (with bezel)



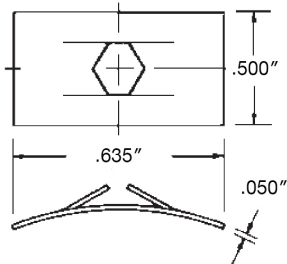
### Recommended Mounting Hole



### Mounting Hardware

Push-on speed nut, which secures the indicator in place, is supplied.

- One piece, self-locking, heat-treated, spring-steel fastener that replaces threaded nuts, lockwashers and spanner washers
- Eliminates time-consuming secondary assembly operations.
- Quick and easy to apply, speed nut provides maximum holding power at minimum cost per fastener.
- It does not shake loose from vibration, yet can be easily loosened when desired, without worry about rust-frozen screw threads
- Smaller components where space is premium
- Requires less torque than standard hex-nuts.



### Notes:

1. All dimensions are in inches
2. The specifications, characteristics and technical data described in the datasheet are subject to change without prior notice.

## Compliances and Approvals

