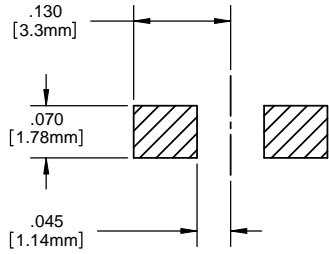


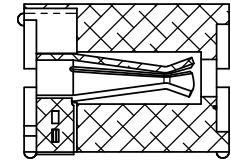
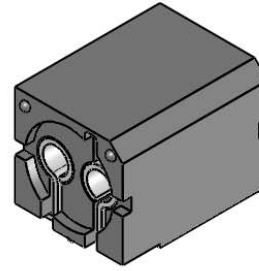
NOTES:

1. MOUNTING: Socket mounts on .250 [6.35mm] centers. Insert component leads thru the mounting pad end of the socket.
2. OPTO: Standard visible, IR LED, or photo detector with leads on .100 [.25mm] centers.
3. LED LEAD DIMENSIONS: Minimum .017 [.43mm] round on square shape. Maximum .030 [.76mm] thickness - .040 [1.02mm] width.
4. MATERIAL: Housing - Nylon 6/6, U.L. 94 V0 Rating, Color black (unless otherwise spec.)  
Contacts - Phosphor bronze, tin sulfamate plated.
5. U.S. & Foreign Pat. Issued & Pend.

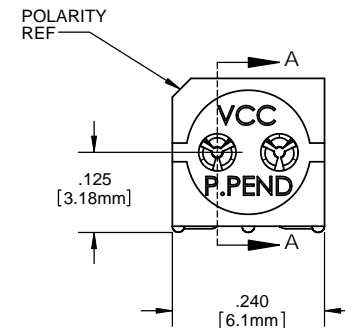
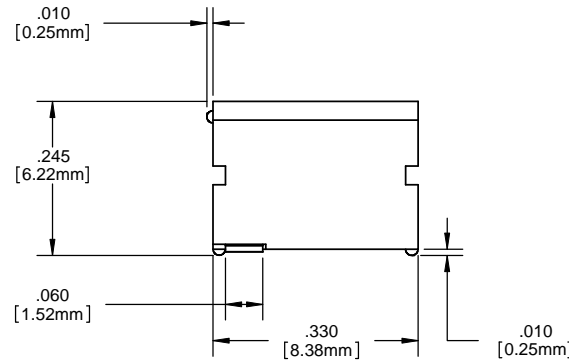
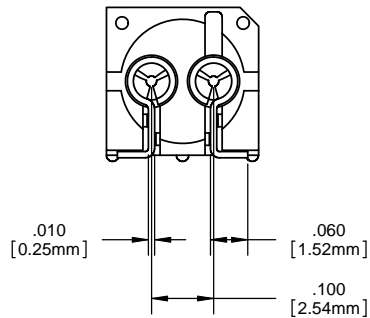
REVISIONS				
ECN#	REV.	DESCRIPTION	DATE	INITIALS
	001	REVISED PER ECR111009AZ01	6-20-10	SMU



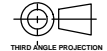
SMD PAD PATTERN



SECTION A-A



ORDERING CODE : SMD 330

<small>UNLESS OTHERWISE SPECIFIED DIMENSIONS ARE IN INCHES</small> <small>ANGLES DECIMALS ±1'</small> <small>FINISH .X ±.020 .XX ±.010 .XXX ±.005</small> <small>BREAK ALL CORNERS AND SHARP EDGES (R1/16")</small>  <small>THIRD ANGLE PROJECTION</small> <small>PROPRIETARY AND CONFIDENTIAL</small> <small>THE INFORMATION CONTAINED IN THIS DRAWING IS THE SOLE PROPERTY OF VISUAL COMMUNICATIONS COMPANY, INC. AND IS REPRODUCED IN PART OR AS A WHOLE WITHOUT THE WRITTEN CONSENT OF VISUAL COMMUNICATIONS COMPANY, INC.</small>	MATERIAL		VISUAL COMMUNICATIONS COMPANY, INC.	
	SEE NOTES		190 Bossick Boulevard, Suite 101 San Marcos, CA 92069 USA Phone (760) 560-1300 Fax (760) 560-1301 email vccsales@vccite.com	
	FINISH		TITLE: P-C-LITE® HORIZONTAL MOUNT	
	APPROVAL	DATE	SIZE	DWG. NO.
DRAWN: SMU	6-20-10	B	SMD 330	001
CHECKED: DZ	6-20-10	SCALE: 5:1		SHEET 1 OF 1
DO NOT SCALE DRAWING				