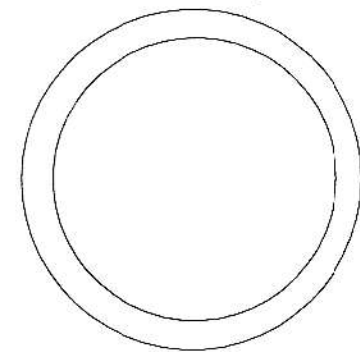
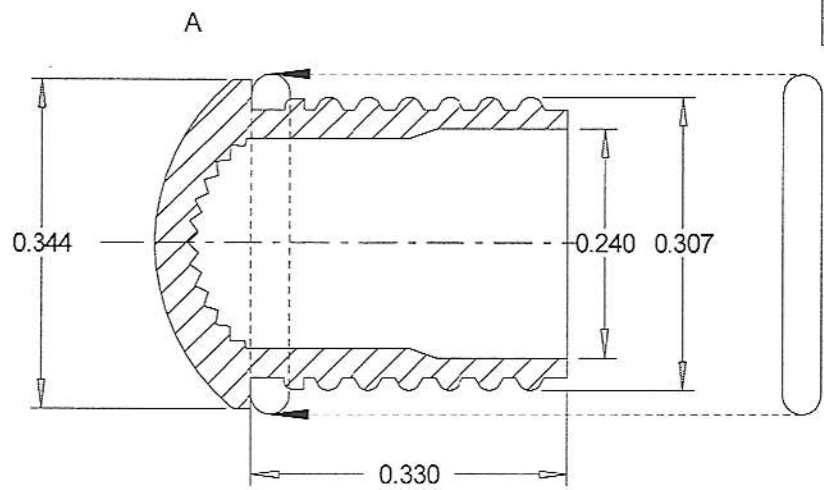
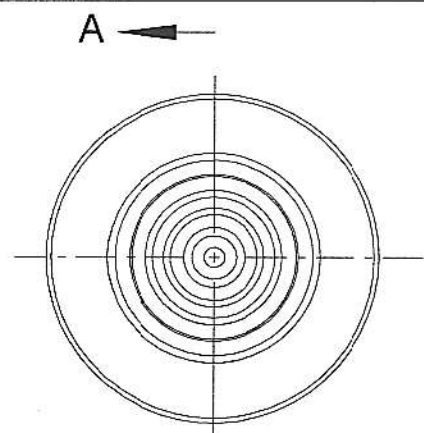
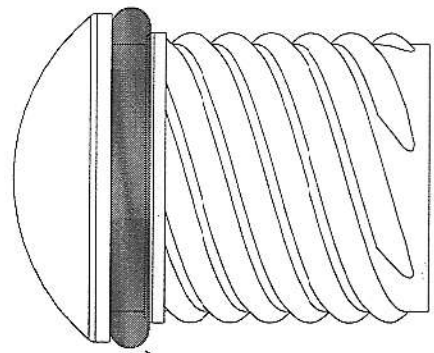


APPROVAL *AS* DATE 09/26/07



A

THREAD PITCH = .250" PER REVOLUTION



CLS 442 BLK SEAL

STANDARD COLORS	Color
XXX = RTP	RED
GTP	GREEN
ATP	AMBER
YTP	YELLOW
CTP	CLEAR
BTP	BLUE

BILL OF MATERIALS

ITEM	P/N	DESCRIPTION	COLOR
A	441 XXX	5mm THREADED LED LENS	XXX
B	CLS442BLK	5mm MOISTURE SEAL GROMMET	BLACK

U.S. & FOREIGN ISSUED AND PEND.

REVISIONS			
NO	DESCRIPTION	DATE	BY
1			
2			
3			
4			
5			
6			

CLIPLITE® 442 XXX 5mm LENS w/ SEAL

VCC VISUAL COMMUNICATIONS COMPANY, INC.
 190 Bosstick Blvd, Ste. 101 San Marcos, California 92069 U.S.A.
 Phone (760) 560-1300 Fax (760) 560-1301 e-mail vccsales@vcclite.com

TOLERANCES	SCALE	N/A	DATE	09/26/07	DRAWING NO.	REV.
DECIMAL ±.004	DIAMETER	.003 TIR	DRAWN BY	SK	442XXX	
ANGLE ±30'	RADII	.008 Max	CHK'D			