



SpaceSetter™ LED Spacer



SpaceSetter™ is a unique spacer to position LEDs
T1 (3 mm) and T1¾ (5 mm)

Applications

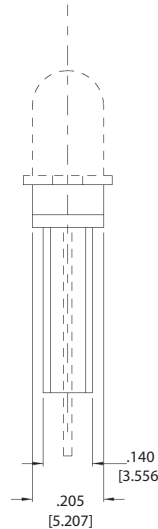
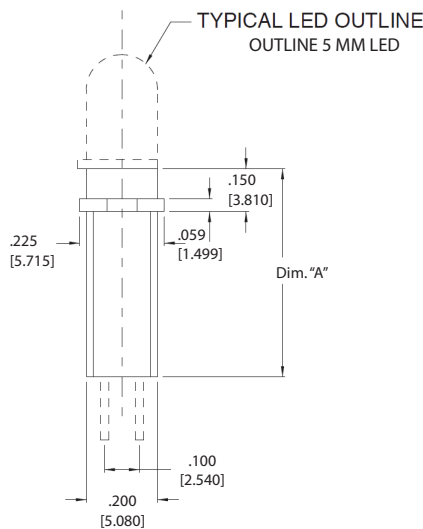
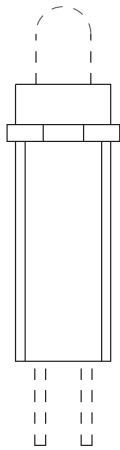
- consumer electronics
- electrical panels
- instrument panels
- PCBs in general

Key features

- height requirement: .200" to 1.000"
- can be customized for other height requirements
- space the LED from the surface of the board
- minimize shifting and height variation
- ensure product uniformity and production ease
- designed to fit standards T1 and T1¾
- color: natural

Dimensions

OUTLINE 3 MM LED



All dimensions in inches [mm]

Product Specifications

Material	Installation Specification
Nylon Zytel	height requirement: .200" to 1.000" ± 0.020"

Ordering data

	Dim. "A"
CM00624200	0.200"
CM00624250	0.250"
CM00624300	0.300"
CM00624375	0.375"

	Dim. "A"
CM00624400	0.400"
CM00624450	0.450"
CM00624455	0.455"
CM00624500	0.500"

	Dim. "A"
CM00624595	0.595"
CM00624606	0.606"
CM00624624	0.624"
CM00624625	0.625"

	Dim. "A"
CM00624750	0.750"
CM00624850	0.850"
CM00624900	0.900"
CM00624001	1.000"

engineered to light up your design

www.vcclite.com

1.800.522.5546